

Slide bar set - Brushed Platinum

ST 050 203 2979



- Slide bar
- Pipe diameter 3/4"
- Center to center 33-5/8"
- Metal shower hose 68-7/8" with anti-twist device
- Shower hose connection 3/8"
- 3-way or 5-way adjustable: COMPACT RAIN, COMPACT SOFT FLOW, COMPACT AQUAPRESSURE FLOW, flow rate max. 1.8 gpm (at 3 bar)
- Function from: 1.6 gpm
- Ø 3-7/8"
- This product can help a building meet the requirements of Green Building Rating Systems, e.g. LEED®, BREEAM®, DGNB

	Brushed Platinum	ST 050 203 2979-06 0010
	Chrome	ST 050 203 2979-00 0010
	Platinum	ST 050 203 2979-08 0010
	Dark Chrome	ST 050 203 2979-19 0010
	Light gold	ST 050 203 2979-26 0010
	Brushed Light Gold	ST 050 203 2979-27 0010
	Brushed Durabrass (23kt Gold)	ST 050 203 2979-28 0010
	Matte Black	ST 050 203 2979-33 0010
	Brushed Bronze	ST 050 203 2979-42 0010
	Brushed Champagne (22kt Gold)	ST 050 203 2979-46 0010
	Champagne (22kt Gold)	ST 050 203 2979-47 0010
	Brushed Chrome	ST 050 203 2979-93 0010
	Brushed Dark Platinum	ST 050 203 2979-99 0010

Individual components of this set

The following components are needed for this set



1x 26 413 979-06



1x 28 018 979-06 0010



Slide bar set - Brushed Platinum

ST 050 203 2979

Slide bar set - Brushed Platinum

ST 050 203 2979



- COMPACT RAIN, flow rate max. l/min (at 3 bar)
- _x000D_
- Center to center 33-5/8"
- Shower hose connection 3/8"
- Metal shower hose 68-7/8" with anti-twist device
- Slide bar
- Pipe diameter 3/4"
- Internal back flow preventer

This article does not include a hand shower!

NOTE: Hand shower sold separately. Please see hand shower options under the miscellaneous articles section of each series.

	Brushed Platinum	26 413 979-06
	Chrome	26 413 979-00
	Platinum	26 413 979-08
	Dark Chrome	26 413 979-19
	Light gold	26 413 979-26
	Brushed Light Gold	26 413 979-27
	Brushed Durabronze (23kt Gold)	26 413 979-28
	Matte Black	26 413 979-33
	Brushed Bronze	26 413 979-42
	Brushed Champagne (22kt Gold)	26 413 979-46
	Champagne (22kt Gold)	26 413 979-47
	Brushed Chrome	26 413 979-93
	Brushed Dark Platinum	26 413 979-99

Recommended article

	Rough-in adapter -	35 080 970-90
	•Please order rough-in adapter 35 080 970-90 0010 if installed with wall elbow.	0010

Recommended article

	LISSÉ Wall elbow - Brushed Platinum	28 450 845-06
--	--	---------------

Required article

	Hand shower FlowReduce - Brushed Platinum	28 012 979-06 0010
--	--	--------------------

Required article

	SERIES-VARIOUS Hand shower FlowReduce - Brushed Platinum	28 029 979-06 0010
--	---	--------------------

Recommended article

	Wall elbow - Brushed Platinum	28 450 980-06
--	--------------------------------------	---------------

Required article

	Hand shower FlowReduce - Brushed Platinum	28 016 979-06 0010
--	--	--------------------

Required article

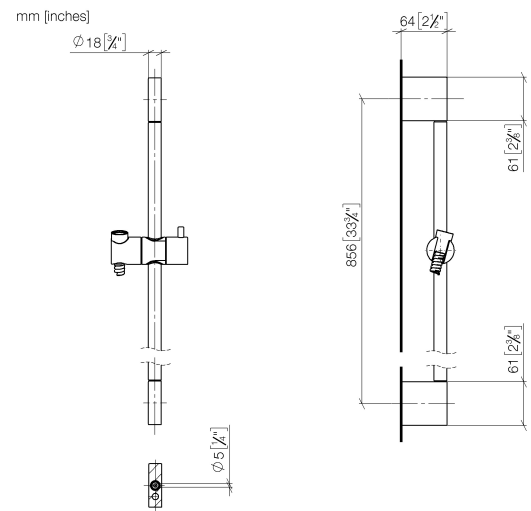
	Hand shower FlowReduce - Brushed Platinum	28 018 979-06 0010
--	--	--------------------

Required article

	SERIES-VARIOUS Hand shower FlowReduce - Brushed Platinum	28 025 979-06 0010
--	---	--------------------

Slide bar set - Brushed Platinum

ST 050 203 2979



Codes & Standards

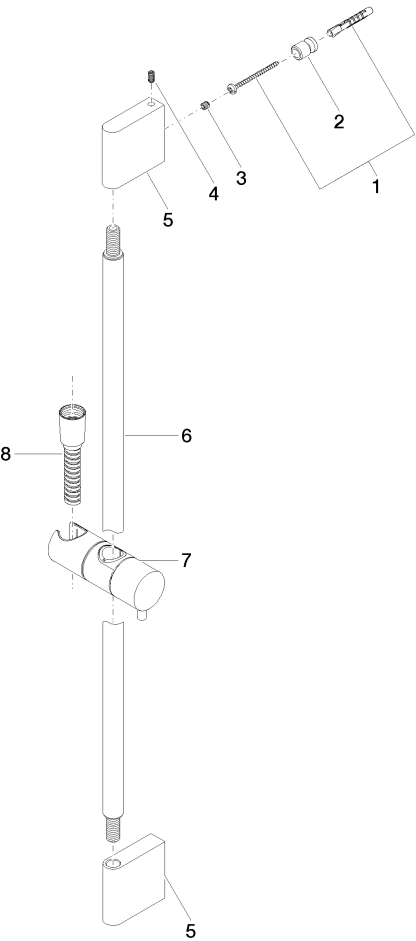
ASME A112.18.1	cUPC	Scottish Water Byelaws	UK Water Supply Regulations
XP P 41-280			

Certificates

WRAS_2009	ACS_20 ACC LY	IAPMO_4976
-----------	---------------	------------

Slide bar set - Brushed Platinum

ST 050 203 2979



Spare parts list

Number	Item Number	Designation	Number of units	Lead time
1	05 17 20 726 02 90	fixing set	2	2
2	08 17 20 726 90	holder	2	2
3	09 31 11 049 90	pin	2	2
4	04 31 11 113 00 90	pin	2	2
5	08 17 97 054-06	holder	2	10
6	90 28 22 597 00-06	holder	1	10
7	12 580 970-06	Slider - Brushed Platinum	1	10
8	28 322 970-06	Metal shower hose 1/2" x 3/8" x 68-7/8" - Brushed Platinum	1	2

Slide bar set - Brushed Platinum

ST 050 203 2979



- 3-way or 5-way adjustable: COMPACT RAIN, COMPACT SOFT FLOW, COMPACT AQUAPRESSURE FLOW, flow rate max. 1.8 gpm (at 3 bar)
- Descaling system
- Ø 3-7/8"
- 1/2" connection
- Function from: 1.6 gpm
- This product reduces water consumption by 28% (compared to requirements of EPAct '92)
- This product contributes to meeting the requirements of the LEED® Green Building Rating
- This product can help a building meet the requirements of Green Building Rating Systems, e.g. LEED®, BREEAM®, DGNB

Internal backflow preventer.

	Brushed Platinum	28 018 979-06 0010
	Chrome	28 018 979-00 0010
	Platinum	28 018 979-08 0010
	Dark Chrome	28 018 979-19 0010
	Light gold	28 018 979-26 0010
	Brushed Light Gold	28 018 979-27 0010
	Brushed Durabronze (23kt Gold)	28 018 979-28 0010
	Matte Black	28 018 979-33 0010
	Brushed Bronze	28 018 979-42 0010
	Brushed Dark Bronze	28 018 979-43 0010
	Brushed Champagne (22kt Gold)	28 018 979-46 0010
	Champagne (22kt Gold)	28 018 979-47 0010
	Brushed Chrome	28 018 979-93 0010
	Brushed Dark Platinum	28 018 979-99 0010



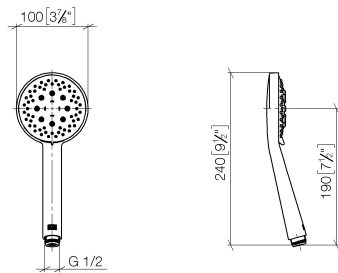
Slide bar set - Brushed Platinum

ST 050 203 2979

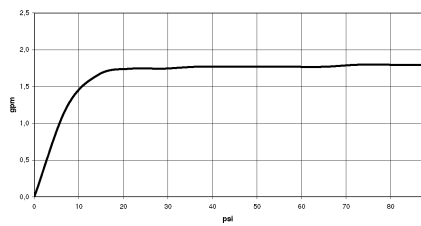
Slide bar set - Brushed Platinum

ST 050 203 2979

mm [inches]



Flow rate chart



Codes & Standards

ASME A112.18.1	California Energy Commission (CEC)	cUPC	DIN 4109
EPA WaterSense	ISO 3822	Ü-Zeichen	WaterSense



Certificates

IAPMO_11777 LGA_29 IAPMO_4976 (



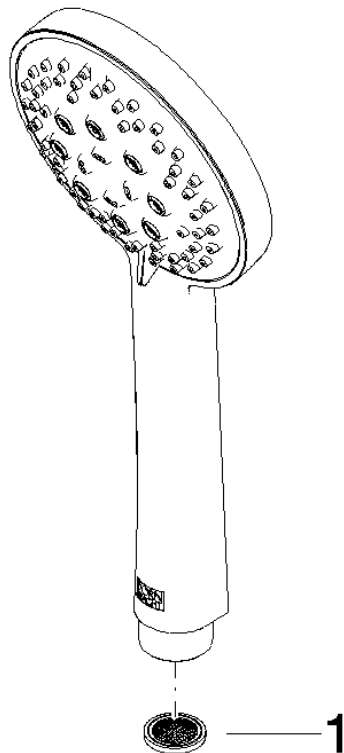
Slide bar set - Brushed Platinum

ST 050 203 2979

Slide bar set - Brushed Platinum

ST 050 203 2979

Parts for other
finishes can be found
here: [Chrome](#)



Spare parts list

Number	Item Number	Designation	Number of units	Lead time
1	09 23 01 039 90	sieve	1	2