

Exposed shower set with shower thermostat - Brushed Champagne (22kt Gold)

ST 050 305 3979



- Projection 17-7/8"
 - Rain shower: PURE RAIN, flow rate max. 1.8 gpm (at 3 bar)
 - Rain shower diameter 8-5/8"
 - Rain shower with descaling system
 - Hand-held shower: COMPACT RAIN, flow rate max. 1.8 gpm (at 3 bar)
 - Ø 3-7/8"
 - Diverter with integrated volume control
 - Flanges Ø 2-3/4"
 - Height from center of faucet to bottom of rainhead 39-3/4"
 - Height from center of faucet to top of shower arm 45-1/4"
 - Center to center 5-7/8" ± 1/2"
 - Metal shower hose 68-7/8" with anti-twist device
 - 1/2" connection
 - Slide bar
 - Pipe diameter 7/8"
 - This product can help a building meet the requirements of Green Building Rating Systems, e.g. LEED®, BREEAM®, DGNB
- Internal backflow preventer.**

NOTE: Hand shower sold separately. For more hand shower options, please see the miscellaneous articles section of each series.

	Brushed Champagne (22kt Gold)	ST 050 305 3979-46 0010
	Chrome	ST 050 305 3979-00 0010
	Brushed Platinum	ST 050 305 3979-06 0010
	Platinum	ST 050 305 3979-08 0010
	Dark Chrome	ST 050 305 3979-19 0010
	Light gold	ST 050 305 3979-26 0010
	Brushed Light Gold	ST 050 305 3979-27 0010
	Brushed Durabronze (23kt Gold)	ST 050 305 3979-28 0010
	Matte Black	ST 050 305 3979-33 0010
	Brushed Dark Brass	ST 050 305 3979-39 0010
	Brushed Bronze	ST 050 305 3979-42 0010
	Champagne (22kt Gold)	ST 050 305 3979-47 0010
	Brushed Chrome	ST 050 305 3979-93 0010
	Brushed Dark Platinum	ST 050 305 3979-99 0010

Individual components of this set

The following components are needed for this set



1x 34 459 979-46 0010



1x 28 025 979-46 0010



Exposed shower set with shower thermostat - Brushed Champagne (22kt Gold)

ST 050 305 3979

Exposed shower set with shower thermostat - Brushed Champagne (22kt Gold)

ST 050 305 3979



- Projection 17-7/8"
 - Rainshower
 - Rain shower with descaling system
 - Rain shower diameter 8-5/8"
 - Rain shower water flow rate limited to max. 1.8 gpm (at 3 bar)
 - Diverter with integrated volume control
 - Height from center of faucet to top of shower arm 45-1/4"
 - Flanges Ø 2-3/4"
 - Height from center of faucet to bottom of rainhead 39-3/4"
 - Center to center 5-7/8" ± 1/2"
 - Metal shower hose 68-7/8" with anti-twist device
 - 1/2" connection
 - Slide bar
 - Pipe diameter 7/8"
 - with drip prevention
 - This product reduces water consumption by 28% (compared to requirements of EPA Act '92)
 - This product contributes to meeting the requirements of the LEED® Green Building Rating
- Internal backflow preventer.**

NOTE: Hand shower sold separately. Please see hand shower options under the miscellaneous articles section of each series.

Internal backflow preventer.

NOTE: Hand shower sold separately. Please see hand shower options under the miscellaneous articles section of each series.

	Brushed Champagne (22kt Gold)	34 459 979-46 0010
	Chrome	34 459 979-00 0010
	Brushed Platinum	34 459 979-06 0010
	Platinum	34 459 979-08 0010
	Dark Chrome	34 459 979-19 0010
	Light gold	34 459 979-26 0010
	Brushed Light Gold	34 459 979-27 0010
	Brushed Durabronze (23kt Gold)	34 459 979-28 0010
	Matte Black	34 459 979-33 0010
	Brushed Bronze	34 459 979-42 0010
	Champagne (22kt Gold)	34 459 979-47 0010
	Brushed Chrome	34 459 979-93 0010
	Brushed Dark Platinum	34 459 979-99 0010

Required article

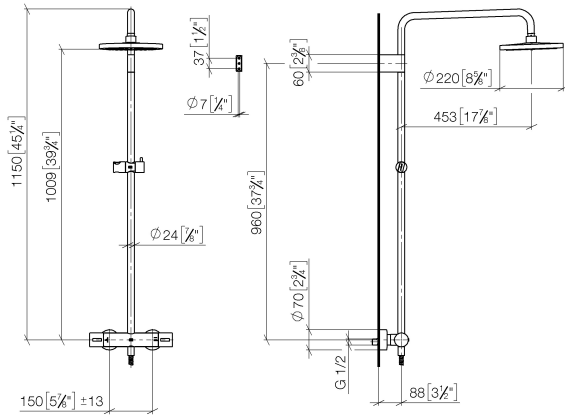


- Rough-in adapter -** 35 080 970-90
 •Please order 2 adapters 0010

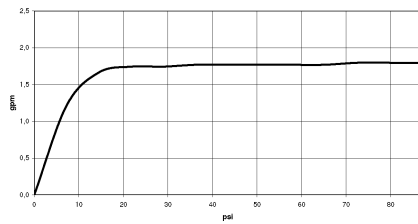
Exposed shower set with shower thermostat - Brushed Champagne (22kt Gold)

ST 050 305 3979

mm [inches]
1:10



Flow rate chart

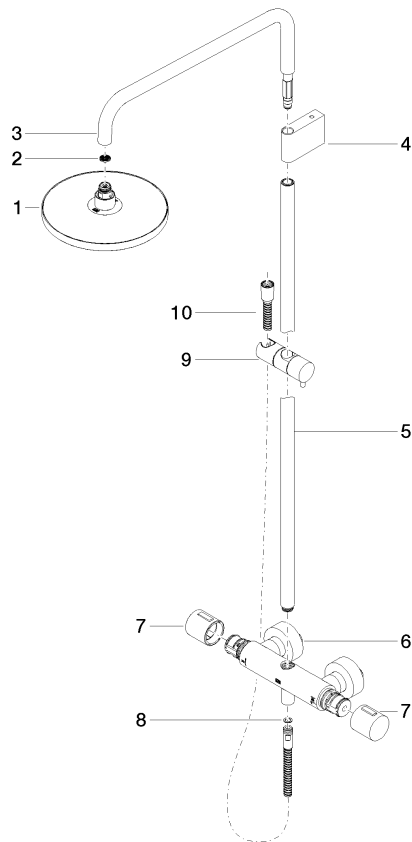


Codes & Standards

ASME	California Energy
A112.18.1/CSA	Commission
B125.1	(CEC)

Exposed shower set with shower thermostat - Brushed Champagne (22kt Gold)

ST 050 305 3979



Spare parts list

Number	Item Number	Designation	Number of units	Lead time
1	04 12 05 092 10-46	shower	1	60
2	09 23 01 039 90	sieve	1	2
3	90 28 22 348 00-46	pipe	1	30
4	90 17 11 150 00-46	holder	1	30
5	90 28 22 349 00-46	pipe	1	30
6	04 17 01 250 00-46	connection	1	60
7	90 17 33 015 00-46	handle	2	30
8	90 14 20 026 00 90	seal	1	2
9	12 570 970-46	Slider - Brushed Champagne (22kt Gold)	1	30
10	28 322 970-46	Metal shower hose 1/2" x 3/8" x 68-7/8" - Brushed Champagne (22kt Gold)	1	30

Exposed shower set with shower thermostat - Brushed Champagne (22kt Gold)

ST 050 305 3979



- Ø 3-7/8"
- COMPACT RAIN, flow rate max. 1.3 gpm (at 3 bar)
- Descaling system
- 1/2" connection
- This product reduces water consumption by 28% (compared to requirements of EPAct '92)
- This product contributes to meeting the requirements of the LEED® Green Building Rating
- This product can help a building meet the requirements of Green Building Rating Systems, e.g. LEED®, BREEAM®, DGNB

Internal backflow preventer.

	Brushed Champagne (22kt Gold)	28 025 979-46 0010
	Chrome	28 025 979-00 0010
	Brushed Platinum	28 025 979-06 0010
	Platinum	28 025 979-08 0010
	Dark Chrome	28 025 979-19 0010
	Light gold	28 025 979-26 0010
	Brushed Durabrass (23kt Gold)	28 025 979-28 0010
	Matte Black	28 025 979-33 0010
	Champagne (22kt Gold)	28 025 979-47 0010
	Brushed Chrome	28 025 979-93 0010
	Brushed Dark Platinum	28 025 979-99 0010



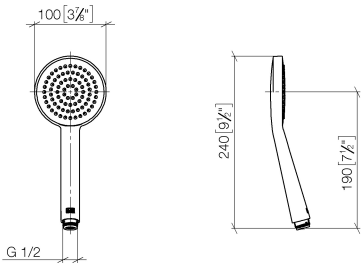
Exposed shower set with shower thermostat - Brushed Champagne (22kt Gold)

ST 050 305 3979

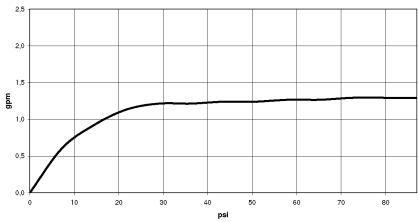
Exposed shower set with shower thermostat - Brushed Champagne (22kt Gold)

ST 050 305 3979

mm [inches]



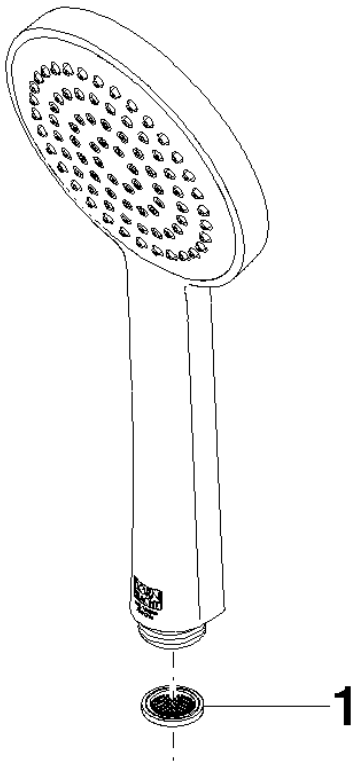
Flow rate chart



Exposed shower set with shower thermostat - Brushed Champagne (22kt Gold)

ST 050 305 3979

Parts for other
finishes can be found
here: [Chrome](#)



Spare parts list

Number	Item Number	Designation	Number of units	Lead time
1	09 23 01 039 90	sieve	1	2