







IMO thermostat with two volume controls - Brushed Platinum

ST 060 101 1671



- Cover plate Ø 4-3/4"
- Flange diameter 2-3/8"
- Temperature control handle with safety lock at 100 °F/ 38°C
- Thermostat cartridge
- 2x Ceramic disc cartridge

	Brushed Platinum	ST 060 101 1671-06
	Chrome	ST 060 101 1671-00
	Dark Chrome	ST 060 101 1671-19
	Matte Black	ST 060 101 1671-33
	Brushed Chrome	ST 060 101 1671-93
	Brushed Dark Platinum	ST 060 101 1671-99

Individual components of this set

The following components are needed for this set

2x 36 310 671-06



1x 36 416 780-06

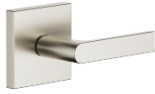


IMO thermostat with two volume controls - Brushed Platinum

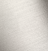






ST 060 101 1671

IMO thermostat with two volume controls - Brushed Platinum

ST 060 101 1671



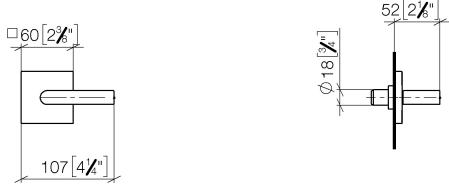
- Flange diameter 2-3/8"
- Ceramic disc cartridge

	Brushed Platinum	36 310 671-06
	Chrome	36 310 671-00
	Dark Chrome	36 310 671-19
	Brushed Light Gold	36 310 671-27
	Matte Black	36 310 671-33
	Brushed Chrome	36 310 671-93
	Brushed Dark Platinum	36 310 671-99

IMO thermostat with two volume controls - Brushed Platinum

ST 060 101 1671

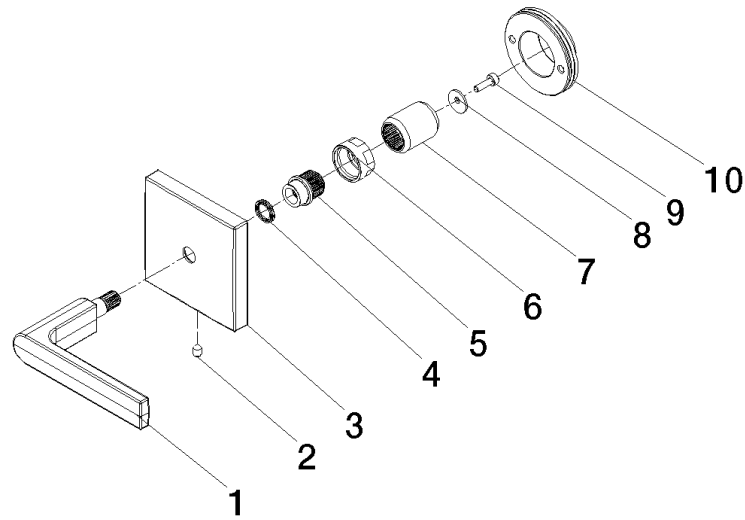
mm [inches]



IMO thermostat with two volume controls - Brushed Platinum

ST 060 101 1671

Parts for other
finishes can be found
here: [Chrome](#)



Spare parts list

Number	Item Number	Designation	Number of units	Lead time
1	90 20 67 024 00-06	handle	1	-
Spare part can no longer be ordered, please order the replacement item				
2	90 31 11 007 00 90	pin	1	2
3	09 27 78 033-06	rosette	1	10
4	09 14 03 187 90	seal	1	2
5	09 12 12 057 90	fixing cap	1	2
6	09 23 30 074 90	nut	1	2
7	09 12 12 059 90	sleeve	1	2
8	09 30 11 193 90	disc	1	2
9	09 30 30 167 90	screw	1	2
10	90 21 02 108 00 90	disc	1	2

IMO thermostat with two volume controls - Brushed Platinum

ST 060 101 1671



- Cover plate 4-3/4" x 4-3/4"
- Temperature control handle with safety lock at 100 °F/ 38°C

NOTE: Important! Due to minimum rough-in requirements, a framing of 2 x 6 studs may be needed.

NOTE: Important! Due to minimum rough-in requirements, a framing of 2 x 6 studs may be needed.

	Brushed Platinum	36 416 780-06
	Chrome	36 416 780-00
	Platinum	36 416 780-08
	Dark Chrome	36 416 780-19
	Brushed Durabronz (23kt Gold)	36 416 780-28
	Matte Black	36 416 780-33
	Brushed Champagne (22kt Gold)	36 416 780-46
	Champagne (22kt Gold)	36 416 780-47
	Cyprus	36 416 780-49
	Brushed Chrome	36 416 780-93
	Brushed Dark Platinum	36 416 780-99

Required article



xTOOL Concealed thermostat rough -

35 517 970-90
0010

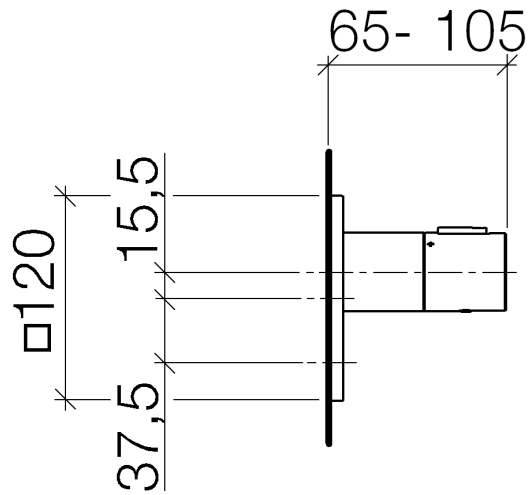
- Min. rough in depth "
- Max. rough in depth "

IMO thermostat with two volume controls - Brushed Platinum

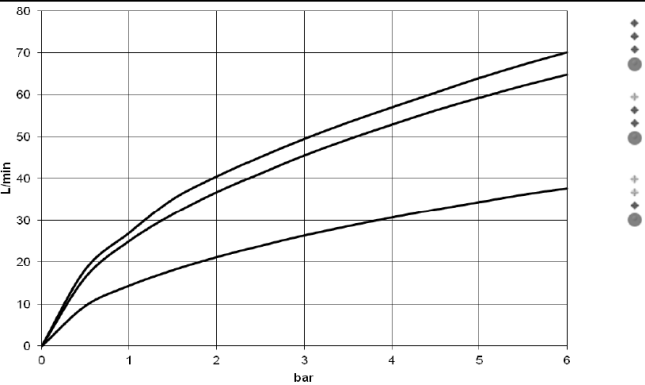
ST 060 101 1671

IMO thermostat with two volume controls - Brushed Platinum

ST 060 101 1671



Flow rate chart



Codes & Standards

ASME A112.18.1 cUPC

Certificates

IAPMO_4976 (

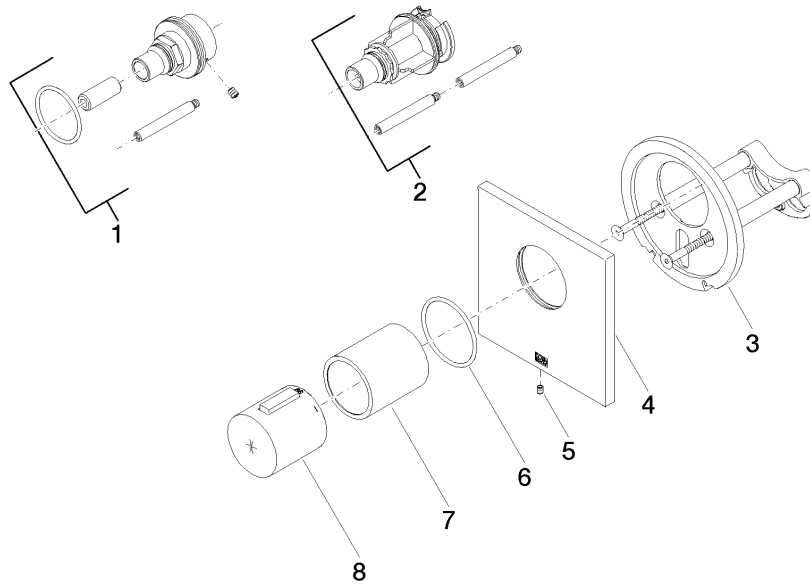


IMO thermostat with two volume controls - Brushed Platinum

ST 060 101 1671

IMO thermostat with two volume controls - Brushed Platinum

ST 060 101 1671



Spare parts list

Number	Item Number	Designation	Number of units	Lead time
1	12 177 970 90	Extension 1-1/8" -	1	2
2	12 178 970 90	Extension 1-3/4" -	1	2
3	90 11 01 196 00 90	base	1	2
4	90 11 02 533 00-06	cover	1	10
5	09 31 11 044 90	pin	1	2
6	90 14 10 049 00 90	seal	1	2
7	90 21 02 112 00-06	sleeve	1	10
8	90 17 33 020 00-06	handle	1	10