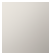
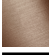



MADISON xTOOL thermostat with two volume controls - Brushed Durabross (23kt Gold)

ST 060 105 8360



- Cover plate Ø 4-7/8"
- Flange diameter 2-1/8"
- Temperature control handle with safety lock at 100 °F/ 38°C

	Brushed Durabross (23kt Gold)	ST 060 105 8360-28
	Chrome	ST 060 105 8360-00
	Brushed Platinum	ST 060 105 8360-06
	Platinum	ST 060 105 8360-08
	Durabross (23kt Gold)	ST 060 105 8360-09
	Brushed Dark Brass	ST 060 105 8360-39
	Brushed Bronze	ST 060 105 8360-42
	Brushed Dark Platinum	ST 060 105 8360-99

Individual components of this set

The following components are needed for this set

1x 36 416 977-08





MADISON xTOOL thermostat with two volume controls - Brushed Durabrass (23kt Gold)

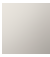





ST 060 105 8360

MADISON xTOOL thermostat with two volume controls - Brushed Durabross (23kt Gold)

ST 060 105 8360



- Cover plate Ø 4-7/8"
- Temperature control handle with safety lock at 100 °F/ 38°C

	Platinum	36 416 977-08
	Chrome	36 416 977-00
	Brushed Platinum	36 416 977-06
	Durabross (23kt Gold)	36 416 977-09
	Brushed Durabross (23kt Gold)	36 416 977-28
	Brushed Dark Platinum	36 416 977-99

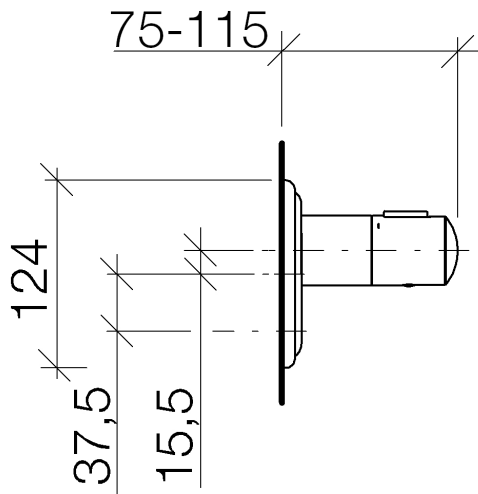
Required article



xTOOL Concealed thermostat rough -	35 517 970-90
•Min. rough in depth "	0010
•Max. rough in depth "	

MADISON xTOOL thermostat with two volume controls - Brushed Durabross
(23kt Gold)

ST 060 105 8360



Codes & Standards

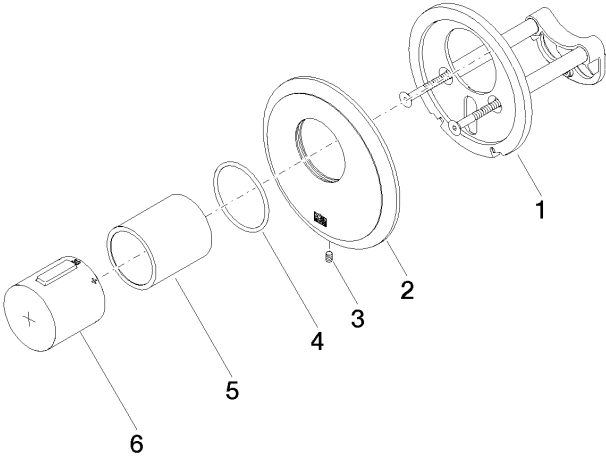
ASME A112.18.1 cUPC

Certificates

IAPMO_4976 (

MADISON xTOOL thermostat with two volume controls - Brushed Durabross
(23kt Gold)

ST 060 105 8360



Spare parts list

Number	Item Number	Designation	Number of units	Lead time
1	90 11 01 196 00 90	base	1	2
2	09 11 02 543-08	cover	1	40
3	09 31 11 048 90	pin	1	2
4	90 14 10 049 00 90	seal	1	2
5	90 21 02 112 00-08	sleeve	1	40
6	90 17 33 017 00-08	handle	1	40