

TARA Shower thermostat - Brushed Champagne (22kt Gold)

ST 060 113 5892



- 3/8" Shower outlet
- Flanges Ø 2-3/4"
- 1/2" connection
- Center to center 5-7/8" ± 1/2"
- with volume control

	Brushed Champagne (22kt Gold)	ST 060 113 5892-46
	Chrome	ST 060 113 5892-00
	Brushed Platinum	ST 060 113 5892-06
	Platinum	ST 060 113 5892-08
	Dark Chrome	ST 060 113 5892-19
	Brushed Durabronze (23kt Gold)	ST 060 113 5892-28
	Matte Black	ST 060 113 5892-33
	Brushed Bronze	ST 060 113 5892-42
	Champagne (22kt Gold)	ST 060 113 5892-47
	Brushed Chrome	ST 060 113 5892-93
	Brushed Dark Platinum	ST 060 113 5892-99

Individual components of this set

The following components are needed for this set

1x 11 431 892-46



1x 34 443 979-46





TARA Shower thermostat - Brushed Champagne (22kt Gold)

ST 060 113 5892

TARA Shower thermostat - Brushed Champagne (22kt Gold)

ST 060 113 5892



	Brushed Champagne (22kt Gold)	11 431 892-46
	Chrome	11 431 892-00
	Brushed Platinum	11 431 892-06
	Platinum	11 431 892-08
	Dark Chrome	11 431 892-19
	Brushed Durabronze (23kt Gold)	11 431 892-28
	Matte Black	11 431 892-33
	Brushed Bronze	11 431 892-42
	Champagne (22kt Gold)	11 431 892-47
	Brushed Chrome	11 431 892-93
	Brushed Dark Platinum	11 431 892-99



TARA Shower thermostat - Brushed Champagne (22kt Gold)

ST 060 113 5892



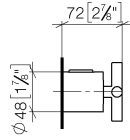
TARA Shower thermostat - Brushed Champagne (22kt Gold)

ST 060 113 5892

TARA Shower thermostat - Brushed Champagne (22kt Gold)

ST 060 113 5892

mm [inches]





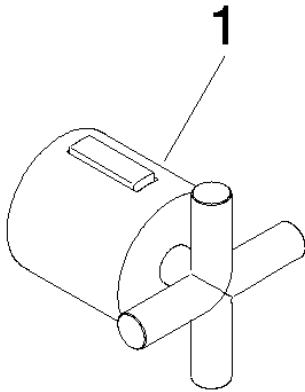
TARA Shower thermostat - Brushed Champagne (22kt Gold)

ST 060 113 5892

TARA Shower thermostat - Brushed Champagne (22kt Gold)

ST 060 113 5892

Parts for other
finishes can be found
here: [Chrome](#)



- 3/8" Shower outlet
- Flanges Ø 2-3/4"
- 1/2" connection
- Center to center 5-7/8" ± 1/2"
- with volume control

Internal backflow preventer.

Can be combined with hand shower sets and slide bar sets.

	Brushed Champagne (22kt Gold)	34 443 979-46
	Chrome	34 443 979-00
	Brushed Platinum	34 443 979-06
	Platinum	34 443 979-08
	Dark Chrome	34 443 979-19
	Brushed Durabrass (23kt Gold)	34 443 979-28
	Matte Black	34 443 979-33
	Champagne (22kt Gold)	34 443 979-47
	Brushed Chrome	34 443 979-93
	Brushed Dark Platinum	34 443 979-99



TARA Shower thermostat - Brushed Champagne (22kt Gold)

ST 060 113 5892



TARA Shower thermostat - Brushed Champagne (22kt Gold)

ST 060 113 5892



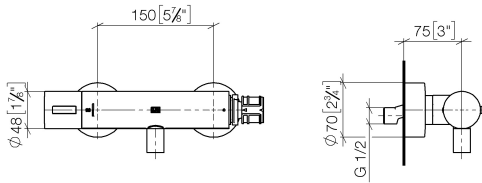
TARA Shower thermostat - Brushed Champagne (22kt Gold)

ST 060 113 5892

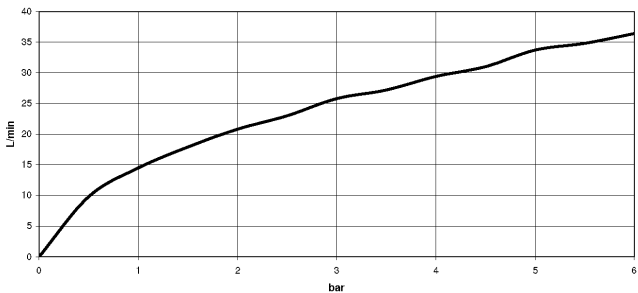
TARA Shower thermostat - Brushed Champagne (22kt Gold)

ST 060 113 5892

mm [inches]



Flow rate chart



Codes & Standards

DIN 4109	EN 1717	ISO 3822	Scottish Water Byelaws
UK Water Supply Regulations	Ü-Zeichen		

Certificates

Belgaqua_22_281_2 LGA_29 WRAS_2204



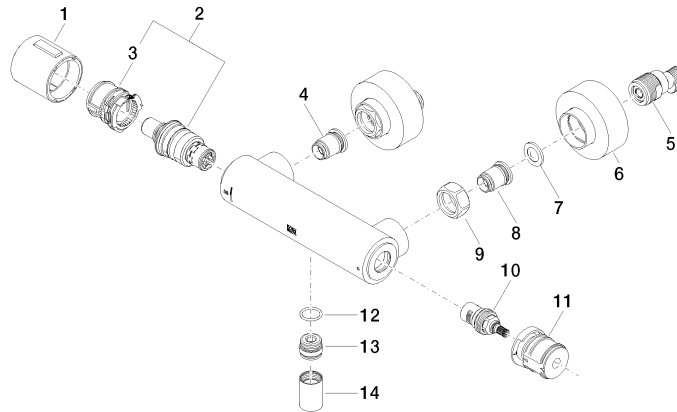
TARA Shower thermostat - Brushed Champagne (22kt Gold)

ST 060 113 5892

TARA Shower thermostat - Brushed Champagne (22kt Gold)

ST 060 113 5892

Parts for other
finishes can be found
here: [Chrome](#)



Spare parts list

Number	Item Number	Designation	Number of units	Lead time
1	90 17 33 015 00-46	handle	1	30
2	90 15 02 070 00 90	cartridge	1	2
3	90 30 40 010 00 90	regulator	1	2
4	04 31 20 530 00 90	insert	1	2
5	04 11 04 030 00 90	connection	2	2
6	90 31 20 512 00-46	rosette	2	30
7	09 29 30 050 90	sieve	2	2
8	04 31 20 540 00 90	insert	1	2
9	09 24 77 008-00	nut	2	10
10	90 90 03 236 00 90	top	1	2
11	90 30 40 017 00 90	base	1	2
12	90 14 10 010 00 90	seal	1	2
13	09 31 20 511-46	nipple	1	60
14	90 21 02 069 00-46	cover	1	30