

# VAIA Single-lever mixer with side spray set - Brushed Bronze

ST 110 105 1809



- 8" Projection
- Swiveling spout 360°
- Aerated stream and spray mode
- Integrated diverter
- Total height 12-3/8"
- Height to aerator/spout outlet 8-1/2"
- Single-lever mixer hole diameter 1-3/8"
- Side spray hole diameter 1-1/4"
- 2 x pressure hose with 3/8" compression fitting
- Fabric braided spray hose 59"
- Sprayface with descaling system
- Water flow rate limited to max. 1.5 gpm
- lead-free
- This product can help a building meet the requirements of Green Building Rating Systems, e.g. LEED®, BREEAM®, DGNB

	Brushed Bronze	ST 110 105 1809-42 0010
	Chrome	ST 110 105 1809-00 0010
	Brushed Platinum	ST 110 105 1809-06 0010
	Platinum	ST 110 105 1809-08 0010
	Durabronze (23kt Gold)	ST 110 105 1809-09 0010
	Dark Chrome	ST 110 105 1809-19 0010
	Brushed Durabronze (23kt Gold)	ST 110 105 1809-28 0010
	Matte Black	ST 110 105 1809-33 0010
	Brushed Champagne (22kt Gold)	ST 110 105 1809-46 0010
	Champagne (22kt Gold)	ST 110 105 1809-47 0010
	Brushed Chrome	ST 110 105 1809-93 0010
	Brushed Dark Platinum	ST 110 105 1809-99 0010

## Individual components of this set

The following components are needed for this set



1x 27 718 809-42



1x 33 810 809-42 0010



## VAIA Single-lever mixer with side spray set - Brushed Bronze

---

ST 110 105 1809

## VAIA Single-lever mixer with side spray set - Brushed Bronze

ST 110 105 1809



- With round flange
- Spray mode
- Integrated diverter
- Total height 6-3/4"
- Side spray hole diameter 1-1/4"
- Fabric braided spray hose 59"
- Sprayface with descaling system
- lead-free
- This product can help a building meet the requirements of Green Building Rating Systems, e.g. LEED®, BREEAM®, DGNB

(ADA)

Can only be combined with 33810809, 33826809, 19815809, 19825809.

Internal backflow preventer.

Residual water may drip from the sprayer after shut-off

Flexible positioning of components.

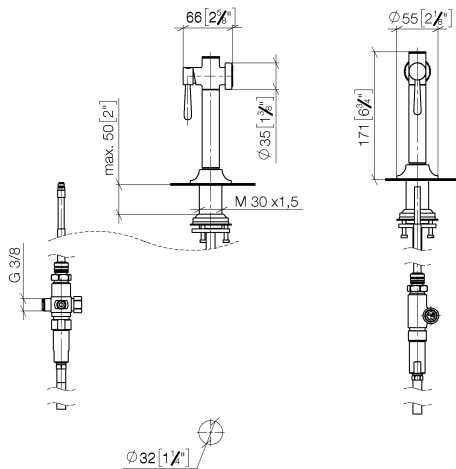
Button has to be pressed while using.

	Brushed Bronze	27 718 809-42
	Chrome	27 718 809-00
	Brushed Platinum	27 718 809-06
	Platinum	27 718 809-08
	Durabronze (23kt Gold)	27 718 809-09
	Dark Chrome	27 718 809-19
	Brushed Durabronze (23kt Gold)	27 718 809-28
	Matte Black	27 718 809-33
	Brushed Champagne (22kt Gold)	27 718 809-46
	Champagne (22kt Gold)	27 718 809-47
	Brushed Chrome	27 718 809-93
	Brushed Dark Platinum	27 718 809-99

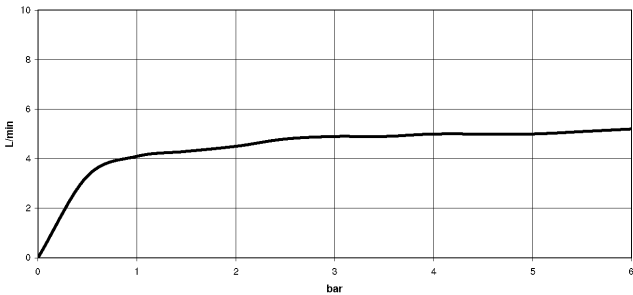
VAIA Single-lever mixer with side spray set - Brushed Bronze

ST 110 105 1809

mm [inches]



Flow rate chart



Codes & Standards

DIN 4109      ISO 3822      NSF372      NSF61

Ü-Zeichen

Certificates

LGA\_38      IAPMO\_N-4976      IAPMO\_6397



## VAIA Single-lever mixer with side spray set - Brushed Bronze

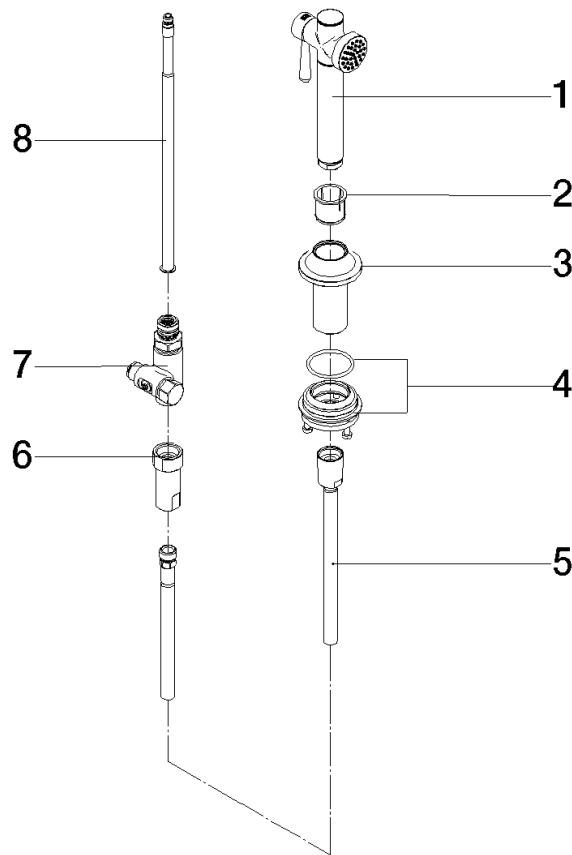
---

ST 110 105 1809

# VAIA Single-lever mixer with side spray set - Brushed Bronze

ST 110 105 1809

Parts for other  
finishes can be found  
here: [Chrome](#)



## Spare parts list

Number	Item Number	Designation	Number of units	Lead time
1	90 12 11 096 12-42	shower	1	30
2	90 18 40 085 00 90	sleeve	1	2
3	90 30 01 142 00-42	shaft	1	30
4	04 23 10 047 00 92	fixing set	1	60
5	90 30 02 062 00-42	hose	1	30
6	90 24 03 241 00 90	nipple	1	2
7	90 17 09 046 12 90	diverter	1	2
8	90 28 20 068 00 90	connection	1	2

## VAIA Single-lever mixer with side spray set - Brushed Bronze

---

ST 110 105 1809





## VAIA Single-lever mixer with side spray set - Brushed Bronze

---

ST 110 105 1809





## VAIA Single-lever mixer with side spray set - Brushed Bronze

---

ST 110 105 1809



## VAIA Single-lever mixer with side spray set - Brushed Bronze

---

ST 110 105 1809

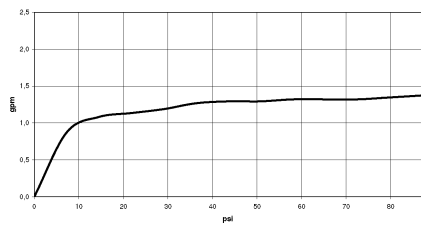
VAIA Single-lever mixer with side spray set - Brushed Bronze

---

ST 110 105 1809

Flow rate chart

---



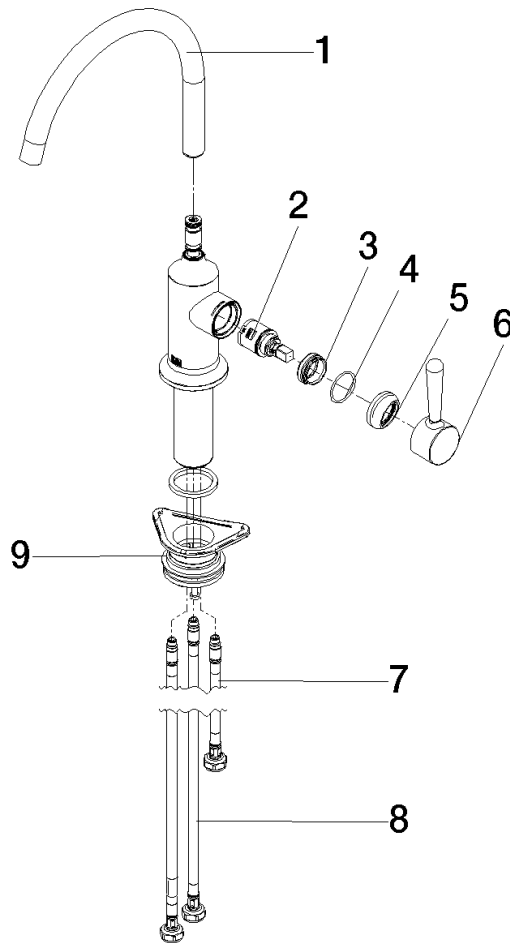
Certificates

---

IAPMO\_N-4976      IAPMO\_6397      IAPMO\_4976 (

# VAIA Single-lever mixer with side spray set - Brushed Bronze

ST 110 105 1809



## Spare parts list

Number	Item Number	Designation	Number of units	Lead time
1	90 28 22 313 00-42	spout	1	30
2	90 15 05 042 00 90	cartridge	1	2
3	09 24 04 266 90	nut	1	2
4	09 14 10 091 90	seal	1	2
5	90 28 30 052 00-42	cover	1	30
6	90 20 80 050 00-42	handle	1	30
7	04 30 04 100 00 90	hose	1	2
8	04 30 04 103 00 90	hose	2	2
9	04 23 10 044 08 90	fixing set	1	2