

META SQUARE Two-hole mixer with individual flanges with side spray set - Chrome

ST 110 109 7861



- 9-1/4" Projection
- Swiveling spout 360°
- Optional restricted swivel available with swivel limiter set 12 820 970 90
- Aerated stream and spray mode
- Integrated diverter
- Total height 13-1/4"
- Height to aerator/spout outlet 10-3/8"
- Individual flanges 2-3/8" x 2-3/8"
- Spout hole diameter 1-3/8"
- Single-lever mixer hole diameter 1-3/8"
- Side spray hole diameter 1-1/4"
- 2 x pressure hose with 3/8" compression fitting
- Fabric braided spray hose 59"
- Sprayface with descaling system
- Water flow rate limited to max. 1.5 gpm
- lead-free
- This product can help a building meet the requirements of Green Building Rating Systems, e.g. LEED®, BREEAM®, DGNB

	Chrome	ST 110 109 7861-00 0010
	Brushed Platinum	ST 110 109 7861-06 0010
	Platinum	ST 110 109 7861-08 0010
	Durabrand (23kt Gold)	ST 110 109 7861-09 0010
	Dark Chrome	ST 110 109 7861-19 0010
	Brushed Durabrand (23kt Gold)	ST 110 109 7861-28 0010
	Matte Black	ST 110 109 7861-33 0010
	Brushed Bronze	ST 110 109 7861-42 0010
	Brushed Champagne (22kt Gold)	ST 110 109 7861-46 0010
	Champagne (22kt Gold)	ST 110 109 7861-47 0010
	Brushed Chrome	ST 110 109 7861-93 0010
	Brushed Dark Platinum	ST 110 109 7861-99 0010

Individual components of this set

The following components are needed for this set



1x 32 815 861-00 0010



1x 27 731 970-00



META SQUARE Two-hole mixer with individual flanges with side spray set - Chrome

ST 110 109 7861

META SQUARE Two-hole mixer with individual flanges with side spray set - Chrome

ST 110 109 7861



- 9-1/4" Projection
- Swiveling spout 360°
- Optional restricted swivel available with swivel limiter set 12 820 970 90
- Aerated stream
- Total height 13-1/4"
- Height to aerator/spout outlet 10-3/8"
- Individual flanges 2-3/8" x 2-3/8"
- Spout hole diameter 1-3/8"
- Single-lever mixer hole diameter 1-3/8"
- 2 x pressure hose with 3/8" compression fitting
- Water flow rate limited to max. 1.5 gpm
- lead-free
- This product can help a building meet the requirements of Green Building Rating Systems, e.g. LEED®, BREEAM®, DGNB

(ADA)

Flexible positioning of components.

	Chrome	32 815 861-00 0010
	Brushed Platinum	32 815 861-06 0010
	Platinum	32 815 861-08 0010
	Durabronze (23kt Gold)	32 815 861-09 0010
	Dark Chrome	32 815 861-19 0010
	Brushed Durabronze (23kt Gold)	32 815 861-28 0010
	Matte Black	32 815 861-33 0010
	Brushed Bronze	32 815 861-42 0010
	Brushed Champagne (22kt Gold)	32 815 861-46 0010
	Champagne (22kt Gold)	32 815 861-47 0010
	Brushed Chrome	32 815 861-93 0010
	Brushed Dark Platinum	32 815 861-99 0010

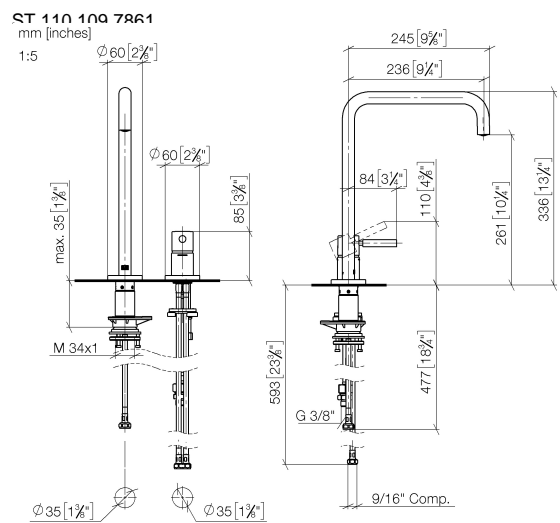
Recommended article

AIR SWITCH operating button, trim parts only - Chrome 10 713 970-00

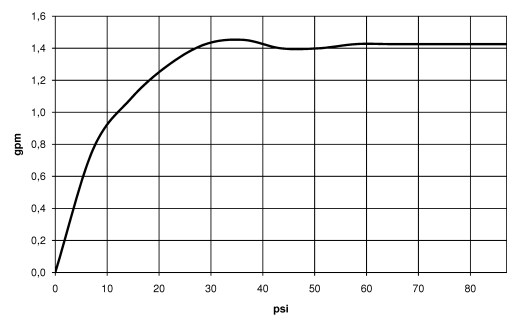




META SQUARE Two-hole mixer with individual flanges with side spray set - Chrome



Flow rate chart



Codes & Standards

ASME A112.18.1	California Energy Commission (CEC)	cUPC	NSF372
NSF61			

Certificates

IAPMO_6397	IAPMO_N-4976	IAPMO_4976 (
------------	--------------	--------------

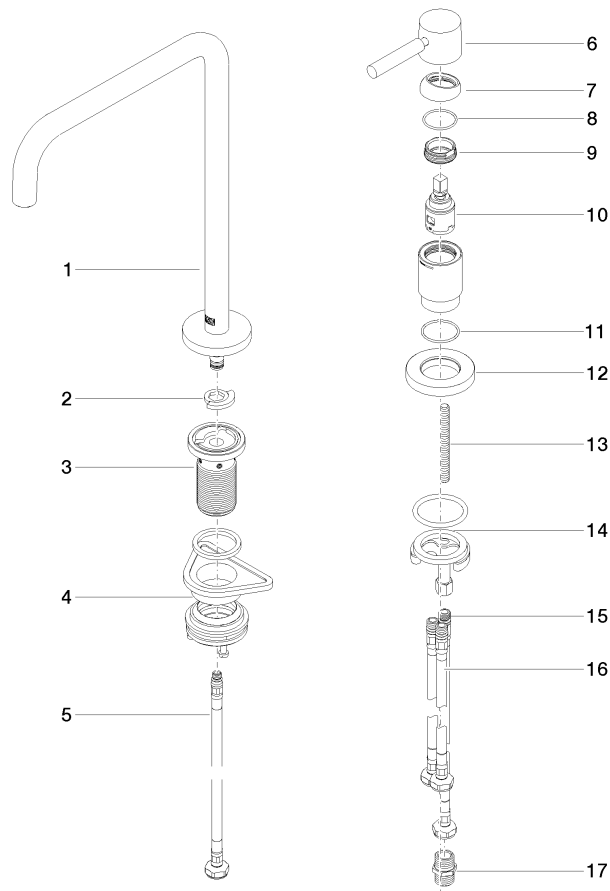


META SQUARE Two-hole mixer with individual flanges with side spray set - Chrome

ST 110 109 7861

META SQUARE Two-hole mixer with individual flanges with side spray set - Chrome

ST 110 109 7861



Spare parts list

Number	Item Number	Designation	Number of units	Lead time
1	90 28 22 288 00-00	spout	1	-
Spare part can no longer be ordered, please order the replacement item				
2	12 820 970 90	Swivel limiter set -	1	2
3	90 30 01 299 00 90	shaft	1	2
4	04 23 10 044 08 90	fixing set	1	2
5	04 30 04 100 00 90	hose	1	2
6	90 20 66 003 00-00	handle	1	10
7	09 28 30 026-00	cover	1	10
8	09 14 10 091 90	seal	1	2
9	09 24 04 266 90	nut	1	2
10	90 15 05 042 00 90	cartridge	1	2
11	09 14 10 110 90	seal	1	2
12	09 27 97 040-00	rosette	1	10
13	09 31 11 011 90	pin	1	2
14	04 30 11 085 97 90	fixing set	1	2
15	04 30 04 104 00 90	hose	1	2
16	04 30 04 107 00 90	hose	2	2
17	90 24 03 250 00 90	nipple	1	2

META SQUARE Two-hole mixer with individual flanges with side spray set - Chrome

ST 110 109 7861



- With round flange
- Spray mode
- Integrated diverter
- Total height 7-1/2"
- Side spray hole diameter 1-1/4"
- Fabric braided spray hose 59"
- Sprayface with descaling system
- lead-free













Can only be combined with 32815682, 33826861, 32815861, 33836888, 32816888, 20816892, 33836875, 32815875.

Internal backflow preventer.

Residual water may drip from the sprayer after shut-off

Flexible positioning of components.

Button has to be pressed while using.

	Chrome	27 731 970-00
	Brushed Platinum	27 731 970-06
	Platinum	27 731 970-08
	Durabronze (23kt Gold)	27 731 970-09
	Dark Chrome	27 731 970-19
	Brushed Durabronze (23kt Gold)	27 731 970-28
	Matte Black	27 731 970-33
	Brushed Bronze	27 731 970-42
	Brushed Champagne (22kt Gold)	27 731 970-46
	Champagne (22kt Gold)	27 731 970-47
	Brushed Chrome	27 731 970-93
	Brushed Dark Platinum	27 731 970-99

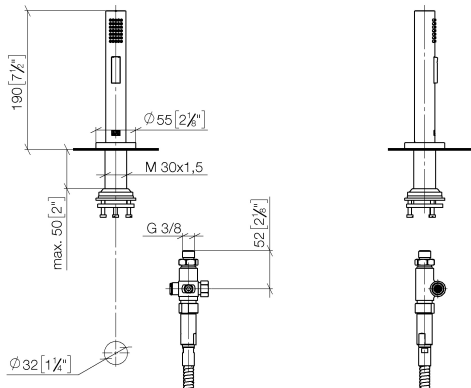


META SQUARE Two-hole mixer with individual flanges with side spray set - Chrome

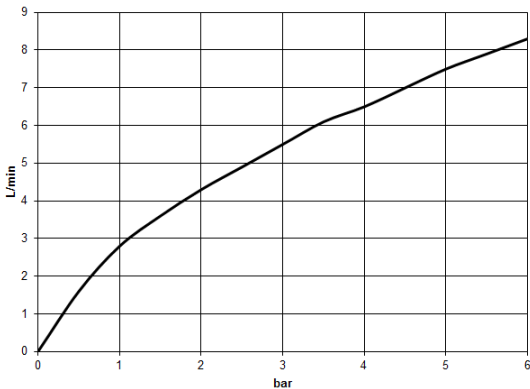
ST 110 109 7861

META SQUARE Two-hole mixer with individual flanges with side spray set - Chrome

ST 110 100 7861
mm [inches]



Flow rate chart



Codes & Standards

DIN 4109	EN 1717	ISO 3822	NSF372
NSF61	Ü-Zeichen		

Certificates

IAPMO_6397	LGA_29	LGA_38	Belgaqua_24-005-2 IAPMO_N-4976
IAPMO_6397			

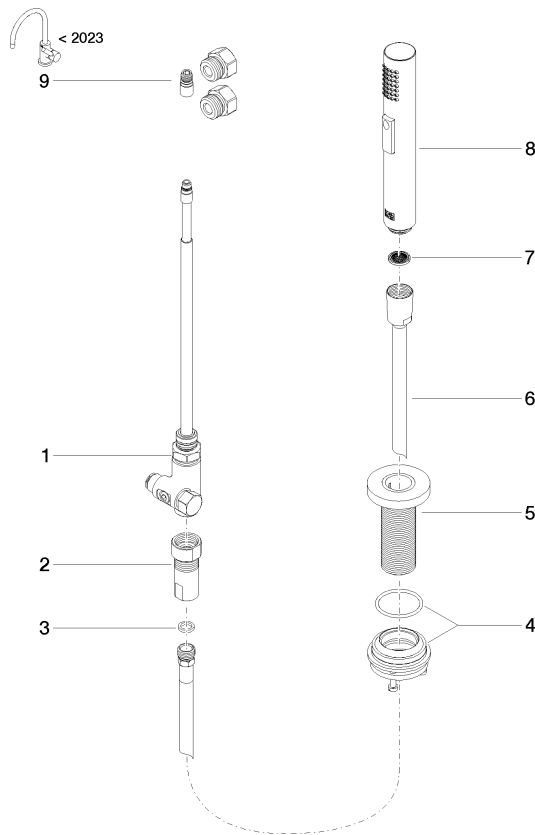


META SQUARE Two-hole mixer with individual flanges with side spray set - Chrome

ST 110 109 7861

META SQUARE Two-hole mixer with individual flanges with side spray set - Chrome

ST 110 109 7861
Parts for other
finishes can be found
here: Brushed
Platinum



Spare parts list

Number	Item Number	Designation	Number of units	Lead time
1	90 17 09 046 12 90	diverter	1	2
2	90 24 03 241 00 90	nipple	1	2
3	90 14 20 019 00 90	seal	1	2
4	04 23 10 047 00 92	fixing set	1	60
5	90 27 86 001 00-00	rosette	1	10
6	90 30 02 062 00-00	hose	1	10
7	09 23 01 039 90	sieve	1	2
8	04 12 11 158 00-00	shower	1	10
9	90 17 09 046 14 90	conversion kit	1	2