

TARA Three-hole mixer with side spray set - Brushed Champagne (22kt Gold)

ST 110 202 1892



- 9-1/4" Projection
- Swiveling spout 360°
- Aerated stream and spray mode
- Integrated diverter
- Individual flanges 2-1/8" x 2-1/8"
- Total height 14-5/8"
- Height to aerator/spout outlet 8-3/8"
- Side spray hole diameter 1-1/4"
- 2 x pressure hose with 3/8" compression fitting
- Fabric braided spray hose 59"
- Sprayface with descaling system
- Water flow rate limited to max. 1.5 gpm
- lead-free
- This product can help a building meet the requirements of Green Building Rating Systems, e.g. LEED®, BREEAM®, DGNB

	Brushed Champagne (22kt Gold)	ST 110 202 1892-46 0010
	Chrome	ST 110 202 1892-00 0010
	Brushed Platinum	ST 110 202 1892-06 0010
	Platinum	ST 110 202 1892-08 0010
	Durabronze (23kt Gold)	ST 110 202 1892-09 0010
	Dark Chrome	ST 110 202 1892-19 0010
	Brushed Durabronze (23kt Gold)	ST 110 202 1892-28 0010
	Matte Black	ST 110 202 1892-33 0010
	Brushed Bronze	ST 110 202 1892-42 0010
	Champagne (22kt Gold)	ST 110 202 1892-47 0010
	Brushed Chrome	ST 110 202 1892-93 0010
	Brushed Dark Platinum	ST 110 202 1892-99 0010

Individual components of this set

The following components are needed for this set



1x 27 731 970-46



1x 20 816 892-46 0010



TARA Three-hole mixer with side spray set - Brushed Champagne (22kt Gold)

ST 110 202 1892

TARA Three-hole mixer with side spray set - Brushed Champagne (22kt Gold)

ST 110 202 1892



- With round flange
- Spray mode
- Integrated diverter
- Total height 7-1/2"
- Side spray hole diameter 1-1/4"
- Fabric braided spray hose 59"
- Sprayface with descaling system
- lead-free

Can only be combined with 32815682, 33826861, 32815861, 33836888, 32816888, 20816892, 33836875, 32815875.

Internal backflow preventer.

Residual water may drip from the sprayer after shut-off

Flexible positioning of components.

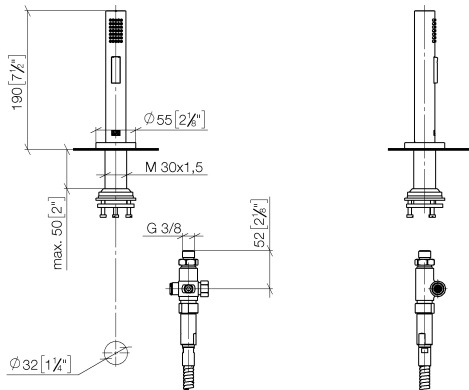
Button has to be pressed while using.

	Brushed Champagne (22kt Gold)	27 731 970-46
	Chrome	27 731 970-00
	Brushed Platinum	27 731 970-06
	Platinum	27 731 970-08
	Durabronze (23kt Gold)	27 731 970-09
	Dark Chrome	27 731 970-19
	Brushed Durabronze (23kt Gold)	27 731 970-28
	Matte Black	27 731 970-33
	Brushed Bronze	27 731 970-42
	Champagne (22kt Gold)	27 731 970-47
	Brushed Chrome	27 731 970-93
	Brushed Dark Platinum	27 731 970-99

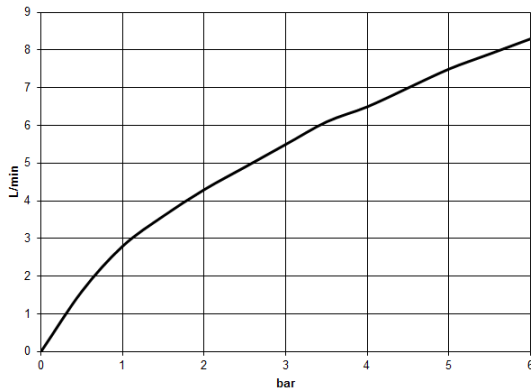
TARA Three-hole mixer with side spray set - Brushed Champagne (22kt Gold)

ST 110 202 1892

mm [inches]



Flow rate chart



Codes & Standards

DIN 4109	EN 1717	ISO 3822	NSF372
NSF61	Ü-Zeichen		

Certificates

IAPMO_6397	LGA_29	LGA_38	Belgaqua_24-005-2 IAPMO_N-4976
IAPMO_6397			



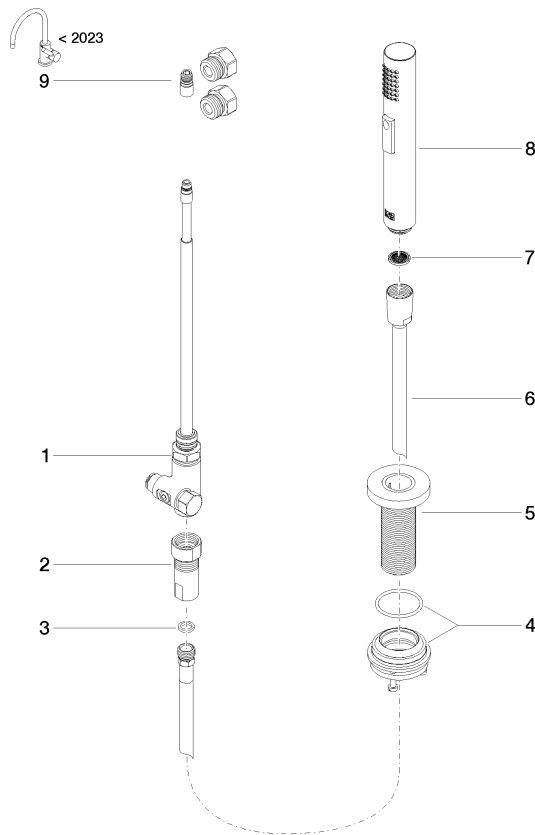
TARA Three-hole mixer with side spray set - Brushed Champagne (22kt Gold)

ST 110 202 1892

TARA Three-hole mixer with side spray set - Brushed Champagne (22kt Gold)

ST 110 202 1892

Parts for other
finishes can be found
here: [Chrome](#)



Spare parts list

Number	Item Number	Designation	Number of units	Lead time
1	90 17 09 046 12 90	diverter	1	2
2	90 24 03 241 00 90	nipple	1	2
3	90 14 20 019 00 90	seal	1	2
4	04 23 10 047 00 92	fixing set	1	60
5	90 27 86 001 00-46	rosette	1	-
Spare part can no longer be ordered, please order the replacement item				
6	90 30 02 062 00-46	hose	1	-
Spare part can no longer be ordered, please order the replacement item				
7	09 23 01 039 90	sieve	1	2
8	04 12 11 158 00-46	shower	1	60
9	90 17 09 046 14 90	conversion kit	1	2

TARA Three-hole mixer with side spray set - Brushed Champagne (22kt Gold)

ST 110 202 1892



- 9-1/4" Projection
 - Swiveling spout 360°
 - Aerated stream
 - Total height 14-5/8"
 - Height to aerator/spout outlet 8-3/8"
 - Spout hole diameter 1-3/8"
 - Valve hole diameter 1-1/4"
 - Water flow rate limited to max. 1.5 gpm
 - lead-free
 - This product can help a building meet the requirements of Green Building Rating Systems, e.g. LEED®, BREEAM®, DGNB
- (ADA)

	Brushed Champagne (22kt Gold)	20 816 892-46 0010
	Chrome	20 816 892-00 0010
	Brushed Platinum	20 816 892-06 0010
	Platinum	20 816 892-08 0010
	Durabrand (23kt Gold)	20 816 892-09 0010
	Dark Chrome	20 816 892-19 0010
	Brushed Durabrand (23kt Gold)	20 816 892-28 0010
	Matte Black	20 816 892-33 0010
	Brushed Bronze	20 816 892-42 0010
	Champagne (22kt Gold)	20 816 892-47 0010
	Brushed Chrome	20 816 892-93 0010
	Brushed Dark Platinum	20 816 892-99 0010

Recommended article



AIR SWITCH operating button, trim parts only - Brushed Champagne (22kt Gold) 10 713 970-46

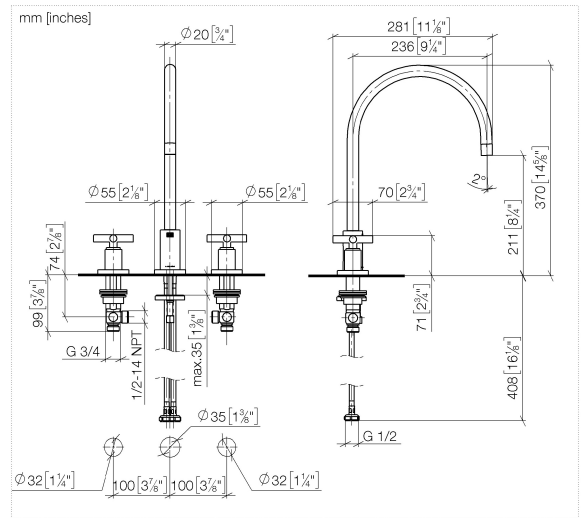


TARA Three-hole mixer with side spray set - Brushed Champagne (22kt Gold)

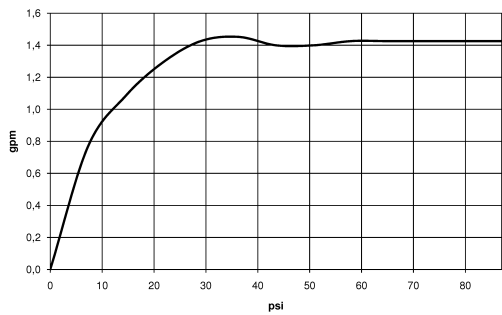
ST 110 202 1892

TARA Three-hole mixer with side spray set - Brushed Champagne (22kt Gold)

ST 110 202 1892



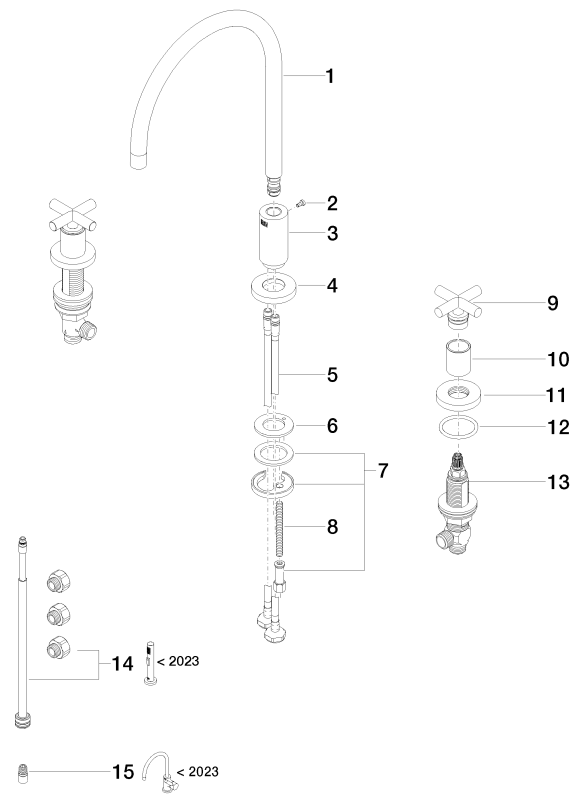
Flow rate chart



TARA Three-hole mixer with side spray set - Brushed Champagne (22kt Gold)

ST 110 202 1892

Parts for other
finishes can be found
here: [Chrome](#)



Spare parts list

Number	Item Number	Designation	Number of units	Lead time
1	90 28 22 226 02-46	spout	1	30
2	09 30 30 057 90	screw	1	2
3	09 11 10 036-46	connection	1	30
4	09 28 10 140-46	ring	1	60
5	04 30 04 019 00 90	hose	2	2
6	09 14 05 047 90	seal	1	2
7	04 30 11 038 00 90	fixing set	1	2
8	09 31 11 011 90	pin	1	2
9	90 20 89 010 10-46	handle	2	30
10	09 21 02 140-46	sleeve	2	60
11	09 27 89 105-46	rosette	2	60
12	90 14 10 043 00 90	seal	2	2
13	90 17 11 040 51 90	side panel	2	2
14	90 17 09 046 13 90	conversion kit	1	2
15	90 24 03 537 01 90	adaptor	1	2