

VAIA Two-hole bridge mixer with side spray set - Brushed Platinum

ST 110 202 4809



- 9-1/2" Projection
- Swiveling spout 360°
- Aerated stream and spray mode
- Integrated diverter
- Total height 13-7/8"
- Height to aerator/spout outlet 9-1/2"
- Side spray hole diameter 1-1/4"
- 2 x pressure hose with 3/8" compression fitting
- Fabric braided spray hose 59"
- Sprayface with descaling system
- Water flow rate limited to max. 1.5 gpm
- lead-free
- This product can help a building meet the requirements of Green Building Rating Systems, e.g. LEED®, BREEAM®, DGNB

	Brushed Platinum	ST 110 202 4809-06 0010
	Chrome	ST 110 202 4809-00 0010
	Platinum	ST 110 202 4809-08 0010
	Durabronze (23kt Gold)	ST 110 202 4809-09 0010
	Dark Chrome	ST 110 202 4809-19 0010
	Brushed Durabronze (23kt Gold)	ST 110 202 4809-28 0010
	Matte Black	ST 110 202 4809-33 0010
	Brushed Bronze	ST 110 202 4809-42 0010
	Brushed Champagne (22kt Gold)	ST 110 202 4809-46 0010
	Champagne (22kt Gold)	ST 110 202 4809-47 0010
	Brushed Chrome	ST 110 202 4809-93 0010
	Brushed Dark Platinum	ST 110 202 4809-99 0010

Individual components of this set

The following components are needed for this set

	1x	27 718 809-06		1x	19 825 809-06 0010
--	----	---------------	--	----	--------------------



VAIA Two-hole bridge mixer with side spray set - Brushed Platinum

ST 110 202 4809

VAIA Two-hole bridge mixer with side spray set - Brushed Platinum

ST 110 202 4809



- With round flange
- Spray mode
- Integrated diverter
- Total height 6-3/4"
- Side spray hole diameter 1-1/4"
- Fabric braided spray hose 59"
- Sprayface with descaling system
- lead-free
- This product can help a building meet the requirements of Green Building Rating Systems, e.g. LEED®, BREEAM®, DGNB

(ADA)

Can only be combined with 33810809, 33826809, 19815809, 19825809.

Internal backflow preventer.

Residual water may drip from the sprayer after shut-off

Flexible positioning of components.

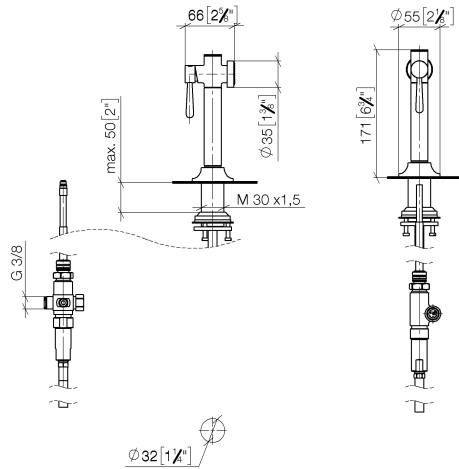
Button has to be pressed while using.

	Brushed Platinum	27 718 809-06
	Chrome	27 718 809-00
	Platinum	27 718 809-08
	Durabronze (23kt Gold)	27 718 809-09
	Dark Chrome	27 718 809-19
	Brushed Durabronze (23kt Gold)	27 718 809-28
	Matte Black	27 718 809-33
	Brushed Bronze	27 718 809-42
	Brushed Champagne (22kt Gold)	27 718 809-46
	Champagne (22kt Gold)	27 718 809-47
	Brushed Chrome	27 718 809-93
	Brushed Dark Platinum	27 718 809-99

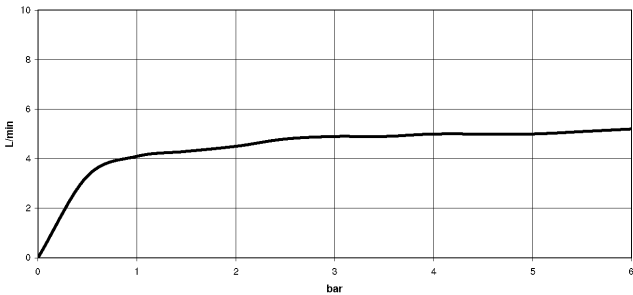
VAIA Two-hole bridge mixer with side spray set - Brushed Platinum

ST 110 202 4809

mm [inches]



Flow rate chart



Codes & Standards

DIN 4109	ISO 3822	NSF372	NSF61
----------	----------	--------	-------

Ü-Zeichen

Certificates

LGA_38	IAPMO_N-4976	IAPMO_6397
--------	--------------	------------



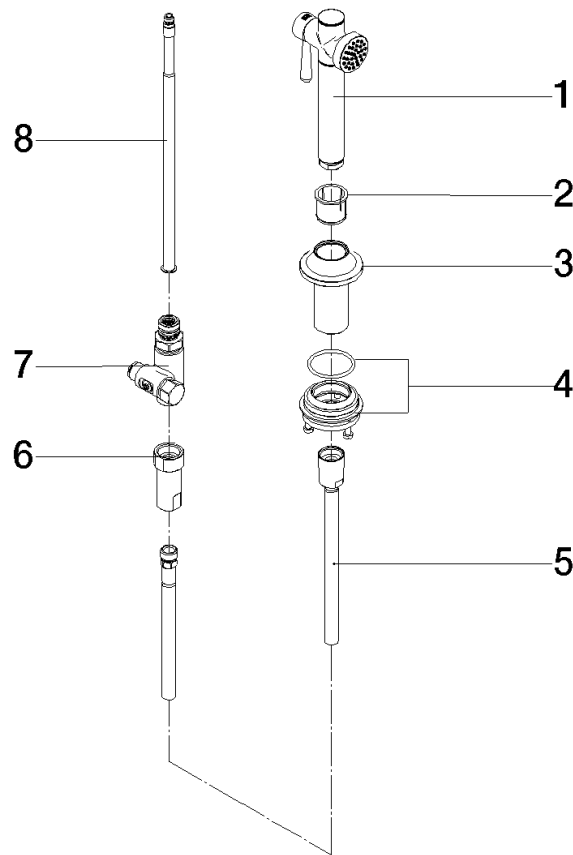
VAIA Two-hole bridge mixer with side spray set - Brushed Platinum

ST 110 202 4809

VAIA Two-hole bridge mixer with side spray set - Brushed Platinum

ST 110 202 4809

Parts for other
finishes can be found
here: [Chrome](#)



Spare parts list

Number	Item Number	Designation	Number of units	Lead time
1	90 12 11 096 12-06	shower	1	10
2	90 18 40 085 00 90	sleeve	1	2
3	90 30 01 142 00-06	shaft	1	-
Spare part can no longer be ordered, please order the replacement item				
4	04 23 10 047 00 92	fixing set	1	60
5	90 30 02 062 00-06	hose	1	10
6	90 24 03 241 00 90	nipple	1	2
7	90 17 09 046 12 90	diverter	1	2
8	90 28 20 068 00 90	connection	1	2

VAIA Two-hole bridge mixer with side spray set - Brushed Platinum

ST 110 202 4809



- 9-1/2" Projection
- Swiveling spout 360°
- Aerated stream
- Water flow rate limited to max. 1.5 gpm
- lead-free
- This product can help a building meet the requirements of Green Building Rating Systems, e.g. LEED®, BREEAM®, DGNB

Two-hole mixer for use with rinsers and professional sprayers

	Brushed Platinum	19 825 809-06 0010
	Chrome	19 825 809-00 0010
	Platinum	19 825 809-08 0010
	Durabrand (23kt Gold)	19 825 809-09 0010
	Dark Chrome	19 825 809-19 0010
	Brushed Durabrand (23kt Gold)	19 825 809-28 0010
	Matte Black	19 825 809-33 0010
	Brushed Champagne (22kt Gold)	19 825 809-46 0010
	Champagne (22kt Gold)	19 825 809-47 0010
	Brushed Chrome	19 825 809-93 0010
	Brushed Dark Platinum	19 825 809-99 0010

Recommended article



VAIA Soap dispenser with flange - 82 434 809-06
Brushed Platinum

Recommended article



VAIA AIR SWITCH operating 10 713 809-06
button, trim parts only - Brushed
Platinum



VAIA Two-hole bridge mixer with side spray set - Brushed Platinum

ST 110 202 4809



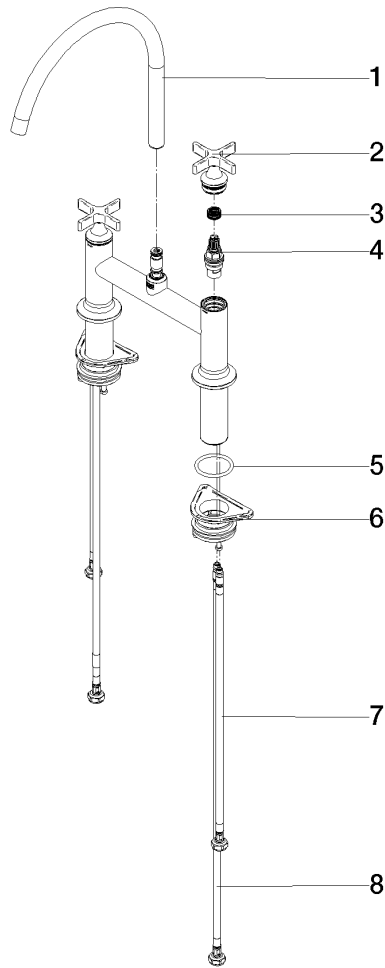
VAIA Two-hole bridge mixer with side spray set - Brushed Platinum

ST 110 202 4809

VAIA Two-hole bridge mixer with side spray set - Brushed Platinum

ST 110 202 4809

Parts for other
finishes can be found
here: [Chrome](#)



Spare parts list

Number	Item Number	Designation	Number of units	Lead time
1	90 28 22 396 01-06	spout	1	10
2	90 20 80 036 00-06	handle	2	-
Spare part can no longer be ordered, please order the replacement item				
3	90 12 12 232 00 90	fixing cap	2	2
4	90 90 03 131 00 90	top	2	2
5	90 14 10 043 00 90	seal	2	2
6	04 30 11 040 00 90	fixing set	2	2
7	04 30 04 100 00 90	hose	2	2
8	04 30 04 103 00 90	hose	2	2