

Two-hole bridge mixer with side spray set

ST 110 202 6809



- 9-1/2" Projection
- Swiveling spout 360°
- Aerated stream and spray mode
- Integrated diverter
- Total height 13-7/8"
- Height to aerator/spout outlet 9-1/2"
- Side spray hole diameter 1-1/4"
- 2 x pressure hose with 3/8" compression fitting
- Fabric braided spray hose 59"
- Sprayface with descaling system
- Water flow rate limited to max. 1.5 gpm
- lead-free
- This product can help a building meet the requirements of Green Building Rating Systems, e.g. LEED®, BREEAM®, DGNB

| | | |
|--|--------------------------------|-------------------------|
| | Brushed Dark Platinum | ST 110 202 6809-99 0010 |
| | Chrome | ST 110 202 6809-00 0010 |
| | Brushed Platinum | ST 110 202 6809-06 0010 |
| | Platinum | ST 110 202 6809-08 0010 |
| | Durabronze (23kt Gold) | ST 110 202 6809-09 0010 |
| | Dark Chrome | ST 110 202 6809-19 0010 |
| | Brushed Durabronze (23kt Gold) | ST 110 202 6809-28 0010 |
| | Matte Black | ST 110 202 6809-33 0010 |
| | Brushed Bronze | ST 110 202 6809-42 0010 |
| | Brushed Champagne (22kt Gold) | ST 110 202 6809-46 0010 |
| | Champagne (22kt Gold) | ST 110 202 6809-47 0010 |
| | Brushed Chrome | ST 110 202 6809-93 0010 |

Individual components of this set

The following components are needed for this set



1x 19 815 809-99 0010



1x 27 731 809-99

Two-hole bridge mixer with side spray set

ST 110 202 6809

Two-hole bridge mixer with side spray set

ST 110 202 6809



- 9-1/2" Projection
- Swiveling spout 360°
- Aerated stream
- Water flow rate limited to max. 1.5 gpm
- lead-free
- This product can help a building meet the requirements of Green Building Rating Systems, e.g. LEED®, BREEAM®, DGNB

Two-hole mixer for use with rinsers and professional sprayers

| | | |
|--|-------------------------------|--------------------|
|  | Brushed Dark Platinum | 19 815 809-99 0010 |
|  | Chrome | 19 815 809-00 0010 |
|  | Brushed Platinum | 19 815 809-06 0010 |
|  | Platinum | 19 815 809-08 0010 |
|  | Durabrand (23kt Gold) | 19 815 809-09 0010 |
|  | Dark Chrome | 19 815 809-19 0010 |
|  | Brushed Durabrand (23kt Gold) | 19 815 809-28 0010 |
|  | Matte Black | 19 815 809-33 0010 |
|  | Brushed Bronze | 19 815 809-42 0010 |
|  | Brushed Champagne (22kt Gold) | 19 815 809-46 0010 |
|  | Champagne (22kt Gold) | 19 815 809-47 0010 |
|  | Brushed Chrome | 19 815 809-93 0010 |

Recommended article

VAIA Soap dispenser with flange - 82 434 809-99
Brushed Dark Platinum



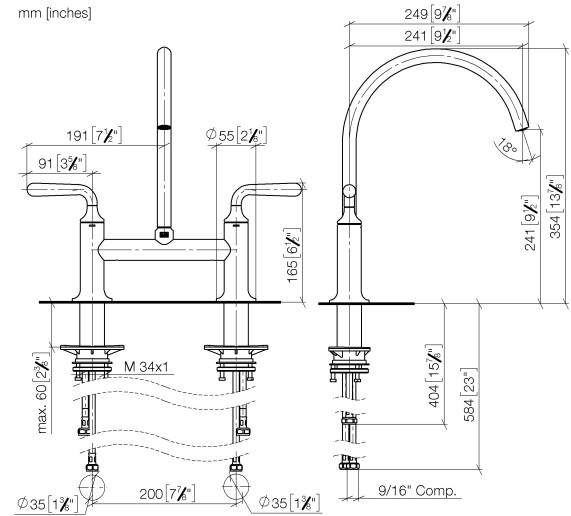
Recommended article

VAIA AIR SWITCH operating 10 713 809-99
button, trim parts only - Brushed
Dark Platinum

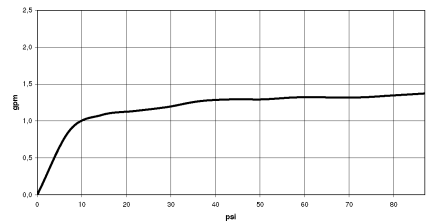


Two-hole bridge mixer with side spray set

ST 110 202 6809



Flow rate chart



Codes & Standards

| | | | |
|----------------|------------------------------------|------|--------|
| ASME A112.18.1 | California Energy Commission (CEC) | cUPC | NSF372 |
| NSF61 | | | |

Certificates

| | | |
|------------|--------------|------------|
| IAPMO_4976 | IAPMO_N-4976 | IAPMO_6397 |
|------------|--------------|------------|

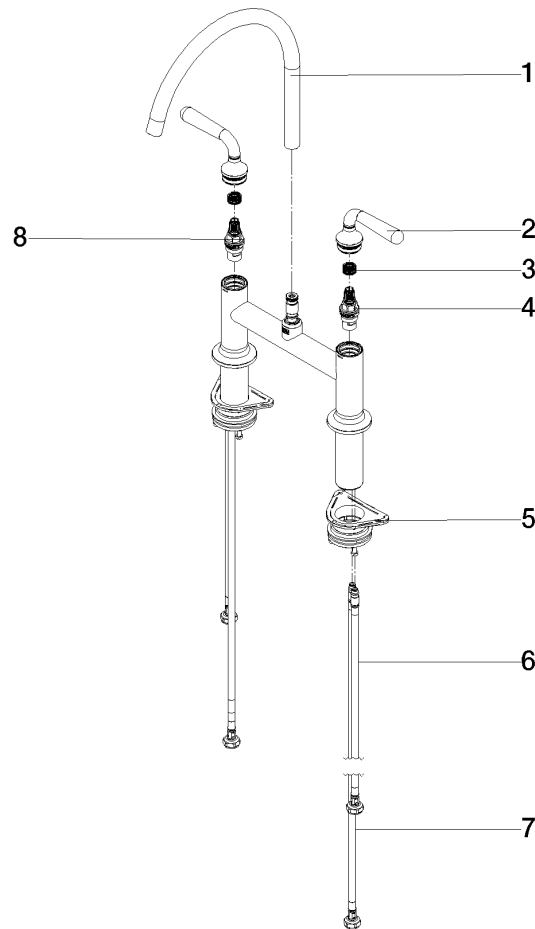
Two-hole bridge mixer with side spray set

ST 110 202 6809

Two-hole bridge mixer with side spray set

ST 110 202 6809

Parts for other
finishes can be found
here: [Chrome](#)



Spare parts list

| Number | Item Number | Designation | Number of units | Lead time |
|--|--------------------|-------------|-----------------|-----------|
| 1 | 90 28 22 396 01-99 | spout | 1 | 20 |
| 2 | 90 20 80 057 00-99 | handle | 2 | - |
| Spare part can no longer be ordered, please order the replacement item | | | | |
| 3 | 90 12 12 232 00 90 | fixing cap | 2 | 2 |
| 4 | 90 90 03 130 00 90 | top | 1 | 2 |
| 5 | 04 30 11 040 00 90 | fixing set | 2 | 2 |
| 6 | 04 30 04 100 00 90 | hose | 2 | 2 |
| 7 | 04 30 04 103 00 90 | hose | 2 | 2 |
| 8 | 90 90 03 131 00 90 | top | 1 | 2 |

Two-hole bridge mixer with side spray set

ST 110 202 6809



- With round flange
- Spray mode
- Integrated diverter
- Total height 8"
- Side spray hole diameter 1-1/4"
- Fabric braided spray hose 59"
- Sprayface with descaling system
- lead-free

Can only be combined with 33810809, 33826809, 19815809, 19825809.

Internal backflow preventer.

Residual water may drip from the sprayer after shut-off

Flexible positioning of components.

Button has to be pressed while using.

| | | |
|--|-------------------------------|---------------|
|  | Brushed Dark Platinum | 27 731 809-99 |
|  | Chrome | 27 731 809-00 |
|  | Brushed Platinum | 27 731 809-06 |
|  | Platinum | 27 731 809-08 |
|  | Durabrand (23kt Gold) | 27 731 809-09 |
|  | Dark Chrome | 27 731 809-19 |
|  | Brushed Durabrand (23kt Gold) | 27 731 809-28 |
|  | Matte Black | 27 731 809-33 |
|  | Brushed Bronze | 27 731 809-42 |
|  | Brushed Champagne (22kt Gold) | 27 731 809-46 |
|  | Champagne (22kt Gold) | 27 731 809-47 |
|  | Brushed Chrome | 27 731 809-93 |

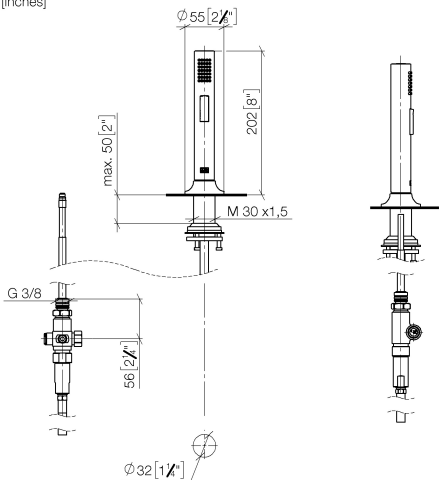
Two-hole bridge mixer with side spray set

ST 110 202 6809

Two-hole bridge mixer with side spray set

ST 110 202 6809

mm [inches]



Codes & Standards

| | | | |
|----------|-----------|----------|--------|
| DIN 4109 | EN 1717 | ISO 3822 | NSF372 |
| NSF61 | Ü-Zeichen | | |

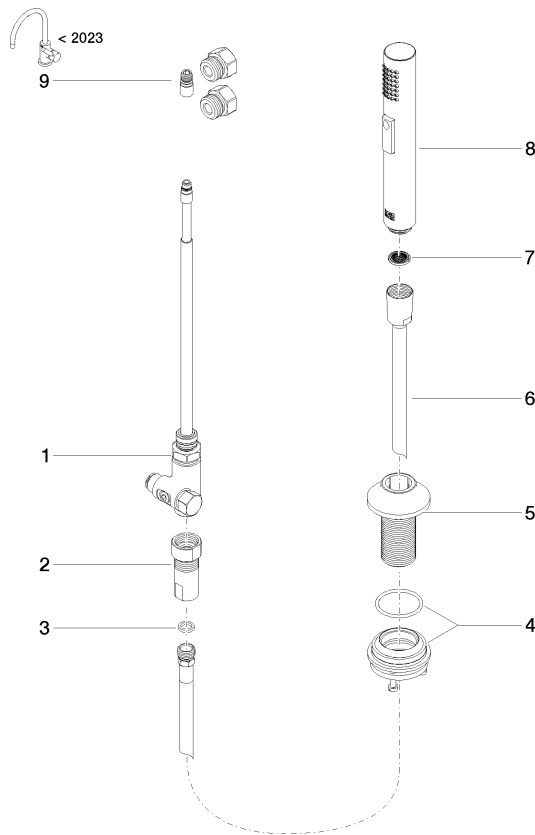
Certificates

| | | | |
|--------|-------------------|--------------|------------|
| LGA_29 | Belgaqua_24-005-2 | IAPMO_N-4976 | IAPMO_6397 |
|--------|-------------------|--------------|------------|

Two-hole bridge mixer with side spray set

ST 110 202 6809

Parts for other
finishes can be found
here: [Chrome](#)



Spare parts list

| Number | Item Number | Designation | Number of units | Lead time |
|--|--------------------|----------------|-----------------|-----------|
| 1 | 90 17 09 046 12 90 | diverter | 1 | 2 |
| 2 | 90 24 03 241 00 90 | nipple | 1 | 2 |
| 3 | 90 14 20 019 00 90 | seal | 1 | 2 |
| 4 | 04 23 10 047 00 92 | fixing set | 1 | 60 |
| 5 | 90 30 01 142 00-99 | shaft | 1 | - |
| Spare part can no longer be ordered, please order the replacement item | | | | |
| 6 | 90 30 02 062 00-99 | hose | 1 | 20 |
| 7 | 09 23 01 039 90 | sieve | 1 | 2 |
| 8 | 04 12 11 158 00-99 | shower | 1 | 20 |
| 9 | 90 17 09 046 14 90 | conversion kit | 1 | 2 |