

Three-hole mixer

ST 110 202 9892

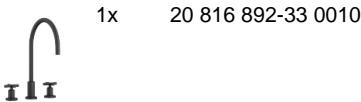
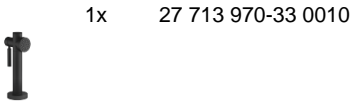


- 9-1/4" Projection
- Swiveling spout 360°
- Aerated stream and spray mode
- Integrated diverter
- Individual flanges 2-1/8" x 2-1/8"
- Total height 14-5/8"
- Height to aerator/spout outlet 8-3/8"
- Side spray hole diameter 1-1/4"
- 2 x pressure hose with 3/8" compression fitting
- Fabric braided spray hose 59"
- Sprayface with descaling system
- Water flow rate limited to max. 1.5 gpm
- lead-free
- This product can help a building meet the requirements of Green Building Rating Systems, e.g. LEED®, BREEAM®, DGNB

	Matte Black	ST 110 202 9892-33 0010
	Chrome	ST 110 202 9892-00 0010
	Brushed Platinum	ST 110 202 9892-06 0010
	Platinum	ST 110 202 9892-08 0010
	Durabrace (23kt Gold)	ST 110 202 9892-09 0010
	Dark Chrome	ST 110 202 9892-19 0010
	Brushed Durabrace (23kt Gold)	ST 110 202 9892-28 0010
	Brushed Bronze	ST 110 202 9892-42 0010
	Brushed Champagne (22kt Gold)	ST 110 202 9892-46 0010
	Champagne (22kt Gold)	ST 110 202 9892-47 0010
	Brushed Chrome	ST 110 202 9892-93 0010
	Brushed Dark Platinum	ST 110 202 9892-99 0010

Individual components of this set

The following components are needed for this set



Three-hole mixer

ST 110 202 9892

Three-hole mixer

ST 110 202 9892



- With round flange
- Spray mode
- Integrated diverter
- Total height 6-1/4"
- Side spray hole diameter 1-1/4"
- Fabric braided spray hose 59"
- Sprayface with descaling system
- lead-free

(ADA)

Can only be combined with 32815682, 33826861, 32815861, 33836888, 32816888, 20816892, 33836875, 32815875.

Internal backflow preventer.

Residual water may drip from the sprayer after shut-off

Flexible positioning of components.

Button has to be pressed while using.

	Matte Black	27 713 970-33 0010
	Chrome	27 713 970-00 0010
	Brushed Platinum	27 713 970-06 0010
	Platinum	27 713 970-08 0010
	Durabrand (23kt Gold)	27 713 970-09 0010
	Dark Chrome	27 713 970-19 0010
	Brushed Durabrand (23kt Gold)	27 713 970-28 0010
	Brushed Bronze	27 713 970-42 0010
	Brushed Champagne (22kt Gold)	27 713 970-46 0010
	Champagne (22kt Gold)	27 713 970-47 0010
	Brushed Chrome	27 713 970-93 0010
	Brushed Dark Platinum	27 713 970-99 0010

Three-hole mixer

ST 110 202 9892

Codes & Standards

NSF372	NSF61
--------	-------

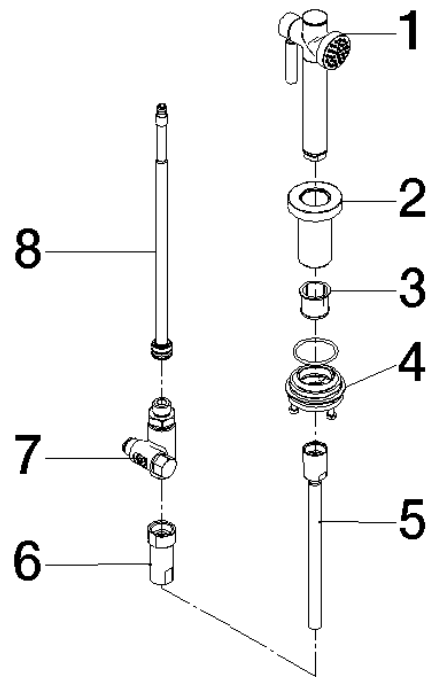
Certificates

IAPMO_N-4976	IAPMO_6397
--------------	------------

Three-hole mixer

ST 110 202 9892

Parts for other
finishes can be found
here: [Chrome](#)



Spare parts list

Number	Item Number	Designation	Number of units	Lead time
1	90 12 11 096 12-33	shower	1	30
2	09 30 01 085-33	rosette	1	30
3	90 18 40 085 00 90	sleeve	1	2
4	04 23 10 047 00 92	fixing set	1	60
5	90 30 02 062 00-33	hose	1	30
6	90 24 03 241 00 90	nipple	1	2
7	90 17 09 046 12 90	diverter	1	2
8	90 28 20 068 00 90	connection	1	2

Three-hole mixer

ST 110 202 9892



- 9-1/4" Projection
 - Swiveling spout 360°
 - Aerated stream
 - Total height 14-5/8"
 - Height to aerator/spout outlet 8-3/8"
 - Spout hole diameter 1-3/8"
 - Valve hole diameter 1-1/4"
 - Water flow rate limited to max. 1.5 gpm
 - lead-free
 - This product can help a building meet the requirements of Green Building Rating Systems, e.g. LEED®, BREEAM®, DGNB
- (ADA)

	Matte Black	20 816 892-33 0010
	Chrome	20 816 892-00 0010
	Brushed Platinum	20 816 892-06 0010
	Platinum	20 816 892-08 0010
	Durabronze (23kt Gold)	20 816 892-09 0010
	Dark Chrome	20 816 892-19 0010
	Brushed Durabronze (23kt Gold)	20 816 892-28 0010
	Brushed Bronze	20 816 892-42 0010
	Brushed Champagne (22kt Gold)	20 816 892-46 0010
	Champagne (22kt Gold)	20 816 892-47 0010
	Brushed Chrome	20 816 892-93 0010
	Brushed Dark Platinum	20 816 892-99 0010

Recommended article

AIR SWITCH operating button, trim parts only - Matte Black 10 713 970-33

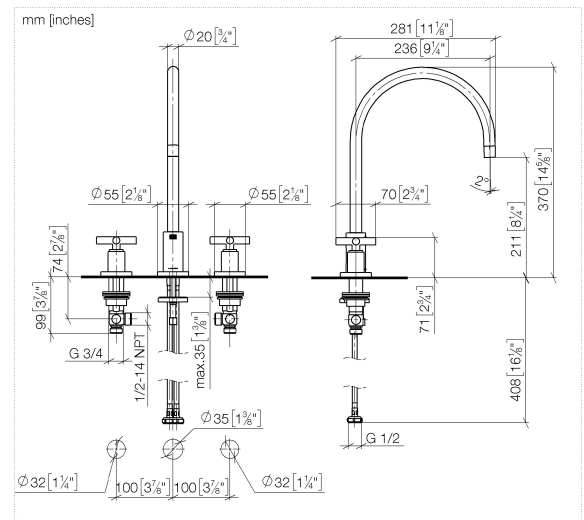


Three-hole mixer

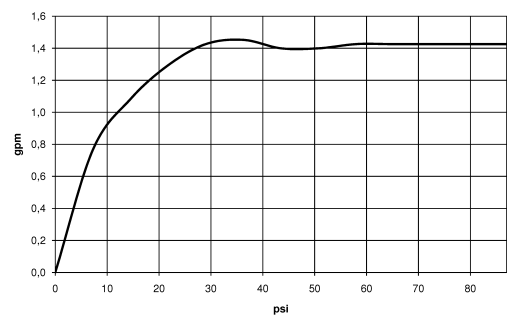
ST 110 202 9892

Three-hole mixer

ST 110 202 9892



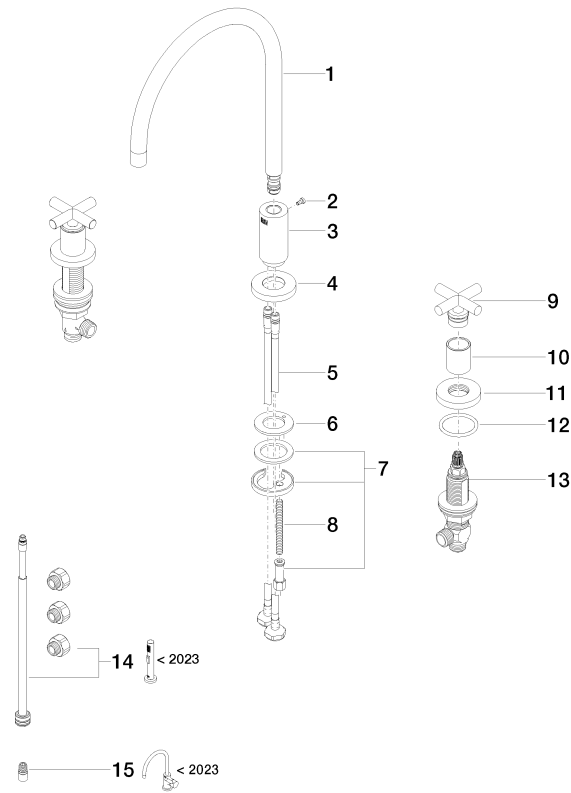
Flow rate chart



Three-hole mixer

ST 110 202 9892

Parts for other
finishes can be found
here: [Chrome](#)



Spare parts list

Number	Item Number	Designation	Number of units	Lead time
1	90 28 22 226 02-33	spout	1	30
2	09 30 30 057 90	screw	1	2
3	09 11 10 036-33	connection	1	2
4	09 28 10 140-33	ring	1	2
5	04 30 04 019 00 90	hose	2	2
6	09 14 05 047 90	seal	1	2
7	04 30 11 038 00 90	fixing set	1	2
8	09 31 11 011 90	pin	1	2
9	90 20 89 010 10-33	handle	2	30
10	09 21 02 140-33	sleeve	2	30
11	09 27 89 105-33	rosette	2	30
12	90 14 10 043 00 90	seal	2	2
13	90 17 11 040 51 90	side panel	2	2
14	90 17 09 046 13 90	conversion kit	1	2
15	90 24 03 537 01 90	adaptor	1	2