

Umbrella drain, cannot be closed 1 1/4" - Matte Black

10 126 970 Product version from 10/1/2023



- Min. basin thickness 5/8"
- can not be closed

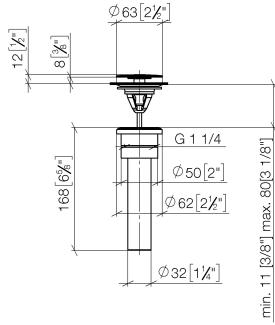
Commonly used with basins without overflow.

| | | |
|---|--------------------------------|--------------------|
|  | Matte Black | 10 126 970-33 0010 |
|  | Chrome | 10 126 970-00 0010 |
|  | Brushed Platinum | 10 126 970-06 0010 |
|  | Platinum | 10 126 970-08 0010 |
|  | Durabronze (23kt Gold) | 10 126 970-09 0010 |
|  | Dark Chrome | 10 126 970-19 0010 |
|  | Light gold | 10 126 970-26 0010 |
|  | Brushed Light Gold | 10 126 970-27 0010 |
|  | Brushed Durabronze (23kt Gold) | 10 126 970-28 0010 |
|  | Brushed Bronze | 10 126 970-42 0010 |
|  | Brushed Champagne (22kt Gold) | 10 126 970-46 0010 |
|  | Champagne (22kt Gold) | 10 126 970-47 0010 |
|  | Brushed Chrome | 10 126 970-93 0010 |
|  | Brushed Dark Platinum | 10 126 970-99 0010 |

Umbrella drain, cannot be closed 1 1/4" - Matte Black

10 126 970 Product version from 10/1/2023

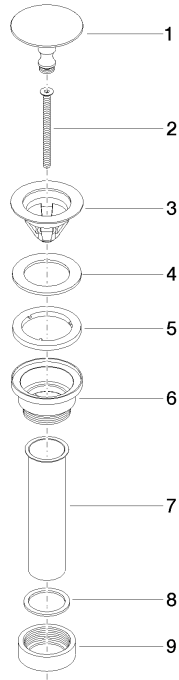
mm [inches]



Umbrella drain, cannot be closed 1 1/4" - Matte Black

10 126 970 Product version from 10/1/2023

Parts for other finishes can be found here: [Chrome](#)



Spare parts list

| Number | Item Number | Designation | Number of units | Lead time |
|--------|-----------------|-------------|-----------------|-----------|
| 1 | 09 31 20 097-33 | plug | 1 | 30 |
| 2 | 09 30 30 179 90 | screw | 1 | 2 |
| 3 | 09 11 01 038-33 | cup | 1 | 30 |
| 4 | 09 14 05 061 90 | seal | 1 | 2 |
| 5 | 09 14 03 153 90 | seal | 1 | 2 |
| 6 | 09 11 10 156-33 | connection | 1 | 60 |
| 7 | 09 28 20 055-33 | pipe | 1 | 30 |
| 8 | 09 14 05 062 90 | seal | 1 | 2 |
| 9 | 09 23 30 073-33 | nut | 1 | 30 |