

Drain 1 1/4" - Platinum

SERIES-VARIOUS

10 300 970 Product version from 10/1/2023



- Length of manual lever 7-1/4"
  - European drain with overflow
- Suitable only for basins with overflow.**

Suitable only for basins with overflow.

|   |                               |               |
|---|-------------------------------|---------------|
|    | Platinum                      | 10 300 970-08 |
|    | Chrome                        | 10 300 970-00 |
|    | Brushed Platinum              | 10 300 970-06 |
|    | Durabrand (23kt Gold)         | 10 300 970-09 |
|    | Dark Chrome                   | 10 300 970-19 |
|    | Light gold                    | 10 300 970-26 |
|    | Brushed Light Gold            | 10 300 970-27 |
|    | Brushed Durabrand (23kt Gold) | 10 300 970-28 |
|    | Matte Black                   | 10 300 970-33 |
|   | Brushed Bronze                | 10 300 970-42 |
|  | Brushed Champagne (22kt Gold) | 10 300 970-46 |
|  | Champagne (22kt Gold)         | 10 300 970-47 |
|  | Brushed Chrome                | 10 300 970-93 |
|  | Brushed Dark Platinum         | 10 300 970-99 |

Required article



Washer NBR 70 -

09 14 05 016  
90

Required article



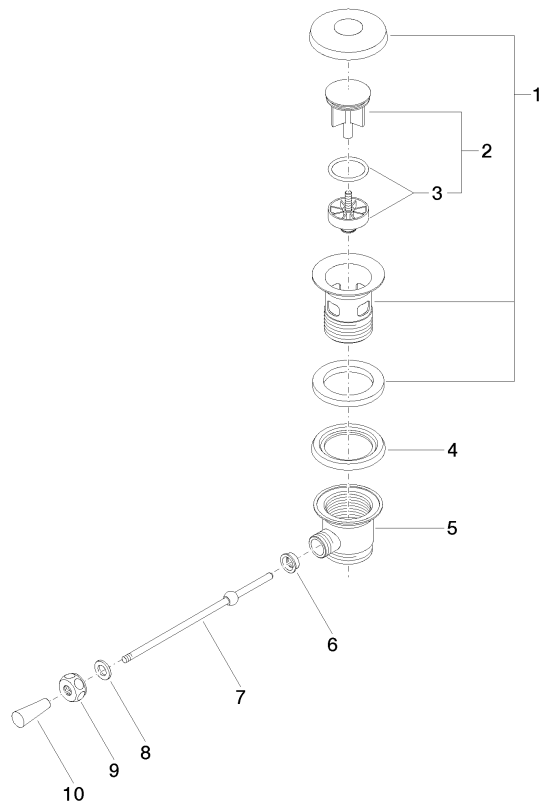
Pipe - Platinum

09 28 23 005-  
08

10 300 970 Product version from 10/1/2023

mm [inches]  
1:2





### Spare parts list

| Number | Item Number        | Designation | Number of units | Lead time |
|--------|--------------------|-------------|-----------------|-----------|
| 3      | 04 28 10 026 00 90 | accessories | 1.00            | 2         |
| 7      | 09 31 09 055-08    | pull-rod    | 1.00            | 60        |
| 5      | 09 11 01 023-08    | cup         | 1.00            | 40        |
| 6      | 09 14 05 040 90    | seal        | 1.00            | 2         |
| 9      | 09 23 30 003-08    | nut         | 1.00            | 60        |
| 4      | 09 14 03 025 90    | seal        | 1.00            | 2         |
| 1      | 90 11 01 026 00-08 | cup         | 1.00            | 40        |
| 2      | 04 31 20 016 00-08 | plug        | 1.00            | 40        |
| 10     | 09 20 01 040-08    | handle      | 1.00            | 60        |
| 8      | 09 30 11 049 90    | disc        | 1.00            | 2         |