

## Escutcheon - Champagne (22kt Gold)


SERIES-VARIOUS

12 720 980 Product version from 10/1/2023



- Flange 2-3/4" x 2-3/4"

Only for combination with exposed trim parts 36 803 885-FF / 36 804 661-FF / 36 023 885-FF / 36 023 661-FF.

|   |                                |               |
|---|--------------------------------|---------------|
|    | Champagne (22kt Gold)          | 12 720 980-47 |
|    | Chrome                         | 12 720 980-00 |
|    | Brushed Platinum               | 12 720 980-06 |
|    | Platinum                       | 12 720 980-08 |
|    | Dark Chrome                    | 12 720 980-19 |
|    | Light gold                     | 12 720 980-26 |
|    | Brushed Light Gold             | 12 720 980-27 |
|    | Brushed Durabronze (23kt Gold) | 12 720 980-28 |
|    | Matte Black                    | 12 720 980-33 |
|   | Brushed Bronze                 | 12 720 980-42 |
|  | Brushed Champagne (22kt Gold)  | 12 720 980-46 |
|  | Brushed Chrome                 | 12 720 980-93 |
|  | Brushed Dark Platinum          | 12 720 980-99 |

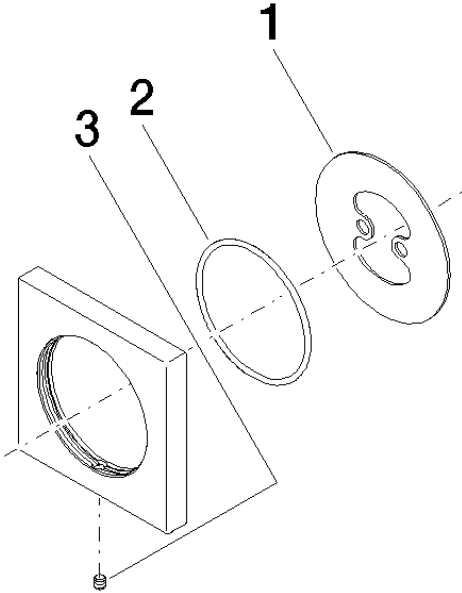
mm [inches]



Parts for other

finishes can be found

here: [Chrome](#)



Spare parts list

| Number | Item Number     | Designation | Number of units | Lead time |
|--------|-----------------|-------------|-----------------|-----------|
| 1      | 09 30 11 291 90 | disc        | 1.00            | 2         |
| 2      | 09 14 10 046 90 | seal        | 1.00            | 2         |
| 3      | 09 31 11 099 90 | pin         | 1.00            | 2         |