












Cascade tub spout for wall-mounted installation - Platinum

SERIES SPECIFIC

13 430 740 Product version from 9/1/2025



- 7-7/8" Projection
- Cascade
- Plate 7-1/8" x 2-3/8"
- 1-5/8" hole diameter
- 1/2" connection
- Plug-in connection mounting
- Water flow rate limited to max. 7 gpm

	Platinum	13 430 740-08
	Chrome	13 430 740-00
	Brushed Platinum	13 430 740-06
	Dark Chrome	13 430 740-19
	Brushed Durabronze (23kt Gold)	13 430 740-28
	Matte Black	13 430 740-33
	Brushed Champagne (22kt Gold)	13 430 740-46
	Champagne (22kt Gold)	13 430 740-47
	Brushed Dark Platinum	13 430 740-99

Required article

Rough-in adapter -

35 080 970-90
0010



13 430 740 Product version from 9/1/2025

mm [inches]



Flow rate chart



Trajectory length diagram



Codes & Standards

ASME A112.18.1

cUPC

DIN 4109

ISO 3822

Scottish Water
Byelaws

UK Water Supply
Regulations

Ü-Zeichen



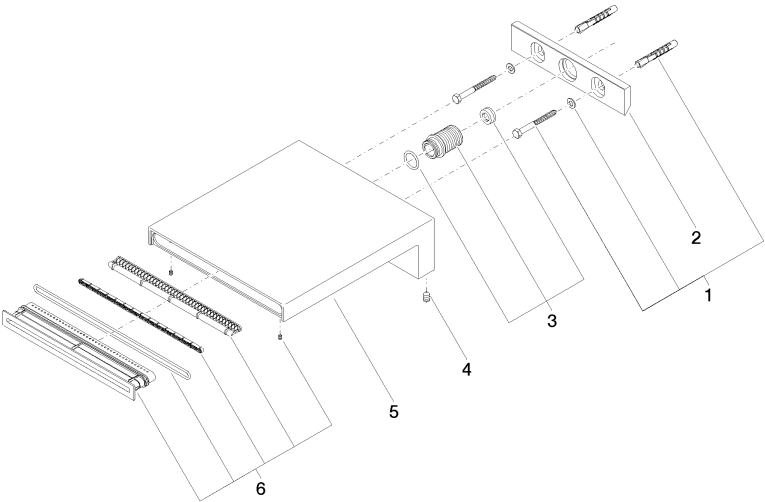
Cascade tub spout for wall-mounted installation - Platinum

SERIES SPECIFIC

13 430 740 Product version from 9/1/2025

Certificates and sustainability

IAPMO_4976	LGA_19	WRAS_240502
------------	--------	-------------



Spare parts list

Number	Item Number	Designation	Number of units	Lead time
6	90 29 03 059 00 90	insert	1.00	2
1	04 30 31 014 00 90	fixing set	1.00	2
4	09 31 11 144 90	pin	2.00	2
3	90 24 05 008 00 90	nipple set	1.00	2
2	09 17 97 056 90	holder	1.00	2
5	09 11 74 042-08	spout	1.00	40