



MEM Cascade tub spout without diverter for deck-mounted installation -  
Brushed Dark Brass

MEM

13 630 740    Product version from 9/1/2025



- 9-1/4" Projection
- Cascade
- Total height 3-7/8"
- Height to aerator/spout outlet 3-1/8"
- 1-1/4" hole diameter
- 1/2" connection
- Water flow rate limited to max. 7 gpm

	Brushed Dark Brass	13 630 740-39
	Chrome	13 630 740-00
	Brushed Platinum	13 630 740-06
	Platinum	13 630 740-08
	Dark Chrome	13 630 740-19
	Brushed Durabronze (23kt Gold)	13 630 740-28
	Brushed Champagne (22kt Gold)	13 630 740-46
	Champagne (22kt Gold)	13 630 740-47
	Brushed Dark Platinum	13 630 740-99

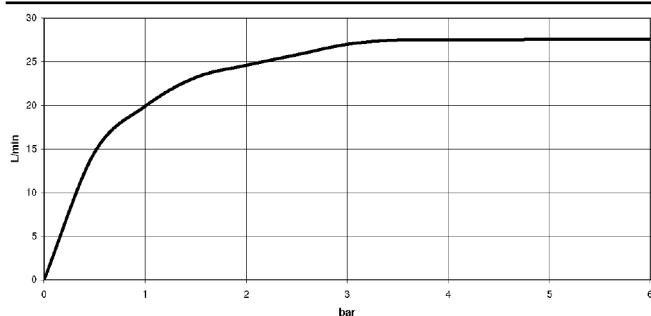
# MEM Cascade tub spout without diverter for deck-mounted installation - Brushed Dark Brass

MEM

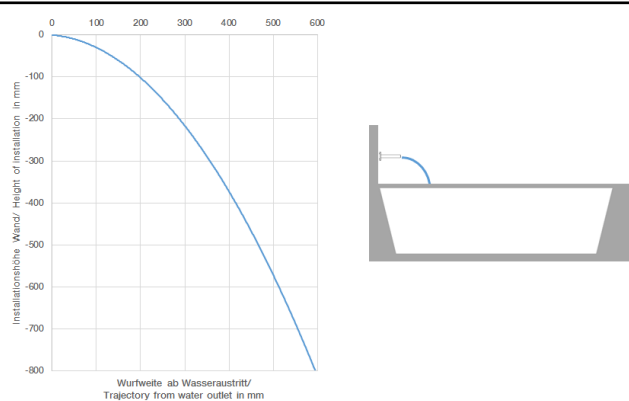
13 630 740 Product version from 9/1/2025  
mm [inches]



Flow rate chart



Trajectory length diagram



## Codes & Standards

DIN 4109

ISO 3822

Scottish Water  
Byelaws

UK Water Supply  
Regulations

Ü-Zeichen



## MEM Cascade tub spout without diverter for deck-mounted installation - Brushed Dark Brass

---

MEM

13 630 740 Product version from 9/1/2025

Certificates and sustainability

---

LGA\_19

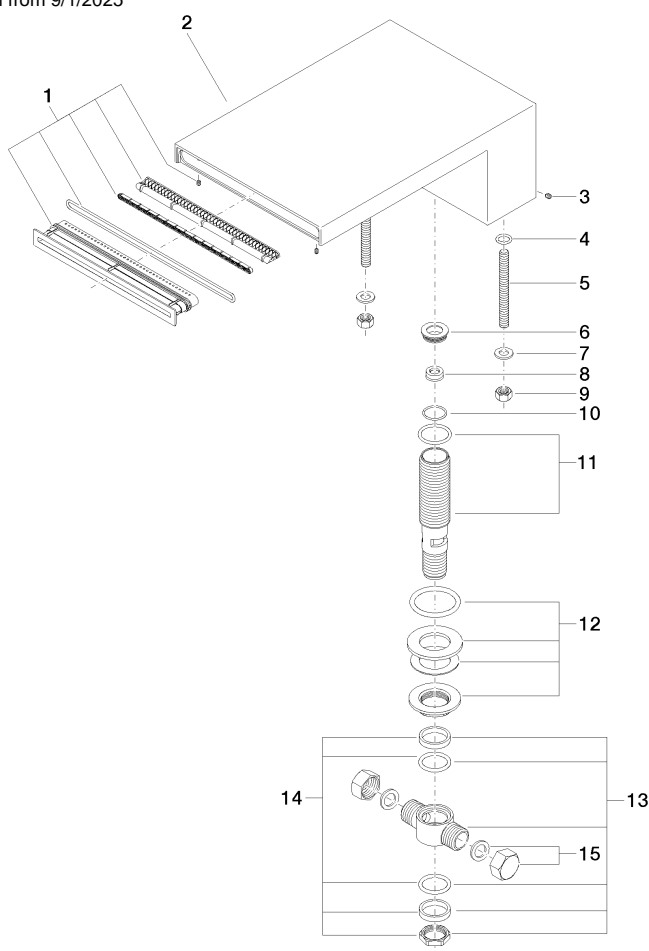
WRAS\_240502

# MEM Cascade tub spout without diverter for deck-mounted installation - Brushed Dark Brass

MEM

13 630 740 Product version from 9/1/2025

Parts for other  
finishes can be found  
here: [Chrome](#)



## Spare parts list

Number	Item Number	Designation	Number of units	Lead time
	11 90 30 01 033 00 90	base	1.00	2
	5 09 31 11 011 90	pin	2.00	2
	4 09 14 10 008 90	seal	2.00	2
	9 09 23 10 023 90	nut	2.00	2
	14 90 23 10 012 00 90	gasket kit	1.00	2
	2 09 11 74 040-39	spout	1.00	-
Spare part can no longer be ordered, please order the replacement item				
	7 09 30 11 045 90	disc	2.00	2
	13 90 17 11 020 10 90	distributor	1.00	2
	15 04 21 02 006 00 92	cap	2.00	2
	12 04 23 10 004 04 90	fixing set	1.00	2
	8 09 23 01 057 90	flow reducer	1.00	2
	1 90 29 03 059 00 90	insert	1.00	2
	3 09 31 11 044 90	pin	1.00	2
	10 09 14 10 140 90	seal	1.00	2
	6 09 24 04 246 20 90	nipple	1.00	2