

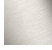





CL.1 Lavatory spout, wall-mounted without drain - Brushed Dark Platinum

13 800 705 Product version from 3/9/2015



- 7-7/8" Projection
- Rigid spout
- Rectangular aerator with 40 individual streams
- 1-1/2" hole diameter
- lead-free
- 1/2" connection
- Plug-in connection mounting
- Water flow rate limited to max. 1.2 gpm
- This product can help a building meet the requirements of Green Building Rating Systems, e.g. LEED®, BREEAM®, DGNB

	Brushed Dark Platinum	13 800 705-99
	Chrome	13 800 705-00
	Brushed Platinum	13 800 705-06
	Dark Chrome	13 800 705-19
	Brushed Champagne (22kt Gold)	13 800 705-46
	Champagne (22kt Gold)	13 800 705-47

Required article

Rough-in adapter -

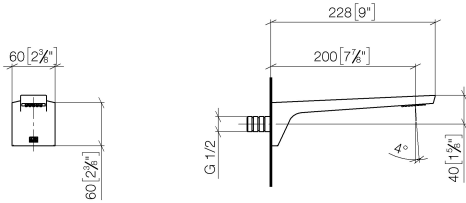
35 080 970-90
0010



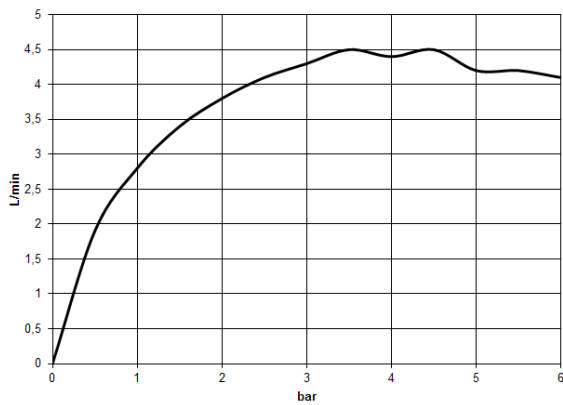
CL.1 Lavatory spout, wall-mounted without drain - Brushed Dark Platinum

13 800 705 Product version from 3/9/2015

mm [inches]



Flow rate chart



Codes & Standards

ASME A112.18.1	ASME A112.18.1/CSA B125.1	California Energy Commission (CEC)	cUPC
DIN 4109	EPA WaterSense	ISO 3822	NSF/ANSI 372
NSF/ANSI/CAN 61	NSF372	NSF61	Scottish Water Byelaws
UK Water Supply Regulations	Ü-Zeichen	Water Sense	WaterSense





CL.1 Lavatory spout, wall-mounted without drain - Brushed Dark Platinum

13 800 705 Product version from 3/9/2015

Certificates

LGA_28

IAPMO_N-4

IAPMO_4976

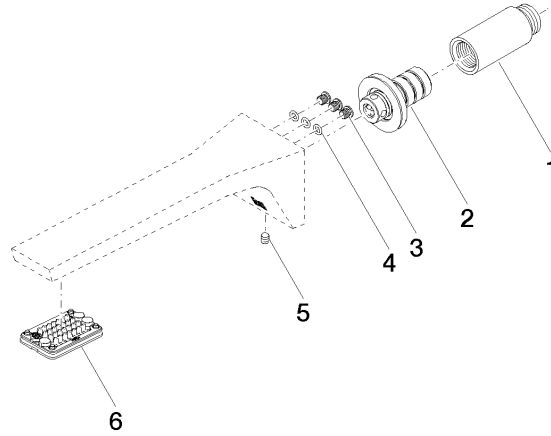
IAPMO_8834

WRAS_1512

IAPMO_6

CL.1 Lavatory spout, wall-mounted without drain - Brushed Dark Platinum

13 800 705 Product version from 3/9/2015



Spare parts list

Number	Item Number	Designation	Number of units	Lead time
1	09 24 03 081 10 90	extension	1	2
2	90 24 03 108 01 90	nipple set	1	2
3	09 30 30 113 20 90	screw	3	2
4	09 14 10 001 90	seal	3	2
5	90 31 11 004 00 90	pin	1	2
6	90 11 02 297 00 90	aerator	1	2