



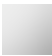





CL.1 Tub spout for wall-mounted installation - Chrome

CL.1

13 801 705 Product version from 3/9/2015



- 8-1/8" Projection
- Rectangular aerator with 55 individual streams
- 1-1/2" hole diameter
- 1/2" connection
- Plug-in connection mounting
- Water flow rate limited to max. 6.5 gpm

	Chrome	13 801 705-00
	Brushed Platinum	13 801 705-06
	Dark Chrome	13 801 705-19
	Brushed Champagne (22kt Gold)	13 801 705-46
	Champagne (22kt Gold)	13 801 705-47
	Brushed Dark Platinum	13 801 705-99

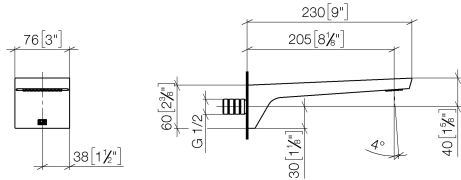
Required article

Rough-in adapter -

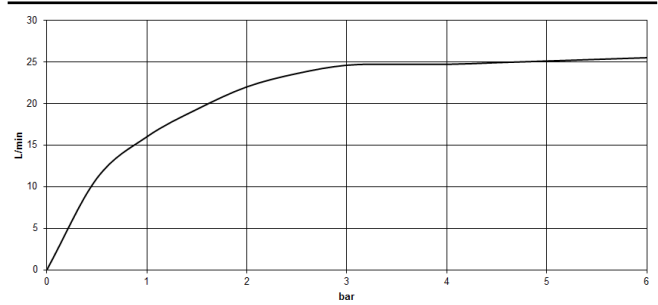
35 080 970-90
0010



mm [inches]



Flow rate chart



Codes & Standards

ASME A112.18.1	cUPC	DIN 4109	ISO 3822
Scottish Water Byelaws	UK Water Supply Regulations	Ü-Zeichen	



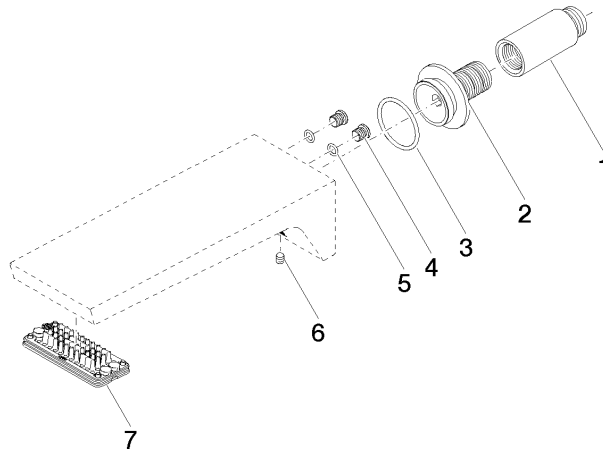
CL.1 Tub spout for wall-mounted installation - Chrome

CL.1

13 801 705 Product version from 3/9/2015

Certificates and sustainability

WRAS_1512 IAPMO_4976 LGA_28



Spare parts list

Number	Item Number	Designation	Number of units	Lead time
5	09 14 10 132 90	seal	2.00	2
7	90 11 02 299 00 90	aerator	1.00	2
1	09 24 03 081 10 90	extension	1.00	2
4	09 31 20 027 10-00	plug	2.00	10
3	09 14 10 119 90	seal	1.00	2
2	09 24 03 180 90	nipple	1.00	2
6	90 31 11 004 00 90	pin	1.00	2