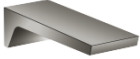










## CL.1 Tub spout for wall-mounted installation - Dark Chrome

13 801 705 Product version from 3/9/2015



- 8-1/8" Projection
- Rectangular aerator with 55 individual streams
- 1-1/2" hole diameter
- 1/2" connection
- Plug-in connection mounting
- Water flow rate limited to max. 6.5 gpm

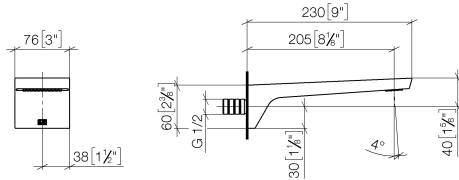
	Dark Chrome	13 801 705-19
	Chrome	13 801 705-00
	Brushed Platinum	13 801 705-06
	Brushed Champagne (22kt Gold)	13 801 705-46
	Champagne (22kt Gold)	13 801 705-47
	Brushed Dark Platinum	13 801 705-99



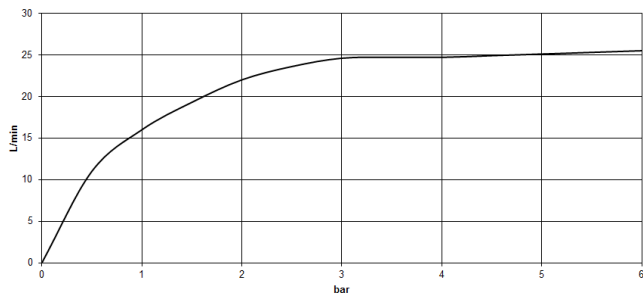
## CL.1 Tub spout for wall-mounted installation - Dark Chrome

13 801 705 Product version from 3/9/2015

mm [inches]



### Flow rate chart



### Codes & Standards

ASME A112.18.1	ASME A112.18.1/CSA B125.1	cUPC	DIN 4109
ISO 3822	Ü-Zeichen		



## CL.1 Tub spout for wall-mounted installation - Dark Chrome

---

13 801 705 Product version from 3/9/2015

### Certificates

---

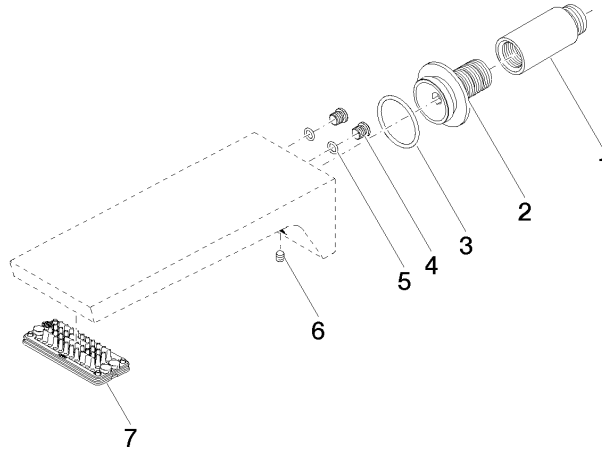
IAPMO\_4976

LGA\_28

## CL.1 Tub spout for wall-mounted installation - Dark Chrome

13 801 705 Product version from 3/9/2015

Parts for other finishes can be found here: [Chrome](#)



### Spare parts list

Number	Item Number	Designation	Number of units	Lead time
1	09 24 03 081 10 90	extension	1	2
2	09 24 03 180 90	nipple	1	2
3	09 14 10 119 90	seal	1	2
4	09 31 20 027 10-00	plug	2	10
5	09 14 10 132 90	seal	2	2
6	90 31 11 004 00 90	pin	1	2
7	90 11 02 299 00 90	aerator	1	2