



## VAIA Tub spout for wall-mounted installation - Brushed Platinum

13 801 809 Product version from 3/13/2017



- 7-7/8" Projection
- Round aerator
- 1-1/2" hole diameter
- Flange diameter 2-3/8"
- 1/2" connection
- Water flow rate limited to max. 5.7 gpm

	Brushed Platinum	13 801 809-06
	Chrome	13 801 809-00
	Platinum	13 801 809-08
	Dark Chrome	13 801 809-19
	Brushed Durabronze (23kt Gold)	13 801 809-28
	Brushed Bronze	13 801 809-42
	Brushed Champagne (22kt Gold)	13 801 809-46
	Champagne (22kt Gold)	13 801 809-47
	Brushed Dark Platinum	13 801 809-99

### Required article

**Rough-in adapter -**

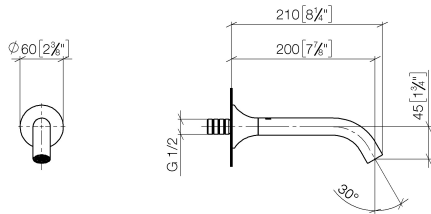
35 080 970-90  
0010



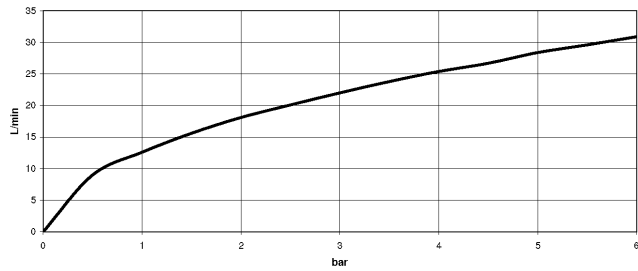
**VAIA Tub spout for wall-mounted installation - Brushed Platinum**

13 801 809 Product version from 3/13/2017

mm [inches]



**Flow rate chart**



**Codes & Standards**

ASME  
A112.18.1/CSA  
B125.1

DIN 4109

ISO 3822

Scottish Water  
Byelaws

UK Water Supply  
Regulations

Ü-Zeichen



## VAIA Tub spout for wall-mounted installation - Brushed Platinum

---

13 801 809 Product version from 3/13/2017

### Certificates

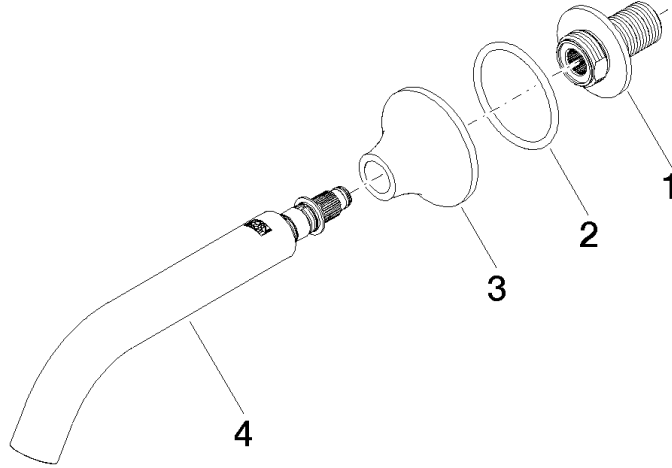
---

WRAS\_2306

LGA\_29

**VAIA Tub spout for wall-mounted installation - Brushed Platinum**

13 801 809 Product version from 3/13/2017



**Spare parts list**

Number	Item Number	Designation	Number of units	Lead time
1	09 24 03 269 90	nipple	1	2
2	09 14 10 084 90	seal	1	2
3	09 27 80 014-06	rosette	1	10
4	90 28 22 315 00-06	spout	1	10