



VAIA Tub spout for wall-mounted installation - Brushed Dark Platinum

13 801 809 Product version from 3/13/2017



- 7-7/8" Projection
- Round aerator
- 1-1/2" hole diameter
- Flange diameter 2-3/8"
- 1/2" connection
- Water flow rate limited to max. 5.7 gpm

	Brushed Dark Platinum	13 801 809-99
	Chrome	13 801 809-00
	Brushed Platinum	13 801 809-06
	Platinum	13 801 809-08
	Dark Chrome	13 801 809-19
	Brushed Durabronze (23kt Gold)	13 801 809-28
	Brushed Bronze	13 801 809-42
	Brushed Champagne (22kt Gold)	13 801 809-46
	Champagne (22kt Gold)	13 801 809-47

Required article

Rough-in adapter -

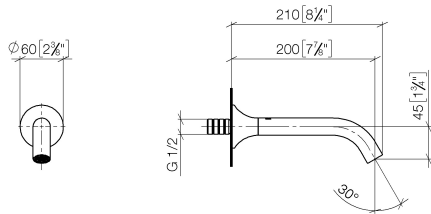
35 080 970-90
0010



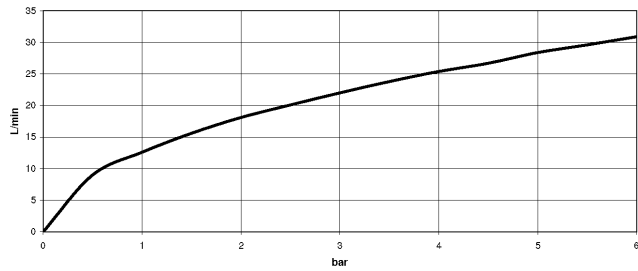
VAIA Tub spout for wall-mounted installation - Brushed Dark Platinum

13 801 809 Product version from 3/13/2017

mm [inches]



Flow rate chart



Codes & Standards

ASME
A112.18.1/CSA
B125.1

DIN 4109

ISO 3822

Scottish Water
Byelaws

UK Water Supply
Regulations

Ü-Zeichen



VAIA Tub spout for wall-mounted installation - Brushed Dark Platinum

13 801 809 Product version from 3/13/2017

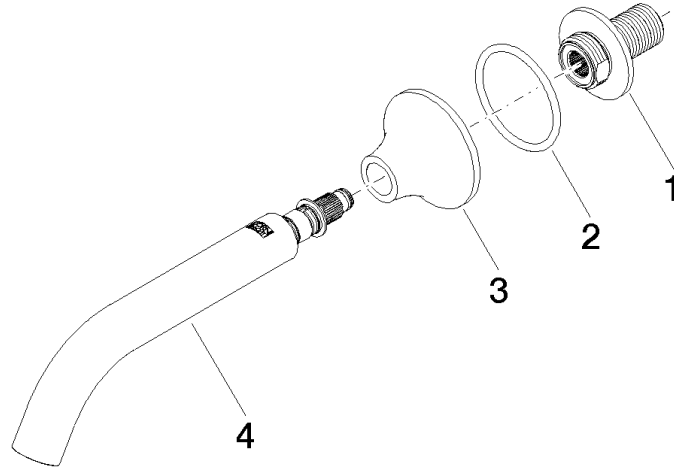
Certificates

WRAS_2306

LGA_29

VAIA Tub spout for wall-mounted installation - Brushed Dark Platinum

13 801 809 Product version from 3/13/2017



Spare parts list

Number	Item Number	Designation	Number of units	Lead time
1	09 24 03 269 90	nipple	1	2
2	09 14 10 084 90	seal	1	2
3	09 27 80 014-99	rosette	1	20
4	90 28 22 315 00-99	spout	1	20