



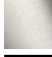






## LISSÉ Tub spout for wall-mounted installation - Dark Chrome

13 801 845 Product version from 3/9/2016



- 8-1/4" Projection
- Round aerator
- 1-1/2" hole diameter
- 1/2" connection
- Plug-in connection mounting
- Water flow rate limited to max. 5.7 gpm

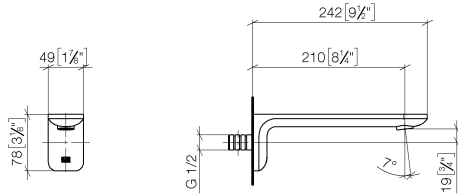
	Dark Chrome	13 801 845-19
	Chrome	13 801 845-00
	Brushed Platinum	13 801 845-06
	Brushed Light Gold	13 801 845-27
	Matte Black	13 801 845-33
	Brushed Chrome	13 801 845-93
	Brushed Dark Platinum	13 801 845-99



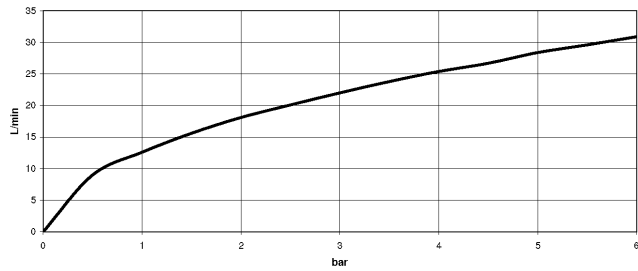
## LISSÉ Tub spout for wall-mounted installation - Dark Chrome

13 801 845 Product version from 3/9/2016

mm [inches]



### Flow rate chart



### Codes & Standards

ASME A112.18.1	ASME A112.18.1/CSA B125.1	cUPC	DIN 4109
ISO 3822	Scottish Water Byelaws	UK Water Supply Regulations	Ü-Zeichen



## LISSÉ Tub spout for wall-mounted installation - Dark Chrome

---

13 801 845 Product version from 3/9/2016

### Certificates

---

IAPMO\_4976

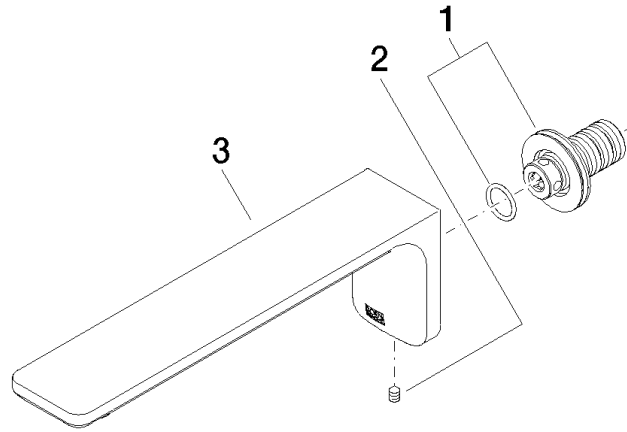
LGA\_29

WRAS\_2207

## LISSÉ Tub spout for wall-mounted installation - Dark Chrome

13 801 845 Product version from 3/9/2016

Parts for other finishes can be found here: [Chrome](#)



### Spare parts list

Number	Item Number	Designation	Number of units	Lead time
1	90 24 03 108 00 90	nipple set	1	2
2	90 31 11 004 00 90	pin	1	2
3	90 11 84 014 02-19	spout	1	20