

META Pillar tap cold water only - Chrome

META

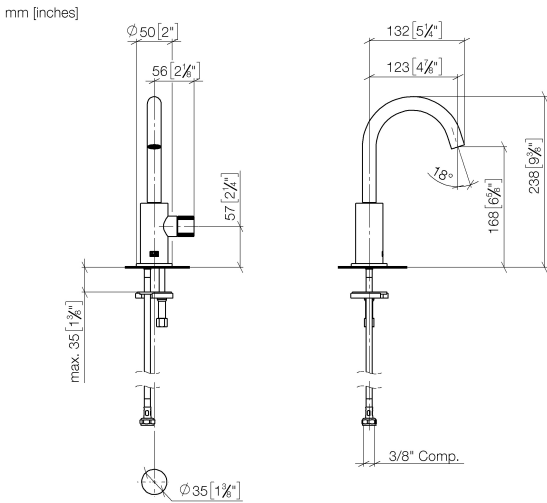
17 500 661 Product version from 7/1/2023




- 4-7/8" Projection
- Swiveling spout 360°
- Round aerated stream
- Total height 9-3/8"
- Height to aerator/spout outlet 6-5/8"
- 1-3/8" hole diameter
- 2 x pressure hose with 3/8" compression fitting
- Flange diameter 2"
- Water flow rate limited to max. 1.2 gpm
- lead-free
- This product can help a building meet the requirements of Green Building Rating Systems, e.g. LEED®, BREEAM®, DGNB

	Chrome	17 500 661-00 0010
	Brushed Platinum	17 500 661-06 0010
	Dark Chrome	17 500 661-19 0010
	Light gold	17 500 661-26 0010
	Brushed Light Gold	17 500 661-27 0010
	Matte Black	17 500 661-33 0010
	Brushed Dark Brass	17 500 661-39 0010
	Brushed Bronze	17 500 661-42 0010
	Brushed Champagne (22kt Gold)	17 500 661-46 0010
	Champagne (22kt Gold)	17 500 661-47 0010
	Brushed Chrome	17 500 661-93 0010
	Brushed Dark Platinum	17 500 661-99 0010

17 500 661 Product version from 7/1/2023

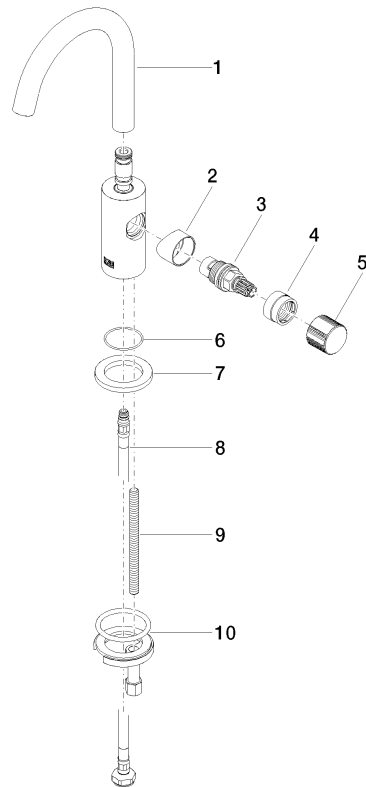


Codes & Standards

ASME A112.18.1	California Energy Commission (CEC)	cUPC	EPA WaterSense
NSF372	NSF61	WaterSense	

Certificates and sustainability

IAPMO_N-4	IAPMO_8834	IAPMO_4976	IAPMO_6
-----------	------------	------------	---------



Spare parts list

Number	Item Number	Designation	Number of units	Lead time
4	09 24 04 533-00	nut	1.00	60
6	09 14 10 202 90	seal	1.00	2
10	04 30 11 038 00 90	fixing set	1.00	2
7	09 27 66 006-00	rosette	1.00	10
8	04 30 04 102 00 90	Flexible supply line 3/8" -	1.00	2
9	09 31 11 012 90	pin	1.00	2
2	09 18 20 221-00	base	1.00	-
Spare part can no longer be ordered, please order the replacement item				
5	09 20 66 013-00	handle	1.00	10
1	90 28 22 312 01-00	spout	1.00	10
3	90 90 03 131 01 90	top	1.00	2