



TARA ULTRA HOT & COLD WATER DISPENSER - Brushed Champagne (22kt Gold)

TARA ULTRA

17 871 875 Product version from 3/1/2025



- 5-3/4" Projection
 - Swiveling spout 360°
 - Laminar stream
 - Total height 11-3/8"
 - 7-1/8" height to aerator/spout outlet
 - 1-3/8" hole diameter
 - Provides filtered, hot water, 199°F max. temperature
 - Provides filtered water
 - Water flow rate limited to max. 1 gpm
 - mechanical valve
 - lead-free
 - One lever for hot and cold water
 - This product can help a building meet the requirements of Green Building Rating Systems, e.g. LEED®, BREEAM®, DGNB
- Compatible with Insinkerator® hot water tank HWT300-F3000S. Tank and filter not supplied from Dornbracht. More information on tank and filter at www.insinkerator.com.
- Compatible with standard filtration systems or chillers with 1/4" compression connection e.g. Mountain Plumbing MT670-2.
- The installation must be above a kitchen sink.
- We recommend replacing the filter cartridge every six months. Please see the installation manual for more information.
- Specification and technical data sheets can be found on www.dornbracht.com/professional
- NOTE: Not compatible with Reverse Osmosis
- Adaptor hose kit 1252097090 available to be compatible with Mountain Plumbing hot water tank MT641-3 or similar product that uses the same fitting size and configuration without vent.
- Not compatible with reverse osmosis filtration

	Brushed Champagne (22kt Gold)	17 871 875-46
	Chrome	17 871 875-00
	Brushed Platinum	17 871 875-06
	Platinum	17 871 875-08
	Durabronze (23kt Gold)	17 871 875-09
	Dark Chrome	17 871 875-19
	Brushed Durabronze (23kt Gold)	17 871 875-28
	Matte Black	17 871 875-33
	Brushed Bronze	17 871 875-42
	Champagne (22kt Gold)	17 871 875-47
	Brushed Chrome	17 871 875-93
	Brushed Dark Platinum	17 871 875-99

Recommended article

Adapter 12 520 970 90

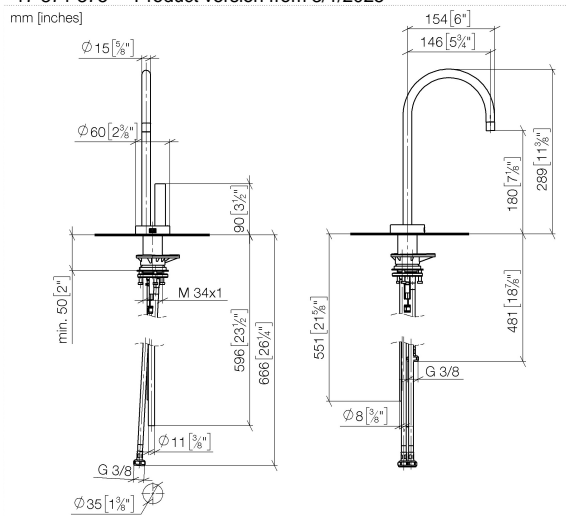


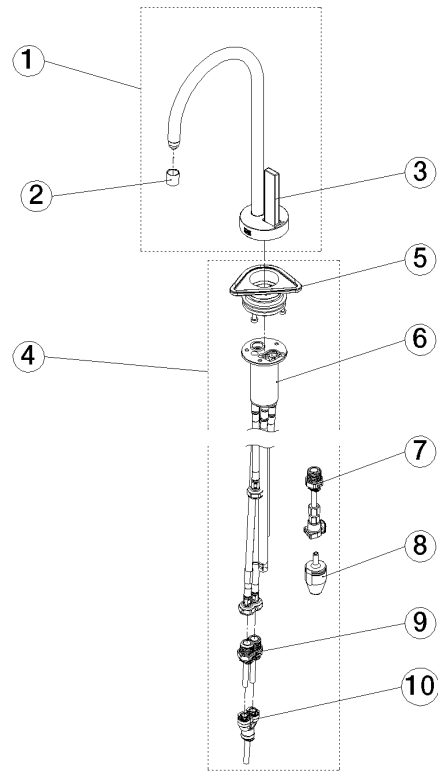
TARA ULTRA HOT & COLD WATER DISPENSER - Brushed Champagne (22kt Gold)

TARA ULTRA

17 871 875 Product version from 3/1/2025

mm [inches]





Spare parts list

Number	Item Number	Designation	Number of units	Lead time
1	90 17 87 187 50-46	spout	1.00	30
2	90 17 87 179 01 90	set	1.00	2