



TARA Deck valve clockwise-closing hot or cold - Brushed Durabronze (23kt Gold)

20 000 892

- 1-1/4" hole diameter
- Flange diameter 2-1/8"

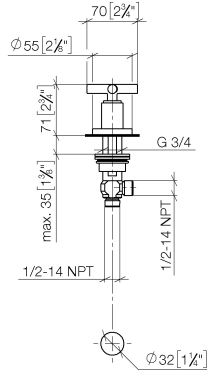


	Brushed Durabronze (23kt Gold)	20 000 892-28
	Chrome	20 000 892-00
	Brushed Platinum	20 000 892-06
	Platinum	20 000 892-08
	Dark Chrome	20 000 892-19
	Matte Black	20 000 892-33
	Brushed Bronze	20 000 892-42
	Brushed Champagne (22kt Gold)	20 000 892-46
	Champagne (22kt Gold)	20 000 892-47
	Brushed Chrome	20 000 892-93
	Brushed Dark Platinum	20 000 892-99

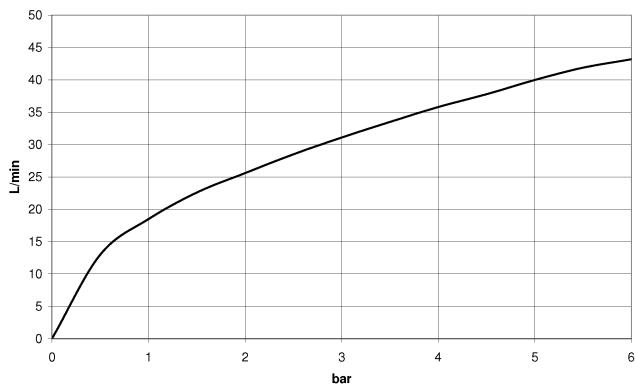


TARA Deck valve clockwise-closing hot or cold - Brushed Durabronz (23kt Gold)

20 000 892
mm [inches]



Flow rate chart



Codes & Standards

ADA

ASME
A112.18.1/CSA
B125.1

Scottish Water
Byelaws

UK Water Supply
Regulations



TARA Deck valve clockwise-closing hot or cold - Brushed Durabronz (23kt Gold)

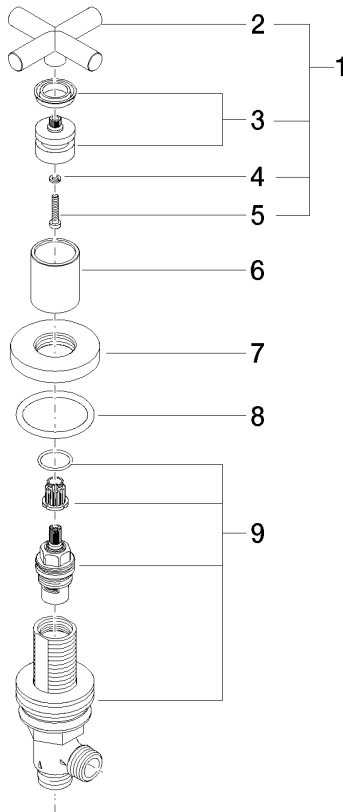
20 000 892

Certificates

WRAS_2112

TARA Deck valve clockwise-closing hot or cold - Brushed Durabronz (23kt Gold)

20 000 892
Parts for other
finishes can be found
here: Chrome



Spare parts list

Number	Item Number	Designation	Number of units	Lead time
1	90 20 89 010 10-28	handle	1	20
2	09 20 89 010-28	handle	1	60
3	90 12 12 007 00-28	base	1	20
4	90 30 11 029 00 90	disc	1	2
5	90 30 30 075 00 90	screw	1	2
6	09 21 02 140-28	sleeve	1	20
7	09 27 89 105-28	rosette	1	20
8	90 14 10 043 00 90	seal	1	2
9	90 17 11 040 31 90	side panel	1	2