

## TARA Three-hole lavatory mixer with drain - Platinum

TARA

20 710 882 Product version from 6/30/2009 to 6/25/2021



- 5-3/8" Projection
- US drain with overflow
- Swiveling spout 360°
- Round aerated stream
- Total height 10-5/8"
- Height to aerator/spout outlet 6-3/8"
- Valve hole diameter 1-1/4"
- Spout hole diameter 1-3/8"
- Flange diameter 2-1/8"
- 2x 3/8" flexible supply lines
- Water flow rate limited to max. 1.2 gpm
- lead-free
- This product can help a building meet the requirements of Green Building Rating Systems, e.g. LEED®, BREEAM®, DGNB

(ADA)

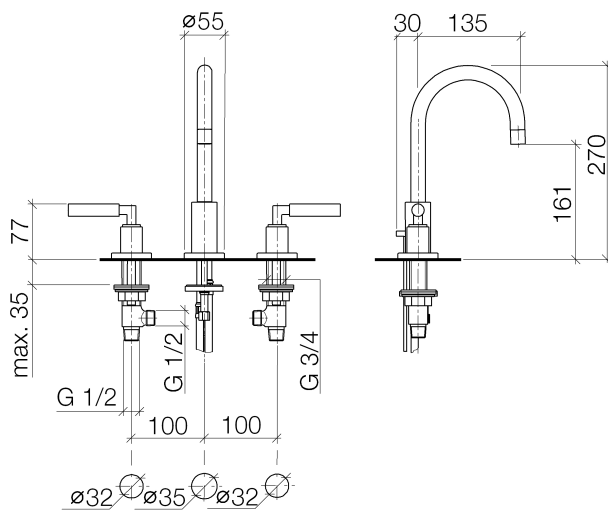
Suitable only for basins with overflow.

	Platinum	20 710 882-08 0010
	Chrome	20 710 882-00 0010
	Brushed Platinum	20 710 882-06 0010
	Dark Chrome	20 710 882-19 0010
	Brushed Durabronze (23kt Gold)	20 710 882-28 0010
	Matte Black	20 710 882-33 0010
	Brushed Dark Brass	20 710 882-39 0010
	Brushed Bronze	20 710 882-42 0010
	Brushed Champagne (22kt Gold)	20 710 882-46 0010
	Champagne (22kt Gold)	20 710 882-47 0010
	Brushed Chrome	20 710 882-93 0010
	Brushed Dark Platinum	20 710 882-99 0010

## TARA Three-hole lavatory mixer with drain - Platinum

TARA

20 710 882 Product version from 6/30/2009 to 6/25/2021



### Codes & Standards

ADA	ASME A112.18.1	California Energy Commission (CEC)	cUPC
EPA WaterSense	NSF372	NSF61	WaterSense



### Certificates and sustainability

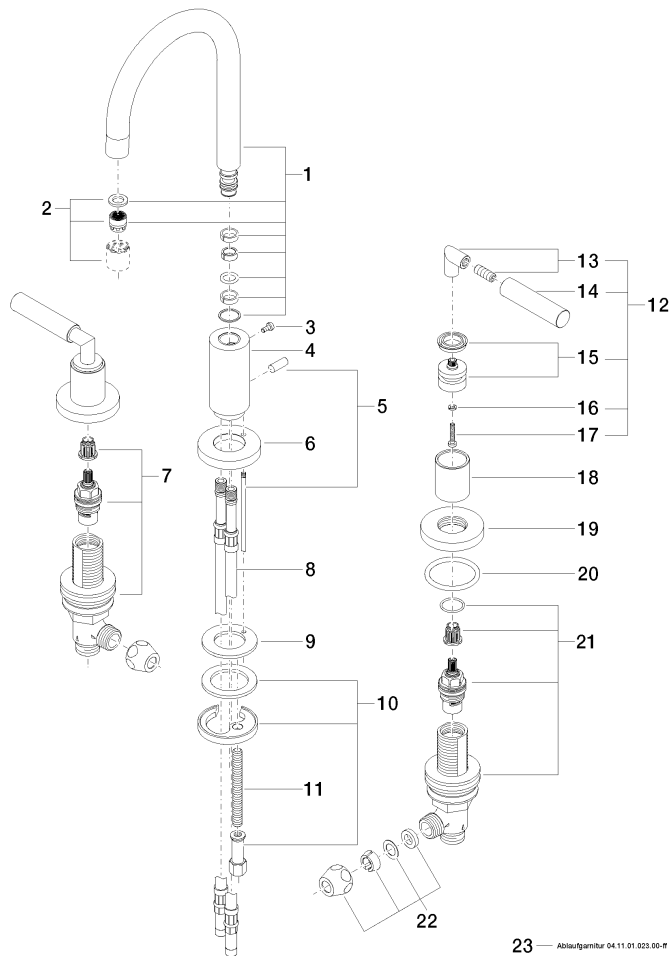
IAPMO_N-4	IAPMO_8834	IAPMO_4976	IAPMO_6
-----------	------------	------------	---------

## TARA Three-hole lavatory mixer with drain - Platinum

TARA

20 710 882 Product version from 6/30/2009 to 6/25/2021

Parts for other  
finishes can be found  
here: [Chrome](#)



23 — Ablaufgarnitur 04.11.01.023.00-IT