

META Three-hole lavatory mixer with drain - Chrome

META

20 713 661 Product version from 7/1/2023



- 6-5/8" Projection
- US drain with overflow
- Swiveling spout 360°
- Round aerated stream
- Total height 11"
- Height to aerator/spout outlet 7-1/2"
- Valve hole diameter 1-1/4"
- Spout hole diameter 1-3/8"
- Flange diameter 2-3/8"
- 2x 3/8" flexible supply lines
- Water flow rate limited to max. 1.2 gpm
- lead-free
- This product can help a building meet the requirements of Green Building Rating Systems, e.g. LEED®, BREEAM®, DGNB

(ADA)

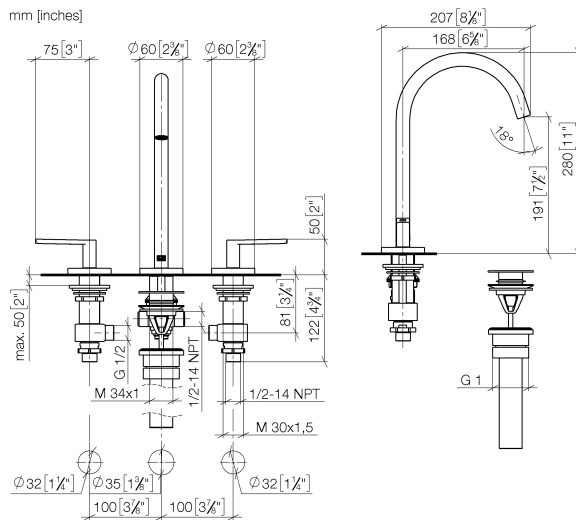
Suitable only for basins with overflow.

	Chrome	20 713 661-00 0010
	Brushed Platinum	20 713 661-06 0010
	Dark Chrome	20 713 661-19 0010
	Light gold	20 713 661-26 0010
	Brushed Light Gold	20 713 661-27 0010
	Matte Black	20 713 661-33 0010
	Brushed Dark Brass	20 713 661-39 0010
	Brushed Bronze	20 713 661-42 0010
	Brushed Champagne (22kt Gold)	20 713 661-46 0010
	Champagne (22kt Gold)	20 713 661-47 0010
	Brushed Chrome	20 713 661-93 0010
	Brushed Dark Platinum	20 713 661-99 0010

META Three-hole lavatory mixer with drain - Chrome

META

20 713 661 Product version from 7/1/2023



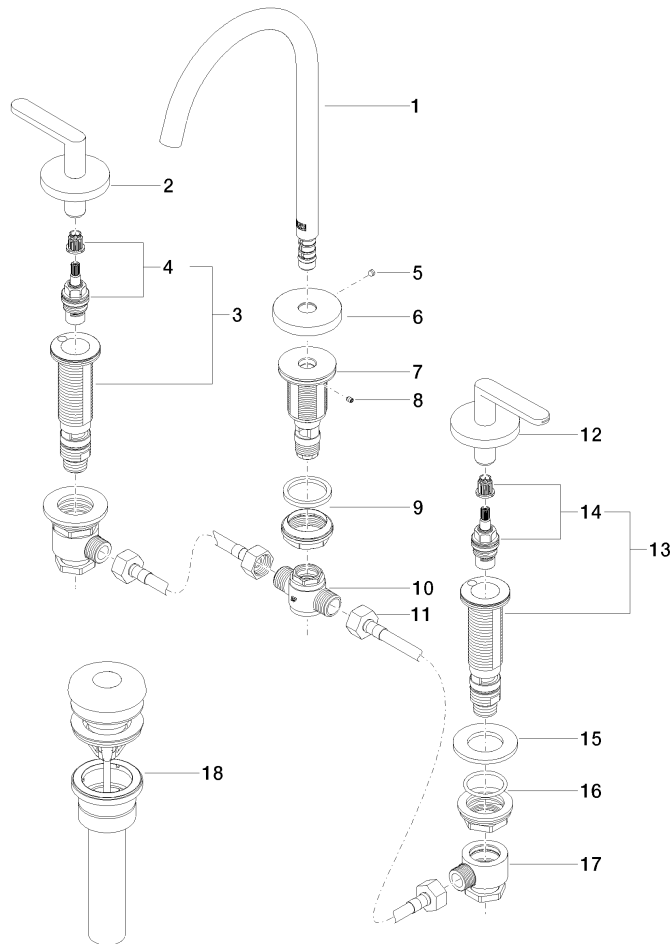
Codes & Standards

ADA	ASME A112.18.1	California Energy Commission (CEC)	cUPC
EPA WaterSense	NSF372	NSF61	WaterSense



Certificates and sustainability

IAPMO_8834	IAPMO_N-4	IAPMO_4976	IAPMO_6
------------	-----------	------------	---------



Spare parts list

Number	Item Number	Designation	Number of units	Lead time
11	04 30 04 096 00 90	hose	2.00	2
17	04 17 11 023 10 90	distributor	2.00	2
3	04 17 11 058 32 90	side panel	1.00	2
9	04 23 10 044 07 90	fixing set	1.00	2
15	09 30 11 099 90	disc	2.00	2
7	09 30 01 287 90	connection	1.00	60
1	90 28 22 325 01-00	spout	1.00	10
6	09 27 66 002-00	rosette	1.00	60
12	90 20 66 015 00-00	handle (cold)	1.00	10
16	04 23 10 032 78 90	fixing set	2.00	2
5	09 31 11 112 90	pin	1.00	60
2	90 20 66 016 00-00	handle (hot)	1.00	10
8	09 31 11 044 90	pin	1.00	2
13	04 17 11 058 33 90	side panel	1.00	2
18	10 125 970-00 0010	Umbrella drain 1 1/4" - Chrome	1.00	2
14	90 90 03 132 00 90	top	1.00	2
4	90 90 03 133 00 90	top	1.00	2
10	90 17 11 020 10 90	distributor	1.00	2