

META Three-hole lavatory mixer with drain - Light gold

META

20 713 661 Product version from 7/1/2023



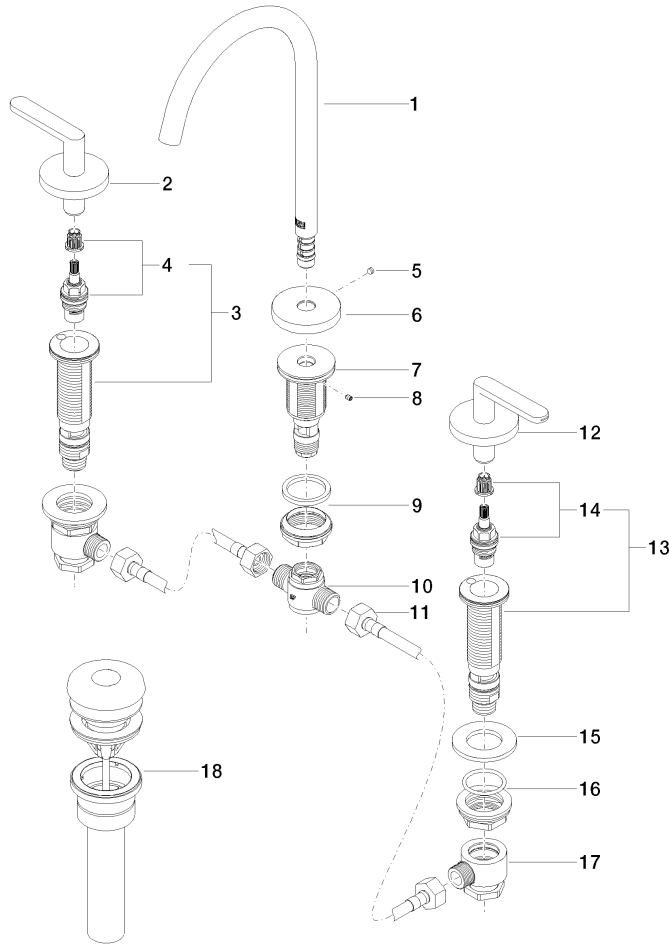
- 6-5/8" Projection
- US drain with overflow
- Swiveling spout 360°
- Round aerated stream
- Total height 11"
- Height to aerator/spout outlet 7-1/2"
- Valve hole diameter 1-1/4"
- Spout hole diameter 1-3/8"
- Flange diameter 2-3/8"
- 2x 3/8" flexible supply lines
- Water flow rate limited to max. 1.2 gpm
- lead-free
- This product can help a building meet the requirements of Green Building Rating Systems, e.g. LEED®, BREEAM®, DGNB

(ADA)

Suitable only for basins with overflow.

	Light gold	20 713 661-26 0010
	Chrome	20 713 661-00 0010
	Brushed Platinum	20 713 661-06 0010
	Dark Chrome	20 713 661-19 0010
	Brushed Light Gold	20 713 661-27 0010
	Matte Black	20 713 661-33 0010
	Brushed Dark Brass	20 713 661-39 0010
	Brushed Bronze	20 713 661-42 0010
	Brushed Champagne (22kt Gold)	20 713 661-46 0010
	Champagne (22kt Gold)	20 713 661-47 0010
	Brushed Chrome	20 713 661-93 0010
	Brushed Dark Platinum	20 713 661-99 0010

Parts for other
finishes can be found
here: [Chrome](#)



Spare parts list

Number	Item Number	Designation	Number of units	Lead time
	13 04 17 11 058 33 90	side panel	1.00	2
	10 90 17 11 020 10 90	distributor	1.00	2
	12 90 20 66 015 00-26	handle (cold)	1.00	30
	1 90 28 22 325 01-26	spout	1.00	30
	18 10 125 970-26 0010	Umbrella drain 1 1/4" - Light gold	1.00	30
	14 90 90 03 132 00 90	top	1.00	2
	16 04 23 10 032 78 90	fixing set	2.00	2
	4 90 90 03 133 00 90	top	1.00	2
	6 09 27 66 002-26	rosette	1.00	60
	2 90 20 66 016 00-26	handle (hot)	1.00	30
	9 04 23 10 044 07 90	fixing set	1.00	2
	7 09 30 01 287 90	connection	1.00	60
	3 04 17 11 058 32 90	side panel	1.00	2
	8 09 31 11 044 90	pin	1.00	2
	17 04 17 11 023 10 90	distributor	2.00	2
	15 09 30 11 099 90	disc	2.00	2
	5 09 31 11 112 90	pin	1.00	60
	11 04 30 04 096 00 90	hose	2.00	2