

## LULU Three-hole lavatory mixer with drain - Chrome

LULU

20 713 710 Product version from 8/31/2015 to 7/22/2021



- 6-1/8" Projection
- Rigid spout
- US drain with overflow
- Round aerated stream
- Total height 4-1/2"
- Height to aerator/spout outlet 3-1/2"
- Valve hole diameter 1-1/4"
- Spout hole diameter 1-3/8"
- Flange 1-7/8" x 2-1/8"
- 2x 3/8" flexible supply lines
- Water flow rate limited to max. 1.2 gpm
- lead-free
- This product can help a building meet the requirements of Green Building Rating Systems, e.g. LEED®, BREEAM®, DGNB

(ADA)

Suitable only for basins with overflow.



Chrome

20 713 710-00 0010



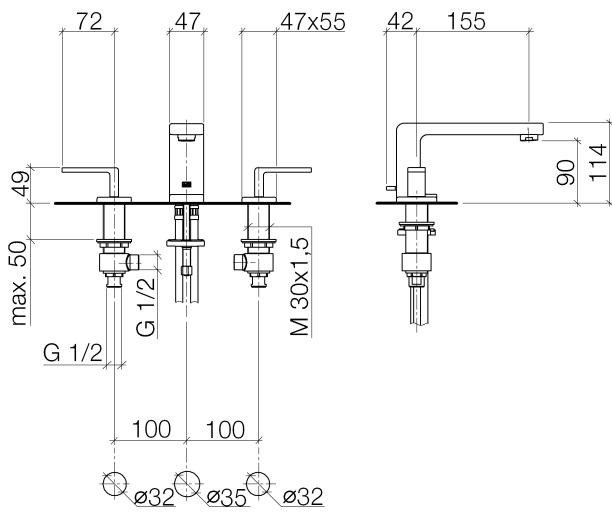
Brushed Platinum

20 713 710-06 0010

**LULU Three-hole lavatory mixer with drain - Chrome**

LULU

20 713 710 Product version from 8/31/2015 to 7/22/2021



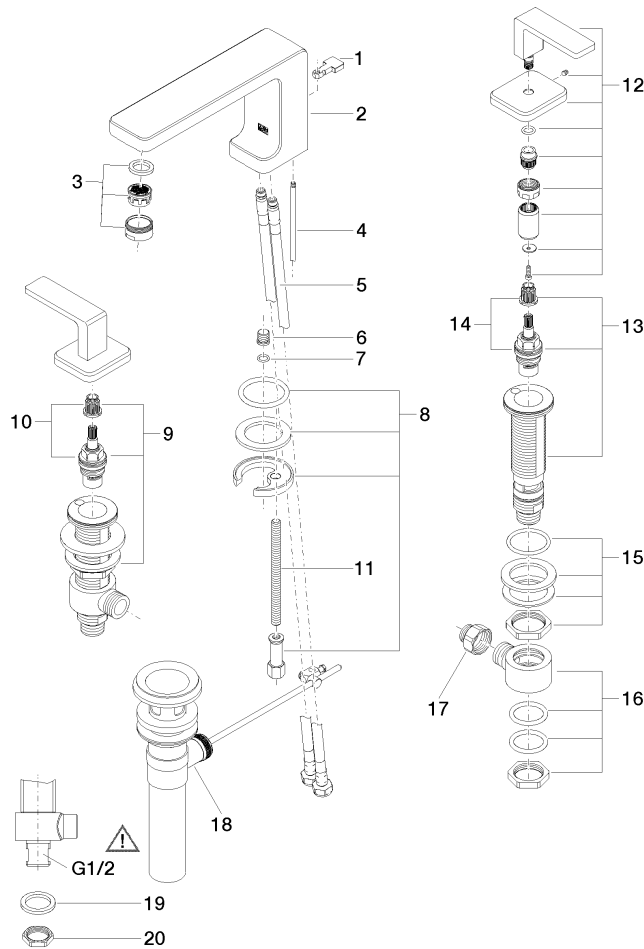
**Codes & Standards**

ADA	ASME A112.18.1	California Energy Commission (CEC)	cUPC
EPA WaterSense	NSF372	NSF61	WaterSense



**Certificates and sustainability**

IAPMO_8834	IAPMO_N-4	IAPMO_4976	IAPMO_6
------------	-----------	------------	---------



## Spare parts list

Number	Item Number	Designation	Number of units	Lead time
6	09 31 20 065 90	plug	1.00	2
9	04 17 11 058 53 90	side panel	1.00	2
11	09 31 11 012 90	pin	1.00	2
4	09 31 09 080-00	pull-rod	1.00	10
15	04 23 10 032 78 90	fixing set	2.00	2
12	90 20 71 046 01-00	handle	2.00	10
2	09 11 71 095 10-00	spout	1.00	10
8	04 30 11 038 75 90	fixing set	1.00	2
1	09 20 71 033-00	handle	1.00	10
3	90 23 01 118 04-00	aerator	1.00	10
13	04 17 11 058 52 90	side panel	1.00	2
16	04 17 11 023 10 90	distributor	2.00	2
10	90 90 03 153 00 90	top	1.00	2
14	90 90 03 152 00 90	top	1.00	2
18	90 11 01 023 00-00	pop-up waste	1.00	10
17	09 24 03 185-00	nipple	2.00	10
20	09 23 10 012 90	nut	2.00	2
19	09 30 11 059 90	disc	2.00	2
7	90 14 10 060 00 90	seal	1.00	2
5	04 30 04 100 00 90	hose	2.00	2