



CYO Three-hole lavatory mixer with drain - Durabrand / Brushed Durabrand  
(23kt Gold)







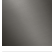
CYO

20 713 811



- 6-5/8" Projection
- US drain with overflow
- Rigid spout
- Rectangular aerated stream
- Total height 7-3/4"
- Height to aerator/spout outlet 5-1/4"
- Spout hole diameter 1-3/8"
- Valve hole diameter 1-1/4"
- Handle Ø 2-3/8"
- Water flow rate limited to max. 1.2 gpm
- lead-free
- This product can help a building meet the requirements of Green Building Rating Systems, e.g. LEED®, BREEAM®, DGNB

NOTE: Handle inserts are sold separately!

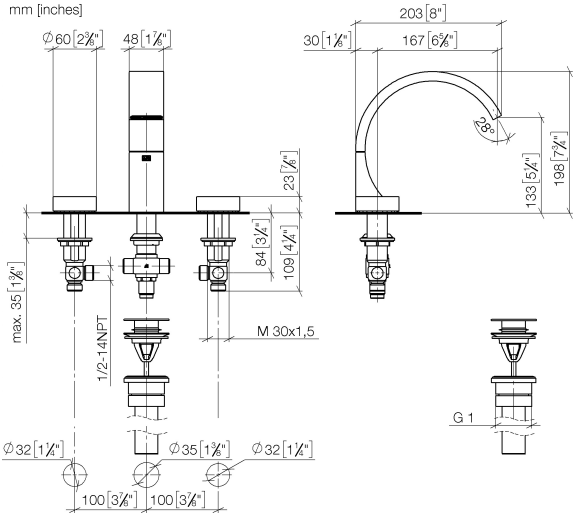
	Durabrand / Brushed Durabrand (23kt Gold)	20 713 811-38 0010
	Chrome	20 713 811-00 0010
	Brushed Platinum	20 713 811-06 0010
	Dark Chrome	20 713 811-19 0010
	Brushed Durabrand (23kt Gold)	20 713 811-28 0010
	Platinum / Brushed Platinum	20 713 811-36 0010
	Brushed Dark Platinum	20 713 811-99 0010



CYO Three-hole lavatory mixer with drain - Durabronss / Brushed Durabronss  
(23kt Gold)

CYO

20 713 811  
mm [inches]



Codes & Standards

California Energy Commission (CEC)	NSF372	NSF61
--	--------	-------

Certificates and sustainability

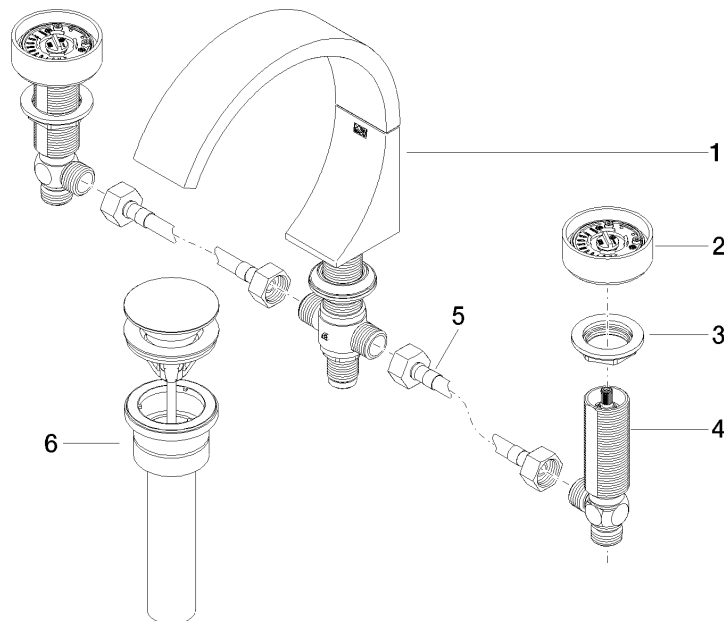
IAPMO_N-4	IAPMO_6
-----------	---------

## CYO Three-hole lavatory mixer with drain - Durabronss / Brushed Durabronss (23kt Gold)

CYO

20 713 811

Parts for other  
finishes can be found  
here: Chrome



### Spare parts list

Number	Item Number	Designation	Number of units	Lead time
3	04 30 11 038 67 90	fixing set	2.00	2
6	10 125 970-38 0010	pop-up waste	1.00	-
Spare part can no longer be ordered, please order the replacement item				
4	04 17 11 055 61 90	side panel	2.00	2
1	13 717 811-38	CYO Lavatory spout, deck-mounted without drain - Durabronss / Brushed Durabronss (23kt Gold)	1.00	20
2	90 18 40 290 00-38	handle	2.00	20
5	04 30 04 096 00 90	hose	2.00	2