

## TARA Three-hole lavatory mixer with drain - Brushed Champagne (22kt Gold)

TARA

20 713 892 Product version from 6/30/2009



- 6-1/2" Projection
- US drain with overflow
- Swiveling spout 360°
- Round aerated stream
- Total height 11-1/4"
- Height to aerator/spout outlet 6-3/8"
- Valve hole diameter 1-1/4"
- Spout hole diameter 1-3/8"
- Flange diameter 2-1/8"
- 2x 3/8" flexible supply lines
- Water flow rate limited to max. 1.2 gpm
- lead-free
- This product can help a building meet the requirements of Green Building Rating Systems, e.g. LEED®, BREEAM®, DGNB

(ADA)

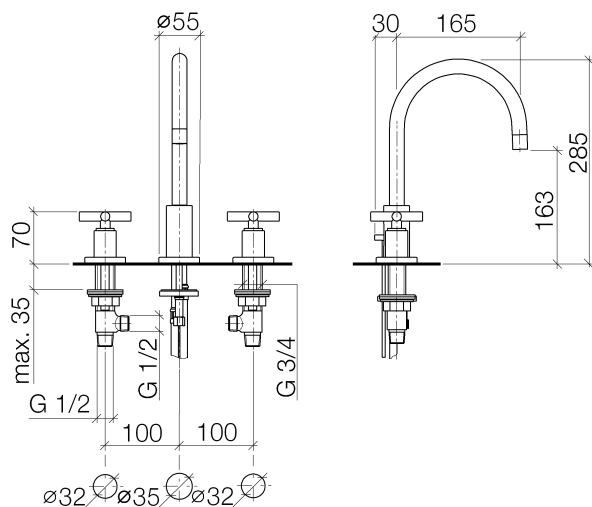
Suitable only for basins with overflow.

	Brushed Champagne (22kt Gold)	20 713 892-46 0010
	Chrome	20 713 892-00 0010
	Brushed Platinum	20 713 892-06 0010
	Platinum	20 713 892-08 0010
	Dark Chrome	20 713 892-19 0010
	Brushed Durabronze (23kt Gold)	20 713 892-28 0010
	Matte Black	20 713 892-33 0010
	Brushed Dark Brass	20 713 892-39 0010
	Brushed Bronze	20 713 892-42 0010
	Champagne (22kt Gold)	20 713 892-47 0010
	Brushed Chrome	20 713 892-93 0010
	Brushed Dark Platinum	20 713 892-99 0010

## TARA Three-hole lavatory mixer with drain - Brushed Champagne (22kt Gold)

TARA

20 713 892 Product version from 6/30/2009



### Codes & Standards

ADA	ASME A112.18.1	California Energy Commission (CEC)	cUPC
EPA WaterSense	NSF372	NSF61	WaterSense

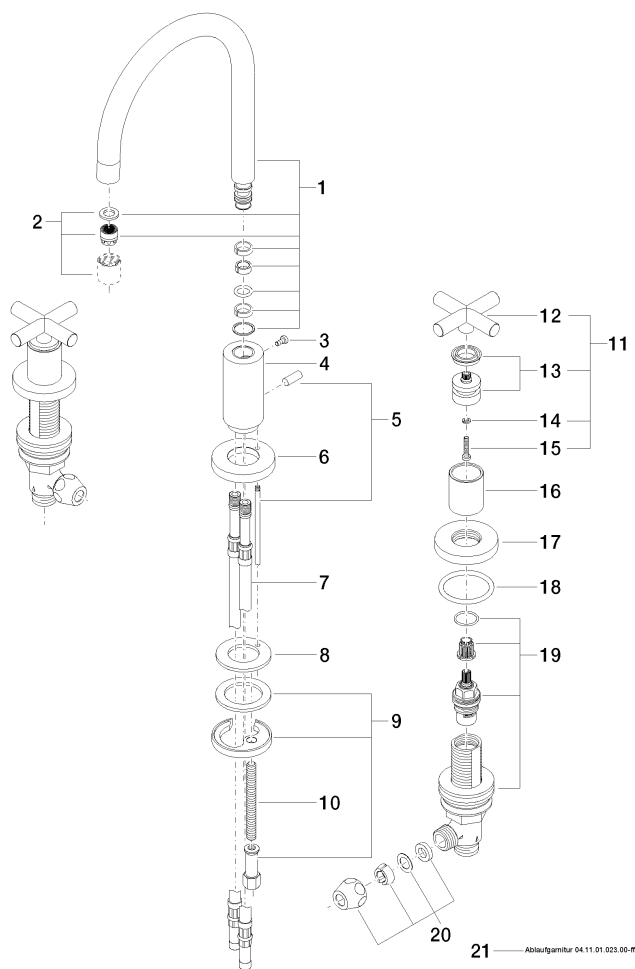


### Certificates and sustainability

IAPMO_8834	IAPMO_N-4	IAPMO_4976	IAPMO_6
------------	-----------	------------	---------

20 713 892 Product version from 6/30/2009

Parts for other  
finishes can be found  
here: [Chrome](#)





## TARA Three-hole lavatory mixer with drain - Brushed Champagne (22kt Gold)

TARA

20 713 892 Product version from 6/30/2009

### Spare parts list

Number	Item Number	Designation	Number of units	Lead time
2	90 23 01 028 04-46	aerator	1.00	30
12	09 20 89 010-46	handle	2.00	30
8	09 14 05 047 90	seal	1.00	2
5	04 20 89 030 80-46	pull-rod	1.00	30
13	90 12 12 007 00-46	base	2.00	30
17	09 27 89 105-46	rosette	2.00	60
16	09 21 02 140-46	sleeve	2.00	60
1	90 28 22 213 02-46	spout	1.00	30
19	90 17 11 040 51 90	side panel	2.00	2
9	04 30 11 038 00 90	fixing set	1.00	2
3	09 30 30 057 90	screw	1.00	2
6	09 28 10 133-46	ring	1.00	30
10	09 31 11 011 90	pin	1.00	2
7	04 30 04 019 00 90	hose	2.00	2
4	09 11 10 087 10-46	connection	1.00	30
15	90 30 30 075 00 90	screw	2.00	2
21	90 11 01 023 00-46	pop-up waste	1.00	30
11	90 20 89 010 10-46	handle	2.00	30
14	90 30 11 029 00 90	disc	2.00	2
18	90 14 10 043 00 90	seal	2.00	2
20	90 23 30 040 00-46	threaded connector	2.00	-

Spare part can no longer be ordered, please order the replacement item