

## TARA Single-hole lavatory mixer with drain - Brushed Platinum

TARA

22 512 892 Product version from 6/30/2009 to 5/27/2021



- 5-3/8" Projection
- US drain with overflow
- Swiveling spout 360°
- Round aerated stream
- Total height 10-7/8"
- Height to aerator/spout outlet 6-5/8"
- 1-3/8" hole diameter
- Flange diameter 2-3/8"
- 2 x pressure hose with 3/8" compression fitting
- Water flow rate limited to max. 1.2 gpm
- lead-free
- This product can help a building meet the requirements of Green Building Rating Systems, e.g. LEED®, BREEAM®, DGNB

(ADA)

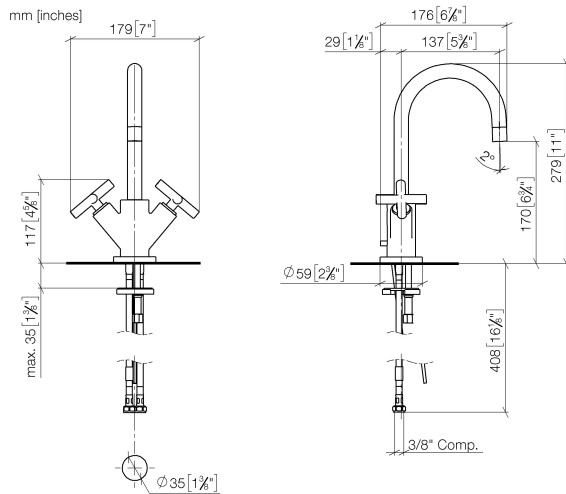
Suitable only for basins with overflow.

	Brushed Platinum	22 512 892-06 0010
	Chrome	22 512 892-00 0010
	Platinum	22 512 892-08 0010
	Dark Chrome	22 512 892-19 0010
	Brushed Durabronze (23kt Gold)	22 512 892-28 0010
	Matte Black	22 512 892-33 0010
	Brushed Dark Brass	22 512 892-39 0010
	Brushed Bronze	22 512 892-42 0010
	Brushed Champagne (22kt Gold)	22 512 892-46 0010
	Champagne (22kt Gold)	22 512 892-47 0010
	Brushed Chrome	22 512 892-93 0010
	Brushed Dark Platinum	22 512 892-99 0010

## TARA Single-hole lavatory mixer with drain - Brushed Platinum

TARA

22 512 892 Product version from 6/30/2009 to 5/27/2021



### Codes & Standards

ADA	ASME A112.18.1	California Energy Commission (CEC)	cUPC
EPA WaterSense	NSF372	NSF61	WaterSense



### Certificates and sustainability

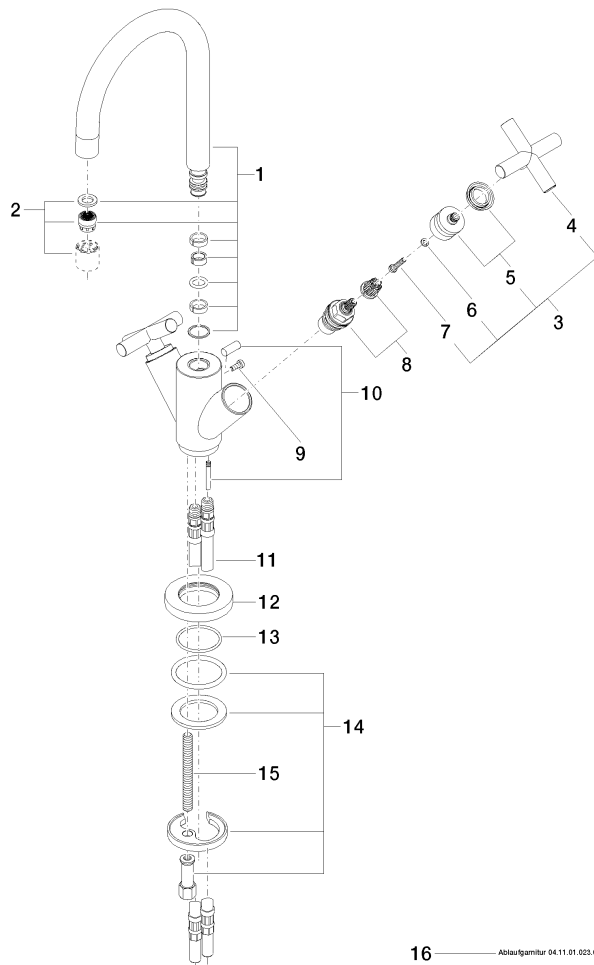
IAPMO_4976	IAPMO_8834	IAPMO_N-4	IAPMO_6
------------	------------	-----------	---------

## TARA Single-hole lavatory mixer with drain - Brushed Platinum

TARA

22 512 892 Product version from 6/30/2009 to 5/27/2021

Parts for other  
finishes can be found  
here: [Chrome](#)



16 Abbaufamilie 04.11.01.023.00-ff

### Spare parts list

Number	Item Number	Designation	Number of units	Lead time
8	90 90 03 151 00 90	top	2.00	2
12	09 28 10 132-06	ring	1.00	10
15	09 31 11 011 90	pin	1.00	2
13	09 14 10 134 90	seal	1.00	2
10	04 20 89 035 80-06	pull-rod	1.00	10
14	04 30 11 038 00 90	fixing set	1.00	2
2	90 23 01 028 04-06	aerator	1.00	10
11	04 30 04 045 00 90	hose	2.00	2
1	90 28 22 217 02-06	spout	1.00	10
5	90 12 12 007 00-06	base	2.00	10
9	09 30 30 054 90	screw	1.00	2
4	09 20 89 010-06	handle	2.00	60
6	90 30 11 029 00 90	disc	2.00	2
3	90 20 89 010 10-06	handle	2.00	10
7	90 30 30 075 00 90	screw	2.00	2
16	90 11 01 023 00-06	pop-up waste	1.00	10