

## TARA Single-hole lavatory mixer with drain - Brushed Dark Brass

TARA

22 512 892 Product version from 5/27/2021



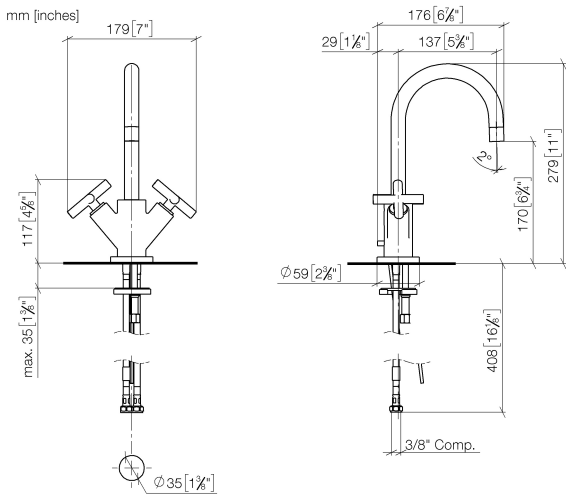
- 5-3/8" Projection
- US drain with overflow
- Swiveling spout 360°
- Round aerated stream
- Total height 10-7/8"
- Height to aerator/spout outlet 6-5/8"
- 1-3/8" hole diameter
- Flange diameter 2-3/8"
- 2 x pressure hose with 3/8" compression fitting
- Water flow rate limited to max. 1.2 gpm
- lead-free
- This product can help a building meet the requirements of Green Building Rating Systems, e.g. LEED®, BREEAM®, DGNB

(ADA)

Suitable only for basins with overflow.

	Brushed Dark Brass	22 512 892-39 0010
	Chrome	22 512 892-00 0010
	Brushed Platinum	22 512 892-06 0010
	Platinum	22 512 892-08 0010
	Dark Chrome	22 512 892-19 0010
	Brushed Durabronze (23kt Gold)	22 512 892-28 0010
	Matte Black	22 512 892-33 0010
	Brushed Bronze	22 512 892-42 0010
	Brushed Champagne (22kt Gold)	22 512 892-46 0010
	Champagne (22kt Gold)	22 512 892-47 0010
	Brushed Chrome	22 512 892-93 0010
	Brushed Dark Platinum	22 512 892-99 0010

22 512 892 Product version from 5/27/2021



**Codes & Standards**

ADA	California Energy Commission (CEC)	NSF372	NSF61
-----	------------------------------------	--------	-------

**Certificates and sustainability**

IAPMO_N-4	IAPMO_6
-----------	---------

22 512 892 Product version from 5/27/2021

Parts for other  
finishes can be found  
here: [Chrome](#)

