

IMO Single-hole lavatory mixer with stand pipe without drain - Dark Chrome



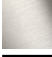



IMO

22 585 671 Product version from 4/1/2024



- 7-5/8" Projection
 - Rigid spout
 - Rectangular aerated stream
 - Total height 40-7/8" - 43-3/8"
 - Height to aerator/spout outlet 38-1/4" - 41"
 - Flange diameter 5-3/8"
 - Water flow rate limited to max. 1.2 gpm
 - lead-free
 - This product can help a building meet the requirements of Green Building Rating Systems, e.g. LEED®, BREEAM®, DGNB
- (ADA)**

(ADA)

| | | |
|---|-----------------------|--------------------|
|  | Dark Chrome | 22 585 671-19 0010 |
|  | Chrome | 22 585 671-00 0010 |
|  | Brushed Platinum | 22 585 671-06 0010 |
|  | Matte Black | 22 585 671-33 0010 |
|  | Brushed Chrome | 22 585 671-93 0010 |
|  | Brushed Dark Platinum | 22 585 671-99 0010 |

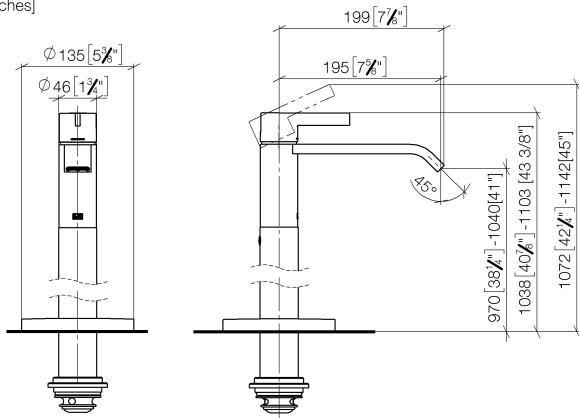
Required article



- Floor mounting rough set -** 35 949 970-90
- Min. rough in depth 3-1/8" 0010
 - Max. rough in depth 5-7/8"

22 585 671 Product version from 4/1/2024

mm [inches]



Codes & Standards

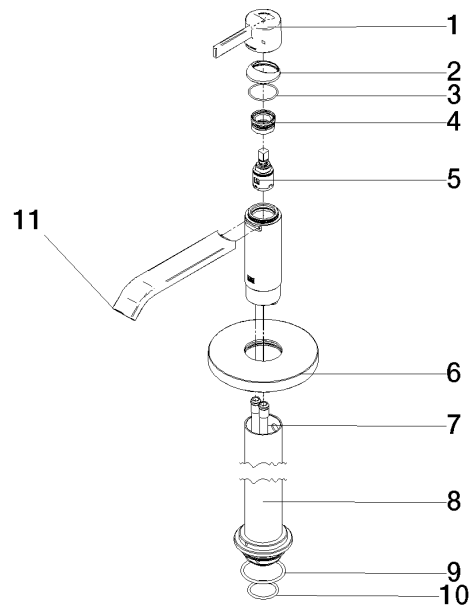
ADA ASME A112.18.1 cUPC EPA WaterSense

NSF372 NSF61 WaterSense



Certificates and sustainability

IAPMO_N-4976 IAPMO_6397 IAPMO_8834 IAPMO_4976 (



Spare parts list

| Number | Item Number | Designation | Number of units | Lead time |
|--|-----------------------|-------------|-----------------|-----------|
| | 10 09 14 10 018 90 | seal | 1.00 | 2 |
| | 3 09 14 10 102 90 | seal | 1.00 | 2 |
| | 8 90 28 22 574 00-19 | pipe | 1.00 | 20 |
| | 6 09 27 88 005-19 | rosette | 1.00 | 20 |
| | 7 04 28 22 022 10 90 | connection | 2.00 | 2 |
| | 1 90 20 67 019 00-19 | handle | 1.00 | 20 |
| | 5 90 15 05 042 00 90 | cartridge | 1.00 | 2 |
| | 11 90 28 22 407 00-19 | spout | 1.00 | 20 |
| | 4 90 23 10 146 00 90 | nut | 1.00 | 2 |
| | 2 90 28 30 059 00-19 | cover | 1.00 | - |
| Spare part can no longer be ordered, please order the replacement item | | | | |
| | 9 09 14 10 084 90 | seal | 1.00 | 2 |