

## VAIA Single-hole lavatory mixer with stand pipe without drain - Chrome

VAIA


22 585 809



- 8" Projection
- Swiveling spout 360°
- Round aerated stream
- Total height 49-1/4" - 52"
- Height to aerator/spout outlet 45-3/8" - 48-1/8"
- Flange diameter 5-3/8"
- Water flow rate limited to max. 1.2 gpm
- lead-free
- This product can help a building meet the requirements of Green Building Rating Systems, e.g. LEED®, BREEAM®, DGNB

**(ADA)**

(ADA)

	Chrome	22 585 809-00 0010
	Brushed Platinum	22 585 809-06 0010
	Platinum	22 585 809-08 0010
	Dark Chrome	22 585 809-19 0010
	Brushed Durabronze (23kt Gold)	22 585 809-28 0010
	Brushed Bronze	22 585 809-42 0010
	Brushed Champagne (22kt Gold)	22 585 809-46 0010
	Champagne (22kt Gold)	22 585 809-47 0010
	Brushed Dark Platinum	22 585 809-99 0010

### Required article



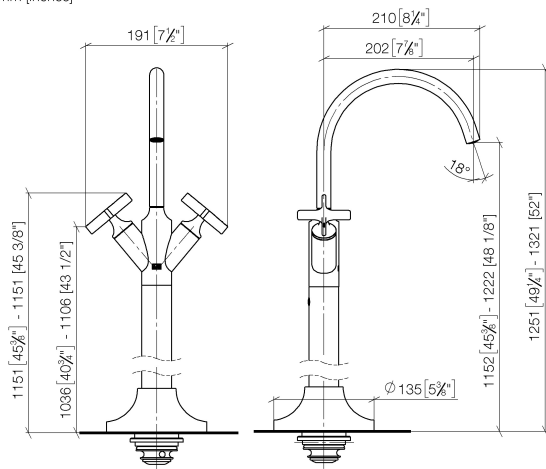
#### Floor mounting rough set -

- Max. rough in depth 5-7/8"
- Min. rough in depth 3-1/8"

35 949 970-90  
0010

22 585 809

mm [inches]



#### Codes & Standards

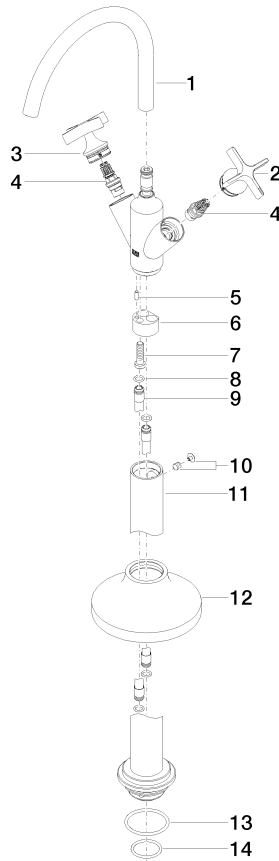
ADA	ASME A112.18.1	California Energy Commission (CEC)	cUPC
EPA WaterSense	NSF372	NSF61	WaterSense



#### Certificates and sustainability

IAPMO_4976	IAPMO_8834	IAPMO_6397	IAPMO_N-4976
------------	------------	------------	--------------

22 585 809



## Spare parts list

Number	Item Number	Designation	Number of units	Lead time
10	04 31 11 002 00 90	pin	1.00	2
1	90 28 22 313 01-00	spout	1.00	10
7	09 30 30 047 90	screw	1.00	2
8	09 14 10 139 90	seal	4.00	2
2	90 20 66 028 00-00	handle ( cold )	1.00	10
11	04 28 22 028 00-00	pipe	1.00	60
5	09 31 11 040 90	pin	1.00	2
13	09 14 10 084 90	seal	1.00	2
4	90 90 03 175 00 90	top	1.00	2
6	09 24 03 193 90	adaptor	1.00	2
3	90 20 66 029 01-00	handle ( hot )	1.00	10
14	09 14 10 018 90	seal	1.00	2
9	04 28 22 022 10 90	connection	2.00	2
12	90 27 80 033 00-00	rosette	1.00	10