

VAIA Single-hole lavatory mixer with stand pipe without drain - Brushed Dark Brass

VAIA

22 585 809 Product version from 4/1/2025



- 8" Projection
- Swiveling spout 360°
- Round aerated stream
- Total height 49-1/4" - 52"
- Height to aerator/spout outlet 45-3/8" - 48-1/8"
- Flange diameter 5-3/8"
- Water flow rate limited to max. 1.2 gpm
- lead-free
- This product can help a building meet the requirements of Green Building Rating Systems, e.g. LEED®, BREEAM®, DGNB

(ADA)

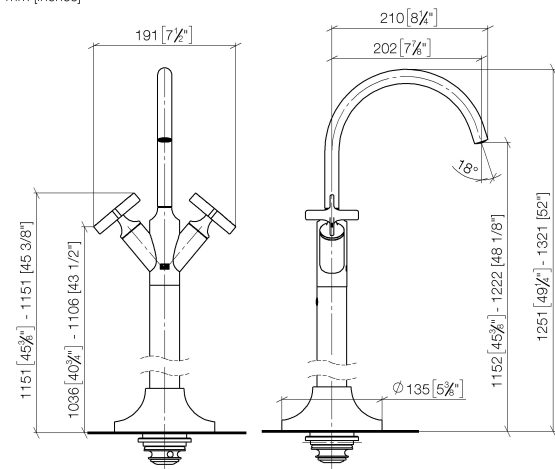
	Brushed Dark Brass	22 585 809-39 0010
	Chrome	22 585 809-00 0010
	Brushed Platinum	22 585 809-06 0010
	Platinum	22 585 809-08 0010
	Dark Chrome	22 585 809-19 0010
	Brushed Durabronze (23kt Gold)	22 585 809-28 0010
	Brushed Bronze	22 585 809-42 0010
	Brushed Champagne (22kt Gold)	22 585 809-46 0010
	Champagne (22kt Gold)	22 585 809-47 0010
	Brushed Dark Platinum	22 585 809-99 0010



VAIA Single-hole lavatory mixer with stand pipe without drain - Brushed Dark Brass

VAIA

22 585 809 Product version from 4/1/2025
mm [inches]



Codes & Standards

ADA	California Energy Commission (CEC)	NSF372	NSF61
-----	------------------------------------	--------	-------

Certificates and sustainability

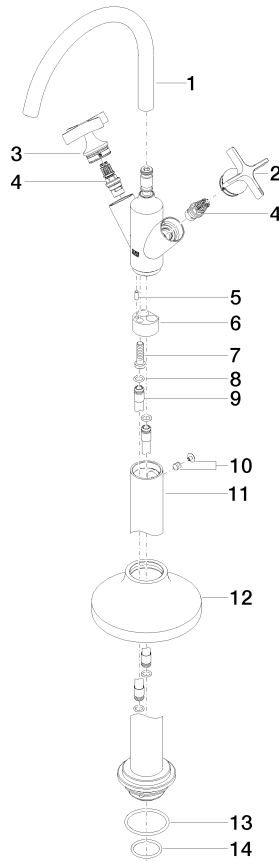
IAPMO_6397	IAPMO_N-4976
------------	--------------

VAIA Single-hole lavatory mixer with stand pipe without drain - Brushed Dark Brass

VAIA

22 585 809 Product version from 4/1/2025

Parts for other
finishes can be found
here: [Chrome](#)



Spare parts list

Number	Item Number	Designation	Number of units	Lead time
12	90 27 80 033 00-39	rosette	1.00	30
4	90 90 03 175 00 90	top	1.00	2
10	04 31 11 002 00 90	pin	1.00	2
11	04 28 22 028 00-39	pipe	1.00	60
1	90 28 22 313 01-39	spout	1.00	30
9	04 28 22 022 10 90	connection	2.00	2
3	90 20 66 029 01-39	handle (hot)	1.00	30
6	09 24 03 193 90	adaptor	1.00	2
7	09 30 30 047 90	screw	1.00	2
8	09 14 10 139 90	seal	4.00	2
14	09 14 10 018 90	seal	1.00	2
5	09 31 11 040 90	pin	1.00	2
13	09 14 10 084 90	seal	1.00	2
2	90 20 66 028 00-39	handle (cold)	1.00	30