



TARA Single-hole lavatory mixer with stand pipe without drain - Brushed Platinum

TARA

22 585 892 Product version from 4/1/2024



- 7-7/8" Projection
 - Swiveling spout 360°
 - Round aerated stream
 - Total height 43-1/8" - 45-7/8"
 - Height to aerator/spout outlet 40-3/8" - 43-1/8"
 - Flange diameter 5-3/8"
 - Water flow rate limited to max. 1.2 gpm
 - lead-free
 - This product can help a building meet the requirements of Green Building Rating Systems, e.g. LEED®, BREEAM®, DGNB **(ADA)**
- (ADA)

	Brushed Platinum	22 585 892-06 0010
	Chrome	22 585 892-00 0010
	Platinum	22 585 892-08 0010
	Dark Chrome	22 585 892-19 0010
	Brushed Durabrass (23kt Gold)	22 585 892-28 0010
	Matte Black	22 585 892-33 0010
	Brushed Bronze	22 585 892-42 0010
	Brushed Champagne (22kt Gold)	22 585 892-46 0010
	Champagne (22kt Gold)	22 585 892-47 0010
	Brushed Chrome	22 585 892-93 0010
	Brushed Dark Platinum	22 585 892-99 0010

Required article



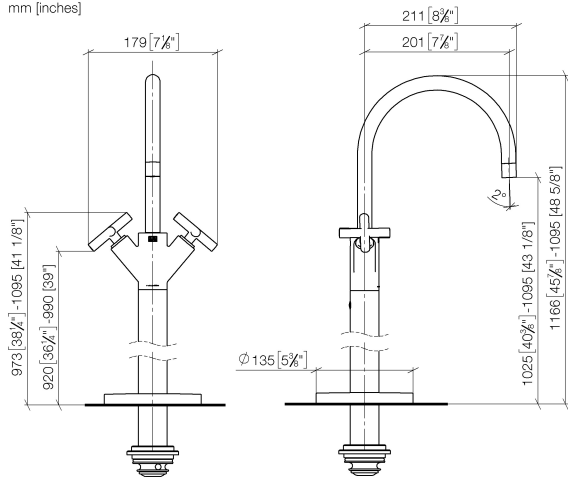
- Floor mounting rough set -35 949 970-900010
- Max. rough in depth 5-7/8"
 - Min. rough in depth 3-1/8"



TARA Single-hole lavatory mixer with stand pipe without drain - Brushed Platinum

TARA

22 585 892 Product version from 4/1/2024
mm [inches]



Codes & Standards

ADA	ASME A112.18.1	California Energy Commission (CEC)	cUPC
EPA WaterSense	NSF372	NSF61	WaterSense



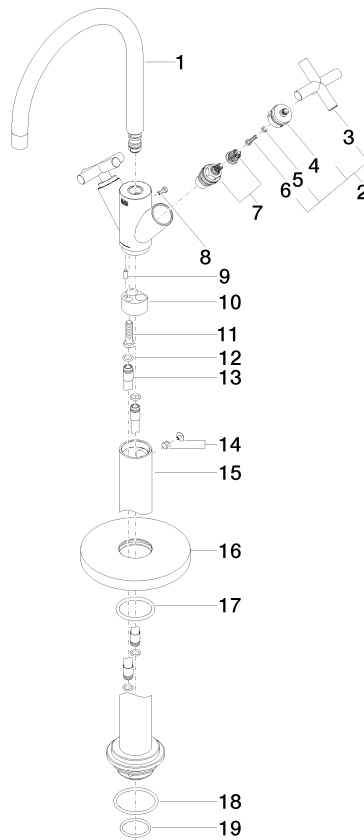
Certificates and sustainability

IAPMO_4976	IAPMO_8834	IAPMO_N-4	IAPMO_6
------------	------------	-----------	---------

TARA Single-hole lavatory mixer with stand pipe without drain - Brushed Platinum

TARA

22 585 892 Product version from 4/1/2024



Spare parts list

Number	Item Number	Designation	Number of units	Lead time
13	04 28 22 022 10 90	connection	2.00	2
18	09 14 10 084 90	seal	1.00	2
14	04 31 11 002 00 90	pin	1.00	2
8	09 30 30 054 90	screw	1.00	2
9	09 31 11 040 90	pin	1.00	2
12	09 14 10 139 90	seal	4.00	2
1	90 28 22 214 03-06	spout	1.00	10
4	90 12 12 219 00-06	base	2.00	10
19	09 14 10 018 90	seal	1.00	2
11	09 30 30 047 90	screw	1.00	2
15	04 28 22 028 00-06	pipe	1.00	60
16	09 27 88 011-06	rosette	1.00	10
3	09 20 89 010-06	handle	2.00	60
7	90 90 03 151 00 90	top	2.00	2
10	09 24 03 193 90	adaptor	1.00	2
17	90 14 10 043 00 90	seal	1.00	2
2	90 20 89 010 10-06	handle	2.00	10
6	90 30 30 075 00 90	screw	2.00	2
5	90 30 11 029 00 90	disc	2.00	2