




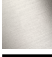



MADISON Tub mixer for wall-mounted installation with hand shower set -
Brushed Dark Brass

MADISON

25 023 360 Product version from 7/1/2025



- 6-1/4" Projection
 - Hand-held shower: COMPACT RAIN, flow rate max. 2 gpm (at 3 bar)
 - Spout: Rectangular aerator
 - Hand shower bracket
 - Tub / shower diverter
 - Flange diameter 2-3/4"
 - 1/2" connection
 - Center to center 6"
 - Metal shower hose 49-1/4" with anti-twist device
 - Spout flow rate max. 6.9 gpm
- NOTE: Local building codes may require the use of an anti-scald device. Please refer to remote pressure balance valve (35 914 970 90)
- Internal backflow preventer.

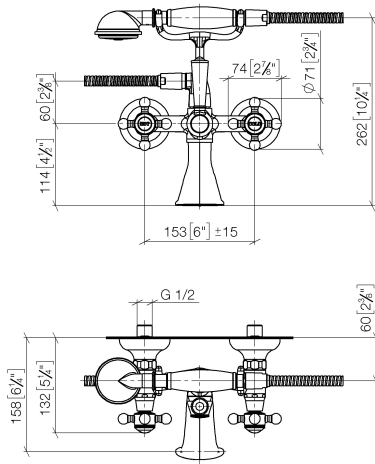
	Brushed Dark Brass	25 023 360-39 0010
	Chrome	25 023 360-00 0010
	Brushed Platinum	25 023 360-06 0010
	Platinum	25 023 360-08 0010
	Durabrass (23kt Gold)	25 023 360-09 0010
	Brushed Durabrass (23kt Gold)	25 023 360-28 0010
	Brushed Dark Platinum	25 023 360-99 0010



MADISON Tub mixer for wall-mounted installation with hand shower set - Brushed Dark Brass

MADISON

25 023 360 Product version from 7/1/2025
mm [inches]



Codes & Standards

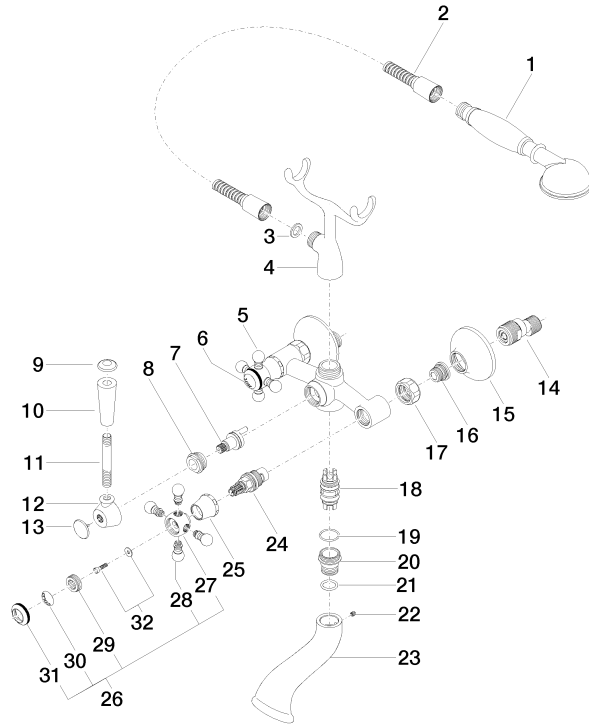
California Energy
Commission
(CEC)

MADISON Tub mixer for wall-mounted installation with hand shower set - Brushed Dark Brass

MADISON

25 023 360 Product version from 7/1/2025

Parts for other
finishes can be found
here: [Chrome](#)



Spare parts list

Number	Item Number	Designation	Number of units	Lead time
25	09 21 02 055-39	cover	2.00	-
Spare part can no longer be ordered, please order the replacement item				
2	28 104 970-39	Metal shower hose 1/2" x 1/2" x 49-1/4" - Brushed Dark Brass	1.00	30
11	09 28 22 013 90	pipe	1.00	2
4	04 17 20 010 00-39	holder	1.00	-
Spare part can no longer be ordered, please order the replacement item				
19	90 14 10 056 00 90	seal	1.00	2
10	11 170 370-39	MADISON Lever insert - Brushed Dark Brass	1.00	30
14	04 11 04 030 00 90	connection	2.00	2
5	04 20 36 002 07-39	handle (hot)	1.00	-
Spare part can no longer be ordered, please order the replacement item				
17	09 23 30 010-39	nut	2.00	-
Spare part can no longer be ordered, please order the replacement item				
29	09 20 83 006 90	handle	2.00	2
8	09 23 10 007 90	nut	1.00	2
16	04 29 05 014 00 90	nipple	2.00	2
23	09 11 06 033 20-39	spout	1.00	-



MADISON Tub mixer for wall-mounted installation with hand shower set - Brushed Dark Brass

MADISON

25 023 360 Product version from 7/1/2025

Spare part can no longer be ordered, please order the replacement item

28	09 20 36 004-39	handle	8.00	-
Spare part can no longer be ordered, please order the replacement item				
15	09 27 39 010-39	rosette	2.00	-
Spare part can no longer be ordered, please order the replacement item				
18	90 21 10 010 00 90	insert	1.00	2
26	04 20 36 002 06-39	handle (cold)	1.00	-
Spare part can no longer be ordered, please order the replacement item				
7	90 15 01 001 00 90	diverter	1.00	2
21	09 14 10 022 90	seal	1.00	2
32	04 30 30 029 00 90	fixing set	2.00	2
12	09 18 20 011-39	base	1.00	-
Spare part can no longer be ordered, please order the replacement item				
13	09 30 30 064-39	screw	1.00	-
Spare part can no longer be ordered, please order the replacement item				
31	09 20 36 005-39	handle	2.00	-
Spare part can no longer be ordered, please order the replacement item				
6	09 26 01 011 90	accessories	1.00	2
1	28 002 970-39 0010	MADISON Metal hand shower with porcelain (white) handle FlowReduce - Brushed Dark Brass	1.00	30
3	90 14 20 002 00 90	seal	1.00	2
27	09 20 36 002-39	handle	2.00	-
Spare part can no longer be ordered, please order the replacement item				
22	90 31 11 030 00 90	pin	1.00	2
9	09 30 30 062-39	screw	1.00	-
Spare part can no longer be ordered, please order the replacement item				
30	09 26 01 010 90	accessories	1.00	2
24	90 90 03 131 00 90	top	2.00	2
20	09 24 03 123 20 90	nipple	1.00	2