

## TARA Tub mixer for wall-mounted installation with hand shower set - Brushed Platinum

TARA

25 133 882 Product version up to 5/27/2021



- Spout: Round aerated stream
- Water flow rate limited to max. 5.8 gpm
- Hand-held shower: COMPACT RAIN, flow rate max. 1.8 gpm (at 3 bar)
- Hand shower set with anti-scale technology
- 9-1/2" Projection
- Tub / shower diverter
- Flanges Ø 2-1/2"
- Wall bracket with flange Ø 2"
- 1/2" connection
- Center to center 5-7/8" ± 5/8"
- Metal shower hose 49-1/4" with anti-twist device (ADA)

**NOTE: Local building codes may require the use of an anti-scald device. Please refer to remote pressure balance valve (35 914 970 90) Internal backflow preventer.**







**Combination with risers possible on request (special production).**

(ADA)

NOTE: Local building codes may require the use of an anti-scald device. Please refer to remote pressure balance valve (35 914 970 90)

Internal backflow preventer.

Combination with risers possible on request (special production).

	Brushed Platinum	25 133 882-06
	Chrome	25 133 882-00
	Platinum	25 133 882-08
	Dark Chrome	25 133 882-19
	Brushed Durabronze (23kt Gold)	25 133 882-28
	Matte Black	25 133 882-33
	Brushed Champagne (22kt Gold)	25 133 882-46
	Champagne (22kt Gold)	25 133 882-47
	Brushed Chrome	25 133 882-93
	Brushed Dark Platinum	25 133 882-99

### Required article



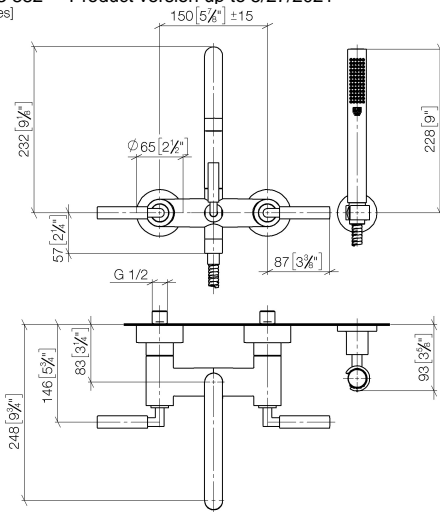
**Rough-in adapter -**  
• Please order 2 adapters

35 080 970-90  
0010

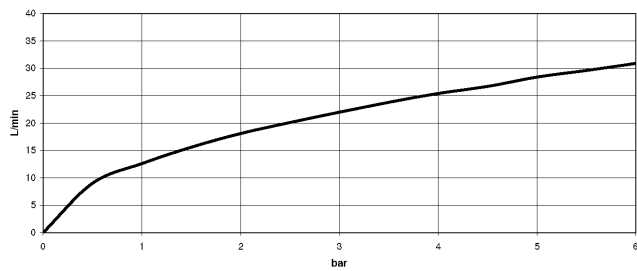
## TARA Tub mixer for wall-mounted installation with hand shower set - Brushed Platinum

TARA

25 133 882 Product version up to 5/27/2021  
mm [inches]



### Flow rate chart



### Codes & Standards

ADA DIN 4109 EN 1717 ISO 3822

Scottish Water  
Byelaws

UK Water Supply  
Regulations

Ü-Zeichen



TARA Tub mixer for wall-mounted installation with hand shower set - Brushed  
Platinum

TARA

---

25 133 882    Product version up to 5/27/2021

Certificates and sustainability

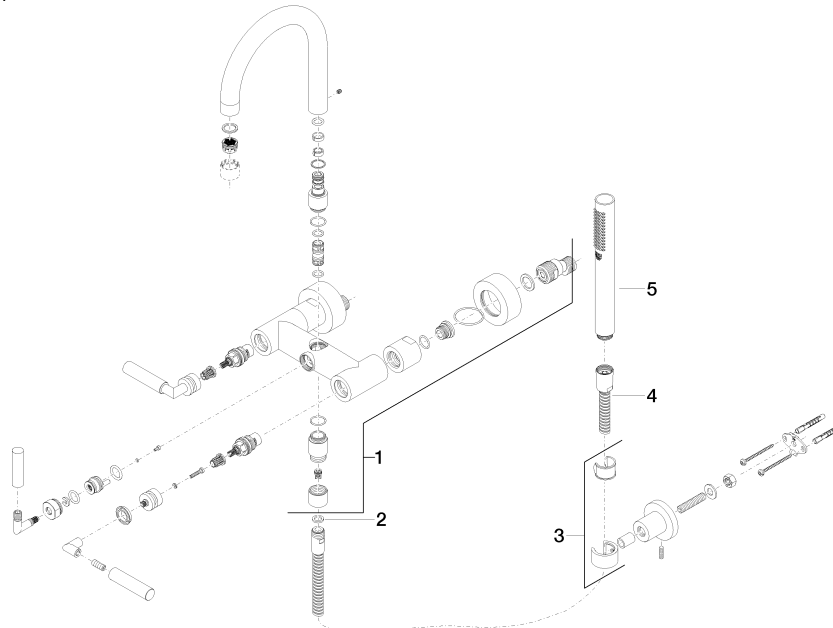
---

WRAS_2210	LGA_18	Belgaqua_21-026-2
-----------	--------	-------------------

## TARA Tub mixer for wall-mounted installation with hand shower set - Brushed Platinum

TARA

25 133 882 Product version up to 5/27/2021



### Spare parts list

Number	Item Number	Designation	Number of units	Lead time
4	90 30 02 072 00-06	Metal shower hose 1/2" x 3/8" x 49-1/4" - Brushed Platinum	1.00	10
1	25 100 882-06	shower set	1.00	60
5	28 019 979-06	Hand shower - Brushed Platinum	1.00	60
3	28 050 892-06	TARA Wall bracket - Brushed Platinum	1.00	10
2	90 14 20 026 00 90	seal	1.00	2