

## Single-lever tub mixer with stand pipe for freestanding installation with hand shower set - Brushed Champagne (22kt Gold)

SERIES SPECIFIC

25 863 661 Product version from 10/1/2023



- Spout: Round aerated stream
  - Water flow rate limited to max. 5.2 gpm
  - Hand-held shower: COMPACT RAIN, flow rate max. 1.8 gpm (at 3 bar)
  - Baton hand shower with descaling system
  - Swiveling spout 360°
  - 11-1/8" Projection
  - Hand shower bracket
  - Integrated diverter
  - Total height 40-5/8" - 43-3/8"
  - Lower body height 22-1/4" - 25"
  - Height to aerator/spout outlet 35-3/8" - 38-1/8"
  - Flanges Ø 5-3/8"
  - Metal shower hose 49-1/4" with anti-twist device
- NOTE: Local building codes may require the use of an anti-scald device. Please refer to remote pressure balance valve (35 914 970 90) Internal backflow preventer.**

NOTE: Local building codes may require the use of an anti-scald device. Please refer to remote pressure balance valve (35 914 970 90)

Internal backflow preventer.

	Brushed Champagne (22kt Gold)	25 863 661-46
	Chrome	25 863 661-00
	Brushed Platinum	25 863 661-06
	Dark Chrome	25 863 661-19
	Light gold	25 863 661-26
	Brushed Light Gold	25 863 661-27
	Brushed Durabrass (23kt Gold)	25 863 661-28
	Matte Black	25 863 661-33
	Brushed Bronze	25 863 661-42
	Champagne (22kt Gold)	25 863 661-47
	Brushed Chrome	25 863 661-93
	Brushed Dark Platinum	25 863 661-99

### Required article



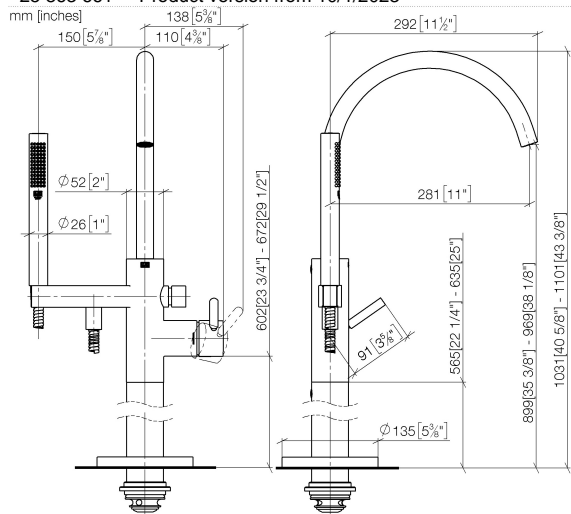
- Floor mounting rough set -**
- Min. rough in depth 3-1/8"
  - Max. rough in depth 5-7/8"

35 949 970-90  
0010

# Single-lever tub mixer with stand pipe for freestanding installation with hand shower set - Brushed Champagne (22kt Gold)

SERIES SPECIFIC

25 863 661 Product version from 10/1/2023



## Flow rate chart



## Codes & Standards

ASME A112.18.1

California Energy  
Commission  
(CEC)

cUPC



## Single-lever tub mixer with stand pipe for freestanding installation with hand shower set - Brushed Champagne (22kt Gold)

SERIES SPECIFIC

---

25 863 661 Product version from 10/1/2023

Certificates and sustainability

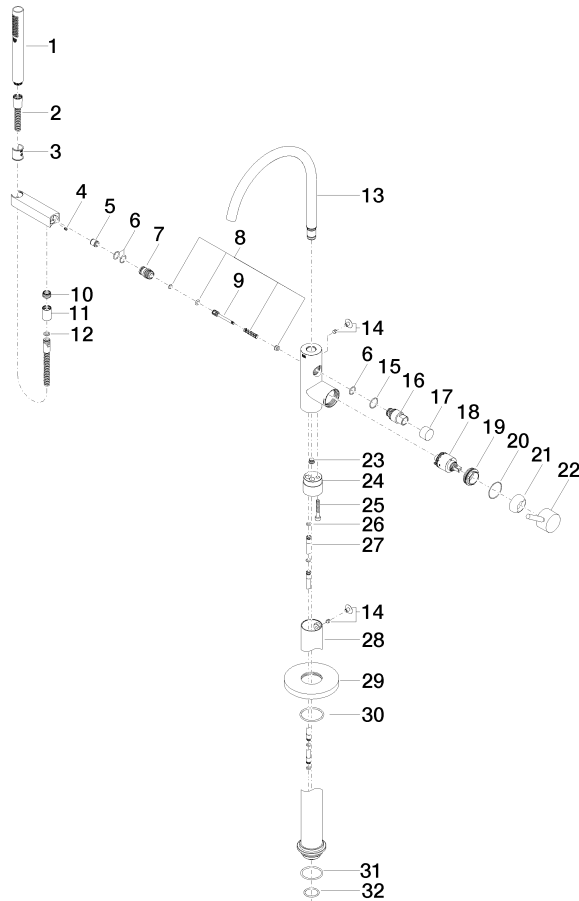
---

IAPMO\_4976

# Single-lever tub mixer with stand pipe for freestanding installation with hand shower set - Brushed Champagne (22kt Gold)

SERIES SPECIFIC

25 863 661 Product version from 10/1/2023





## Single-lever tub mixer with stand pipe for freestanding installation with hand shower set - Brushed Champagne (22kt Gold)

SERIES SPECIFIC

25 863 661 Product version from 10/1/2023

### Spare parts list

Number	Item Number	Designation	Number of units	Lead time
19	09 24 04 298 90	nut	1.00	2
24	09 24 03 152 20-46	adaptor	1.00	-
Spare part can no longer be ordered, please order the replacement item				
10	09 24 03 069 90	nipple	1.00	2
26	09 14 10 139 90	seal	2.00	2
8	90 16 02 023 00 90	spring	1.00	2
31	09 14 10 084 90	seal	1.00	2
15	09 14 10 112 90	seal	1.00	2
22	90 20 66 005 00-46	handle	1.00	30
32	09 14 10 018 90	seal	1.00	2
27	04 28 22 025 00 90	connection	2.00	2
7	09 24 03 153 20-46	nipple	1.00	-
Spare part can no longer be ordered, please order the replacement item				
4	09 31 11 058 90	pin	1.00	2
17	09 20 88 002-46	handle	1.00	30
25	09 30 30 111 90	screw	1.00	2
20	09 14 10 037 90	seal	1.00	2
3	09 18 40 118 90	sleeve	1.00	2
16	09 21 34 081 20-46	nipple	1.00	30
28	04 28 22 030 00-46	pipe	1.00	30
9	09 31 09 102 20-46	pull-rod	1.00	-
Spare part can no longer be ordered, please order the replacement item				
14	04 31 20 036 00 90	plug	2.00	2
18	90 15 05 039 00 90	cartridge	1.00	2
21	09 28 30 036-46	cover	1.00	30
2	90 30 02 072 00-46	Metal shower hose 1/2" x 3/8" x 49-1/4" - Brushed Champagne (22kt Gold)	1.00	30
29	09 27 88 007-46	rosette	1.00	30
5	90 23 01 141 00 90	back-flow preventer	1.00	2
12	90 14 20 026 00 90	seal	1.00	2
23	04 31 20 039 11 90	plug	1.00	2
13	90 28 22 327 01-46	spout	1.00	30
30	90 14 10 129 00 90	seal	1.00	2
6	90 14 10 010 00 90	seal	3.00	2
11	90 21 02 069 00-46	cover	1.00	30
1	90 12 11 140 41-46	shower	1.00	30