



CL.1 Single-lever tub mixer with stand pipe for freestanding installation with hand shower set - Champagne (22kt Gold)

CL.1

25 863 705 Product version from 7/1/2023



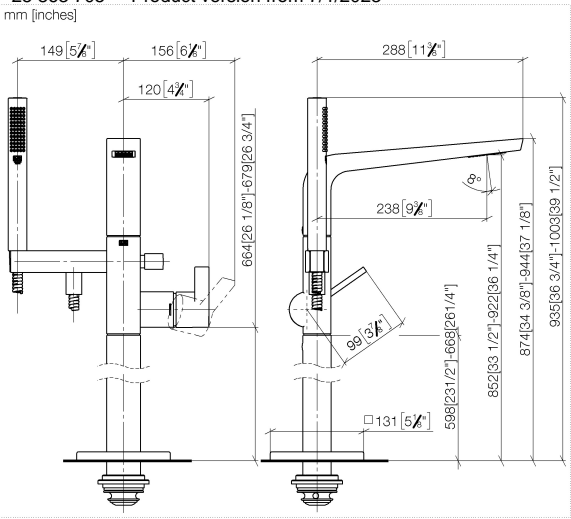
- 9-3/8" Projection
  - Rectangular aerator with 55 individual streams
  - Spout flow rate max. 6.5 gpm
  - Hand-held shower: COMPACT RAIN, flow rate max. 1.8 gpm (at 3 bar)
  - Baton hand shower with descaling system
  - Hand shower bracket
  - Integrated diverter
  - Total height 36-3/4" - 39-5/8"
  - Lower body height 23-1/2" - 26-1/4"
  - Height to aerator/spout outlet 33-1/2" - 36-1/4"
  - Flange 5-1/8" x 5-1/8"
  - Metal shower hose 49-1/4" with anti-twist device
- NOTE: Local building codes may require the use of an anti-scald device. Please refer to remote pressure balance valve (35 914 970 90)

	Champagne (22kt Gold)	25 863 705-47
	Chrome	25 863 705-00
	Brushed Platinum	25 863 705-06
	Dark Chrome	25 863 705-19
	Brushed Champagne (22kt Gold)	25 863 705-46
	Brushed Dark Platinum	25 863 705-99

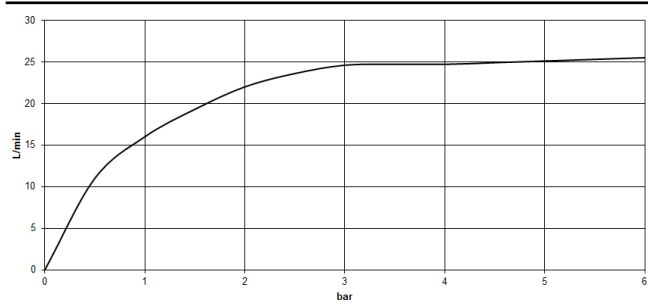
**CL.1 Single-lever tub mixer with stand pipe for freestanding installation with hand shower set - Champagne (22kt Gold)**

CL.1

25 863 705 Product version from 7/1/2023  
mm [inches]



Flow rate chart



**Codes & Standards**

ASME A112.18.1	California Energy Commission (CEC)	cUPC	EN 1717
----------------	------------------------------------	------	---------



## CL.1 Single-lever tub mixer with stand pipe for freestanding installation with hand shower set - Champagne (22kt Gold)

---

CL.1

25 863 705 Product version from 7/1/2023

Certificates and sustainability

---

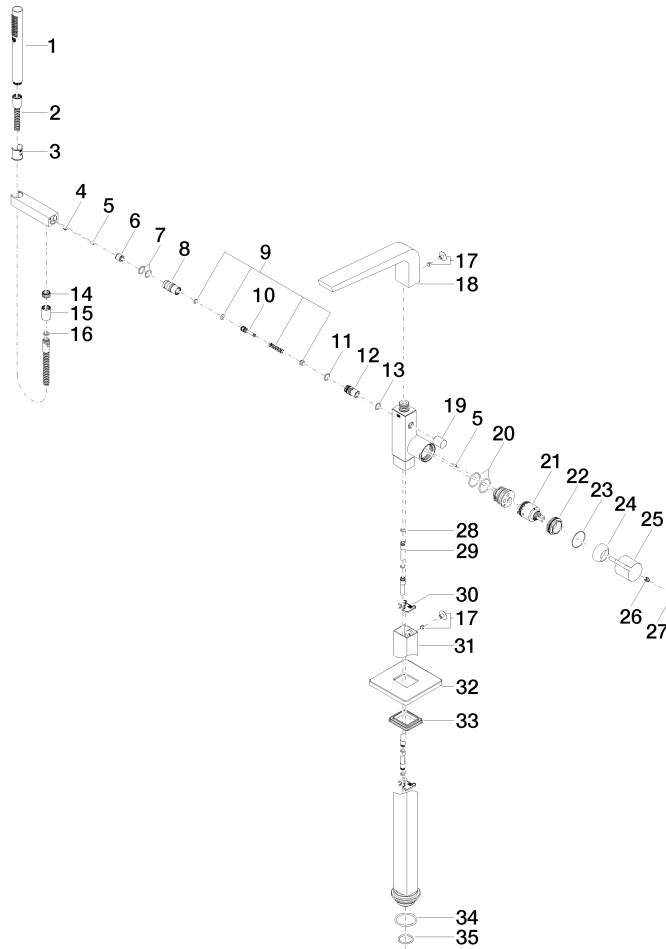
Belgaqua\_24-003-2 IAPMO\_4976 (

# CL.1 Single-lever tub mixer with stand pipe for freestanding installation with hand shower set - Champagne (22kt Gold)

CL.1

25 863 705 Product version from 7/1/2023

Parts for other  
finishes can be found  
here: [Chrome](#)





## CL.1 Single-lever tub mixer with stand pipe for freestanding installation with hand shower set - Champagne (22kt Gold)

CL.1

25 863 705 Product version from 7/1/2023

### Spare parts list

Number	Item Number	Designation	Number of units	Lead time
33	09 14 03 107 90	seal	1.00	2
13	90 14 10 033 00 90	seal	1.00	2
28	09 14 10 139 90	seal	2.00	2
26	90 31 11 030 00 90	pin	1.00	2
7	90 14 10 010 00 90	seal	2.00	2
19	09 20 71 031-47	handle	1.00	60
5	09 31 11 040 90	pin	3.00	2
34	09 14 10 084 90	seal	1.00	2
29	04 28 22 025 00 90	connection	2.00	2
24	09 28 30 036-47	cover	1.00	30
16	90 14 20 026 00 90	seal	1.00	2
4	09 31 11 058 90	pin	1.00	2
32	09 27 71 011-47	rosette	1.00	60
12	09 21 34 080-47	nipple	1.00	60
27	90 31 20 087 00-47	plug	1.00	30
35	09 14 10 018 90	seal	1.00	2
31	04 28 22 024 00-47	pipe	1.00	60
30	09 20 93 051 90	holder	2.00	2
25	09 20 67 014-47	handle	1.00	60
17	04 31 20 034 00 90	plug	2.00	2
14	09 24 03 069 90	nipple	1.00	2
10	09 31 09 094 20-47	pull-rod	1.00	60
3	09 18 40 118 90	sleeve	1.00	2
18	90 11 70 008 00-47	spout	1.00	30
22	09 24 04 298 90	nut	1.00	2
23	09 14 10 037 90	seal	1.00	2
8	09 24 03 130-00	nipple	1.00	10
2	90 30 02 072 00-47	Metal shower hose 1/2" x 3/8" x 49-1/4" - Champagne (22kt Gold)	1.00	30
9	90 16 02 023 00 90	spring	1.00	2
6	90 23 01 141 00 90	back-flow preventer	1.00	2
20	09 14 10 148 90	seal	2.00	2
11	90 14 10 055 00 90	seal	1.00	2
21	90 15 05 039 00 90	cartridge	1.00	2
15	90 21 02 069 00-47	cover	1.00	30
1	90 12 11 140 41-47	shower	1.00	30