



LULU Single-lever tub mixer with stand pipe for freestanding installation with hand shower set - Brushed Platinum



LULU

25 863 710



- Spout: Round aerated stream
  - Water flow rate limited to max. 7 gpm
  - Hand-held shower: COMPACT RAIN, flow rate max. 1.8 gpm (at 3 bar)
  - Baton hand shower with descaling system
  - Hand shower bracket
  - Integrated diverter
  - 8-1/2" Projection
  - Total height 36-3/4" - 39-1/2"
  - Lower body height 23-1/2" - 26-1/4"
  - Height to aerator/spout outlet 32-1/2" - 35-1/4"
  - Flange 5-1/8" x 5-1/8"
  - Metal shower hose 49-1/4" with anti-twist device
- NOTE: Local building codes may require the use of an anti-scald device. Please refer to remote pressure balance valve (35 914 970 90) Internal backflow preventer.**

NOTE: Local building codes may require the use of an anti-scald device. Please refer to remote pressure balance valve (35 914 970 90) Internal backflow preventer.

	Brushed Platinum	25 863 710-06
	Chrome	25 863 710-00

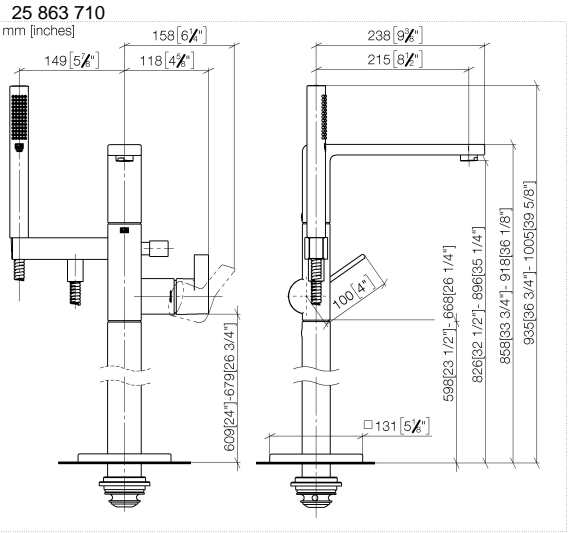
Required article



- |                                   |               |
|-----------------------------------|---------------|
| <b>Floor mounting rough set -</b> | 35 949 970-90 |
| •Max. rough in depth 5-7/8"       | 0010          |
| •Min. rough in depth 3-1/8"       |               |

LULU Single-lever tub mixer with stand pipe for freestanding installation with hand shower set - Brushed Platinum

LULU





LULU Single-lever tub mixer with stand pipe for freestanding installation with  
hand shower set - Brushed Platinum

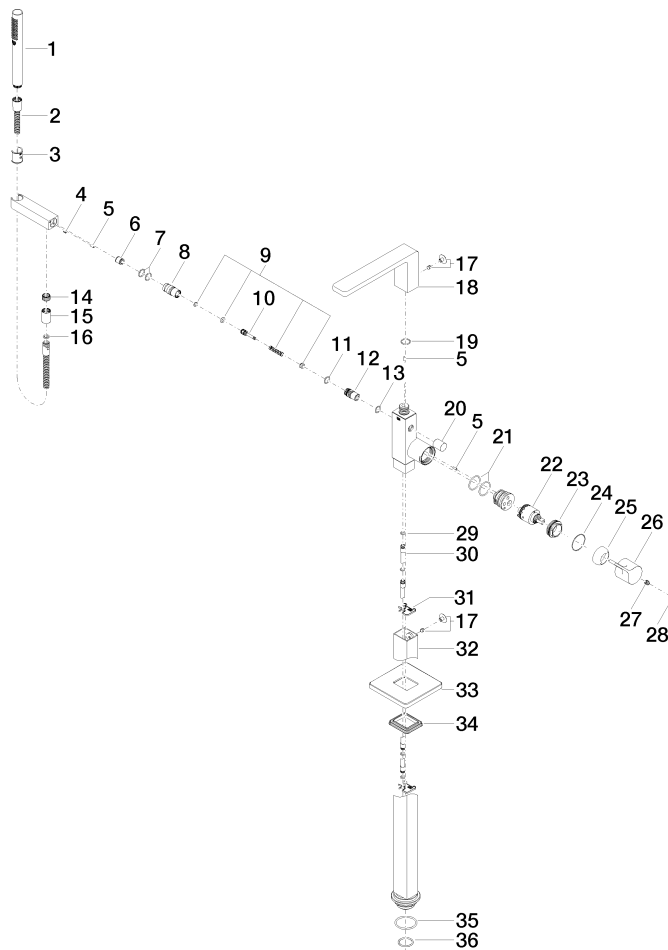
LULU

25 863 710				
Certificates and sustainability				
IAPMO_4976	Belgaqua_19_77	WRAS_2003	LGA_29	Belgaqua_24-003-2

# LULU Single-lever tub mixer with stand pipe for freestanding installation with hand shower set - Brushed Platinum

LULU

25 863 710





## LULU Single-lever tub mixer with stand pipe for freestanding installation with hand shower set - Brushed Platinum

LULU

25 863 710

### Spare parts list

Number	Item Number	Designation	Number of units	Lead time
25	09 28 30 036-06	cover	1.00	10
19	09 14 10 031 90	seal	1.00	2
4	09 31 11 058 90	pin	1.00	2
29	09 14 10 139 90	seal	2.00	2
3	09 18 40 118 90	sleeve	1.00	2
9	90 16 02 023 00 90	spring	1.00	2
33	09 27 71 011-06	rosette	1.00	10
22	90 15 05 039 00 90	cartridge	1.00	2
26	09 20 80 022-06	handle	1.00	10
24	09 14 10 037 90	seal	1.00	2
17	04 31 20 034 00 90	plug	2.00	2
8	09 24 03 130-00	nipple	1.00	10
14	09 24 03 069 90	nipple	1.00	2
5	09 31 11 040 90	pin	3.00	2
28	90 31 20 087 00-06	plug	1.00	10
35	09 14 10 084 90	seal	1.00	2
2	90 30 02 072 00-06	Metal shower hose 1/2" x 3/8" x 49-1/4" - Brushed Platinum	1.00	10
32	04 28 22 024 00-06	pipe	1.00	10
23	09 24 04 298 90	nut	1.00	2
31	09 20 93 051 90	holder	2.00	2
36	09 14 10 018 90	seal	1.00	2
10	09 31 09 094 20-06	pull-rod	1.00	10
18	90 11 71 043 00-06	spout	1.00	10
12	09 21 34 080-06	nipple	1.00	10
30	04 28 22 025 00 90	connection	2.00	2
34	09 14 03 107 90	seal	1.00	2
21	09 14 10 148 90	seal	2.00	2
20	09 20 71 031-06	handle	1.00	10
13	90 14 10 033 00 90	seal	1.00	2
7	90 14 10 010 00 90	seal	2.00	2
16	90 14 20 026 00 90	seal	1.00	2
27	90 31 11 030 00 90	pin	1.00	2
15	90 21 02 069 00-06	cover	1.00	10
11	90 14 10 055 00 90	seal	1.00	2
6	90 23 01 141 00 90	back-flow preventer	1.00	2
1	90 12 11 140 41-06	shower	1.00	10