

MEM Single-lever tub mixer with stand pipe for freestanding installation with hand shower set - Brushed Dark Brass
MEM

25 863 782 Product version from 9/1/2025



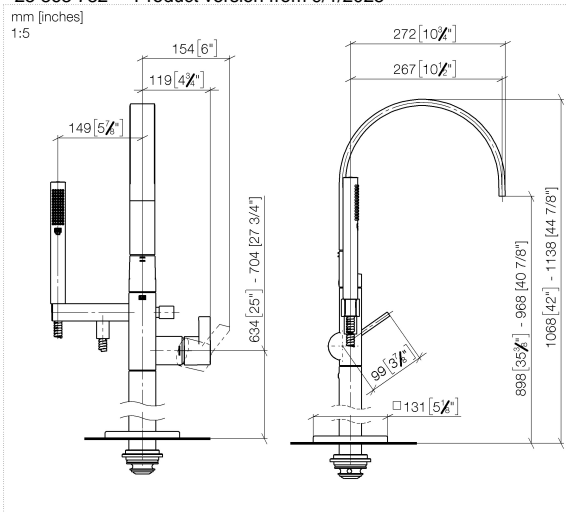
- 10-1/2" Projection
- Spout: Cascade
- Water flow rate limited to max. 6.6 gpm
- Hand-held shower: COMPACT RAIN, flow rate max. 1.8 gpm (at 3 bar)
- Baton hand shower with descaling system
- Hand shower bracket
- Integrated diverter
- Total height 44-7/8" - 47-5/8"
- Lower body height 23-1/2" - 26-1/4"
- Height to aerator/spout outlet 38-1/8" - 40-7/8"
- Flange 5-1/8" x 5-1/8"
- Metal shower hose 49-1/4" with anti-twist device

	Brushed Dark Brass	25 863 782-39
	Chrome	25 863 782-00
	Brushed Platinum	25 863 782-06
	Platinum	25 863 782-08
	Dark Chrome	25 863 782-19
	Brushed Durabronze (23kt Gold)	25 863 782-28
	Brushed Champagne (22kt Gold)	25 863 782-46
	Champagne (22kt Gold)	25 863 782-47
	Brushed Dark Platinum	25 863 782-99

MEM Single-lever tub mixer with stand pipe for freestanding installation with hand shower set - Brushed Dark Brass

MEM

25 863 782 Product version from 9/1/2025



Flow rate chart



Codes & Standards

California Energy Commission (CEC)	DIN 4109	ISO 3822	Scottish Water Byelaws
UK Water Supply Regulations	Ü-Zeichen		



MEM Single-lever tub mixer with stand pipe for freestanding installation with hand shower set - Brushed Dark Brass

MEM

25 863 782 Product version from 9/1/2025

Certificates and sustainability

LGA_38

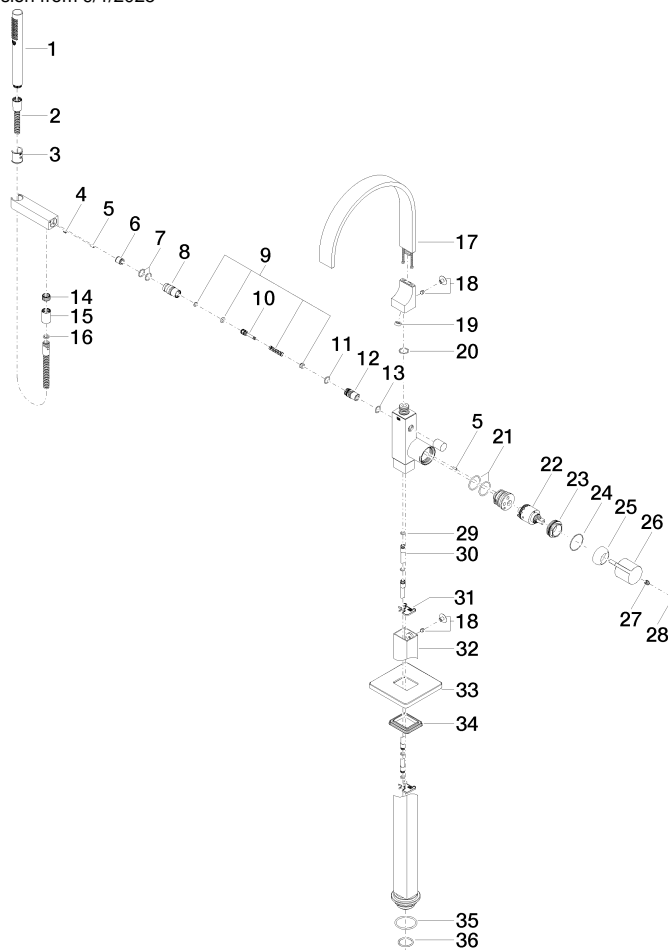
WRAS_240502

MEM Single-lever tub mixer with stand pipe for freestanding installation with hand shower set - Brushed Dark Brass

MEM

25 863 782 Product version from 9/1/2025

Parts for other
finishes can be found
here: [Chrome](#)



MEM Single-lever tub mixer with stand pipe for freestanding installation with hand shower set - Brushed Dark Brass

MEM

25 863 782 Product version from 9/1/2025

Spare parts list

Number	Item Number	Designation	Number of units	Lead time
24	09 14 10 037 90	seal	1.00	2
20	09 14 10 031 90	seal	2.00	2
18	04 31 20 034 00 90	plug	2.00	2
19	09 23 01 057 90	flow reducer	1.00	2
23	09 24 04 298 90	nut	1.00	2
10	09 31 09 094 20-39	pull-rod	1.00	-
Spare part can no longer be ordered, please order the replacement item				
14	09 24 03 069 90	nipple	1.00	2
25	09 28 30 036-39	cover	1.00	60
3	09 18 40 118 90	sleeve	1.00	2
22	90 15 05 039 00 90	cartridge	1.00	2
27	90 31 11 030 00 90	pin	1.00	2
32	04 28 22 024 00-39	pipe	1.00	-
Spare part can no longer be ordered, please order the replacement item				
31	09 20 93 051 90	holder	2.00	2
35	09 14 10 084 90	seal	1.00	2
12	09 21 34 080-39	nipple	1.00	-
Spare part can no longer be ordered, please order the replacement item				
5	09 31 11 040 90	pin	3.00	2
16	90 14 20 026 00 90	seal	1.00	2
34	09 14 03 107 90	seal	1.00	2
11	90 14 10 055 00 90	seal	1.00	2
8	09 24 03 130-39	nipple	1.00	-
Spare part can no longer be ordered, please order the replacement item				
6	90 23 01 141 00 90	back-flow preventer	1.00	2
30	04 28 22 025 00 90	connection	2.00	2
13	90 14 10 033 00 90	seal	1.00	2
7	90 14 10 010 00 90	seal	2.00	2
9	90 16 02 023 00 90	spring	1.00	2
28	90 31 20 087 00-39	plug	1.00	30
1	90 12 11 140 41-39	shower	1.00	30
36	09 14 10 018 90	seal	1.00	2
15	90 21 02 069 00-39	cover	1.00	30
17	90 28 22 392 00-39	spout	1.00	30
33	09 27 71 011-39	rosette	1.00	-
Spare part can no longer be ordered, please order the replacement item				
29	09 14 10 139 90	seal	4.00	2
21	09 14 10 148 90	seal	1.00	2
2	90 30 02 072 00-39	hose	1.00	30
26	09 20 67 014-39	handle	1.00	-
Spare part can no longer be ordered, please order the replacement item				
4	09 31 11 058 90	pin	1.00	2