

TARA Two-hole tub mixer for freestanding installation with hand shower set - Chrome

TARA

25 943 882 Product version up to 5/27/2021



- 8-5/8" Projection
- Swiveling spout 180°
- Spout: Round aerated stream
- Hand-held shower: COMPACT RAIN, flow rate max. 1.8 gpm (at 3 bar)
- Hand shower with descaling system
- Tub / shower diverter
- Total height 36-1/4"
- Riser height 24-3/4"
- Height to aerator/spout outlet 30-1/8"
- Flanges Ø 3-1/2"
- Center to center 5-7/8"
- Metal shower hose 49-1/4" with anti-twist device
- Hand shower to be mounted on right pillar
- Water flow rate limited to max. 5.8 gpm

(ADA)

NOTE: Local building codes may require the use of an anti-scald device. Please refer to remote pressure balance valve (35 914 970 90) Internal backflow preventer.

(ADA)

NOTE: Local building codes may require the use of an anti-scald device. Please refer to remote pressure balance valve (35 914 970 90)

Internal backflow preventer.

| | | |
|--|-------------------------------|---------------|
| | Chrome | 25 943 882-00 |
| | Brushed Platinum | 25 943 882-06 |
| | Platinum | 25 943 882-08 |
| | Dark Chrome | 25 943 882-19 |
| | Brushed Durabrass (23kt Gold) | 25 943 882-28 |
| | Matte Black | 25 943 882-33 |
| | Brushed Bronze | 25 943 882-42 |
| | Brushed Champagne (22kt Gold) | 25 943 882-46 |
| | Champagne (22kt Gold) | 25 943 882-47 |
| | Brushed Chrome | 25 943 882-93 |
| | Brushed Dark Platinum | 25 943 882-99 |

Required article



Floor mounting rough set -

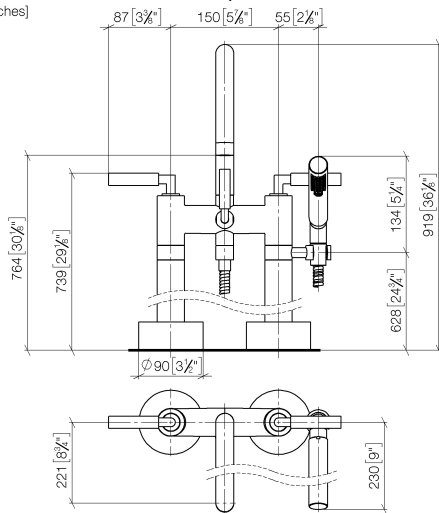
- Max. rough in depth 6-1/4"
- Min. rough in depth 3-1/8"

35 951 970-90
0010

TARA Two-hole tub mixer for freestanding installation with hand shower set - Chrome

TARA

25 943 882 Product version up to 5/27/2021
mm [inches]



Flow rate chart



Codes & Standards

| | | | |
|---------|----------------|------------------------|-----------------------------|
| ADA | ASME A112.18.1 | cUPC | DIN 4109 |
| EN 1717 | ISO 3822 | Scottish Water Byelaws | UK Water Supply Regulations |

Ü-Zeichen



TARA Two-hole tub mixer for freestanding installation with hand shower set -
Chrome

TARA

25 943 882 Product version up to 5/27/2021

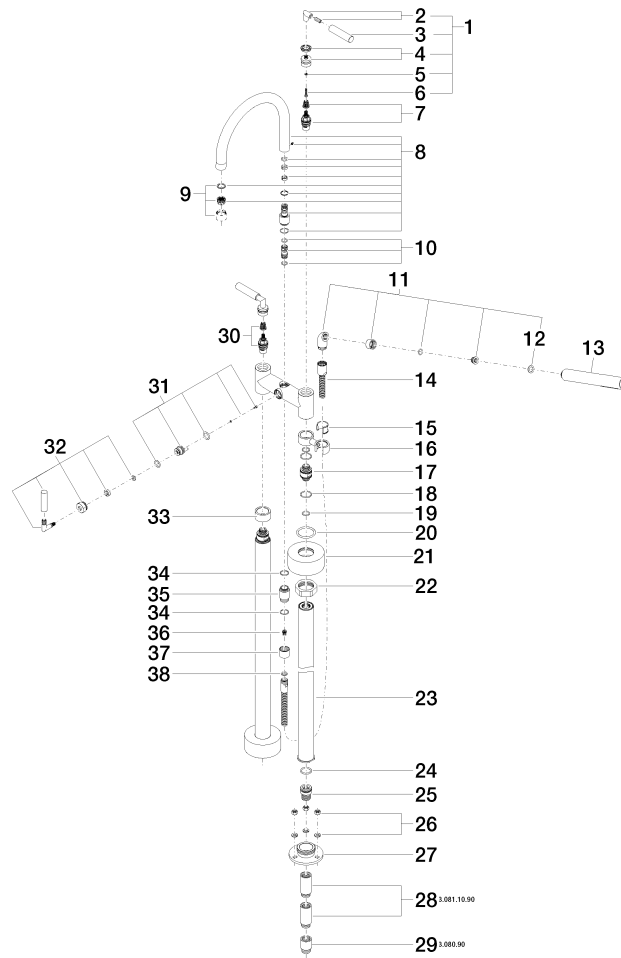
Certificates and sustainability

| | | | |
|------------|-----------|--------|-------------------|
| IAPMO_4976 | WRAS_2212 | LGA_18 | Belgaqua_21-033-2 |
|------------|-----------|--------|-------------------|

TARA Two-hole tub mixer for freestanding installation with hand shower set - Chrome

TARA

25 943 882 Product version up to 5/27/2021





TARA Two-hole tub mixer for freestanding installation with hand shower set - Chrome

TARA

25 943 882 Product version up to 5/27/2021

Spare parts list

| Number | Item Number | Designation | Number of units | Lead time |
|--------|--------------------|--|-----------------|-----------|
| 30 | 90 90 03 131 00 90 | top | 1.00 | 2 |
| 28 | 09 24 03 081 10 90 | extension | 4.00 | 2 |
| 11 | 04 24 04 189 00-00 | nipple | 1.00 | 10 |
| 21 | 09 27 89 025-00 | rosette | 2.00 | 10 |
| 13 | 28 019 979-00 | Hand shower - Chrome | 1.00 | 60 |
| 8 | 90 28 22 222 00-00 | spout | 1.00 | 10 |
| 27 | 09 30 11 130-07 | connection | 2.00 | 30 |
| 29 | 09 24 03 080 90 | extension | 2.00 | 2 |
| 35 | 09 24 03 121-00 | nipple | 1.00 | 10 |
| 20 | 09 14 10 041 90 | seal | 2.00 | 2 |
| 10 | 90 21 10 011 00 90 | diverter | 1.00 | 2 |
| 7 | 90 90 03 130 00 90 | top | 1.00 | 2 |
| 17 | 09 29 05 021 20 90 | nipple | 2.00 | 2 |
| 3 | 09 20 88 052-00 | handle | 2.00 | 10 |
| 16 | 04 28 10 029 01-00 | holder | 1.00 | 10 |
| 14 | 90 30 02 072 00-00 | Metal shower hose 1/2" x 3/8" x 49-1/4" - Chrome | 1.00 | 10 |
| 31 | 90 15 01 005 00 90 | insert | 1.00 | 2 |
| 2 | 04 18 20 022 00-00 | angle | 2.00 | 10 |
| 18 | 09 14 10 112 90 | seal | 4.00 | 2 |
| 4 | 90 12 12 007 00-00 | base | 2.00 | 10 |
| 37 | 09 21 02 143-00 | sleeve | 1.00 | 10 |
| 1 | 04 20 88 052 00-00 | handle | 2.00 | 10 |
| 25 | 09 24 03 094-07 | nipple | 2.00 | 30 |
| 32 | 90 18 20 025 00-00 | diverter | 1.00 | 10 |
| 26 | 04 23 10 023 00 90 | fixing set | 2.00 | 2 |
| 36 | 09 23 01 131 90 | back-flow preventer | 1.00 | 2 |
| 33 | 09 28 10 028-00 | sleeve | 1.00 | 10 |
| 23 | 04 28 22 009 20-00 | connection | 2.00 | 10 |
| 9 | 90 23 01 024 00-00 | aerator | 1.00 | 10 |
| 22 | 09 23 30 040-07 | nut | 2.00 | 30 |
| 24 | 09 14 10 081 90 | seal | 2.00 | 2 |
| 19 | 90 14 10 055 00 90 | seal | 4.00 | 2 |
| 34 | 90 14 10 032 00 90 | seal | 2.00 | 2 |
| 38 | 90 14 20 026 00 90 | seal | 1.00 | 2 |
| 12 | 90 14 20 002 00 90 | seal | 1.00 | 2 |
| 15 | 90 18 40 035 00 90 | sleeve | 1.00 | 2 |
| 5 | 90 30 11 029 00 90 | disc | 2.00 | 2 |
| 6 | 90 30 30 075 00 90 | screw | 2.00 | 2 |