



TARA Two-hole tub mixer for freestanding installation with hand shower set - Brushed Platinum

TARA

25 943 882 Product version up to 5/27/2021



- 8-5/8" Projection
- Swiveling spout 180°
- Spout: Round aerated stream
- Hand-held shower: COMPACT RAIN, flow rate max. 1.8 gpm (at 3 bar)
- Hand shower with descaling system
- Tub / shower diverter
- Total height 36-1/4"
- Riser height 24-3/4"
- Height to aerator/spout outlet 30-1/8"
- Flanges Ø 3-1/2"
- Center to center 5-7/8"
- Metal shower hose 49-1/4" with anti-twist device
- Hand shower to be mounted on right pillar
- Water flow rate limited to max. 5.8 gpm

(ADA)

NOTE: Local building codes may require the use of an anti-scald device. Please refer to remote pressure balance valve (35 914 970 90) Internal backflow preventer.

(ADA)

NOTE: Local building codes may require the use of an anti-scald device. Please refer to remote pressure balance valve (35 914 970 90)

Internal backflow preventer.

	Brushed Platinum	25 943 882-06
	Chrome	25 943 882-00
	Platinum	25 943 882-08
	Dark Chrome	25 943 882-19
	Brushed Durabrass (23kt Gold)	25 943 882-28
	Matte Black	25 943 882-33
	Brushed Bronze	25 943 882-42
	Brushed Champagne (22kt Gold)	25 943 882-46
	Champagne (22kt Gold)	25 943 882-47
	Brushed Chrome	25 943 882-93
	Brushed Dark Platinum	25 943 882-99

Required article



Floor mounting rough set -

- Max. rough in depth 6-1/4"
- Min. rough in depth 3-1/8"

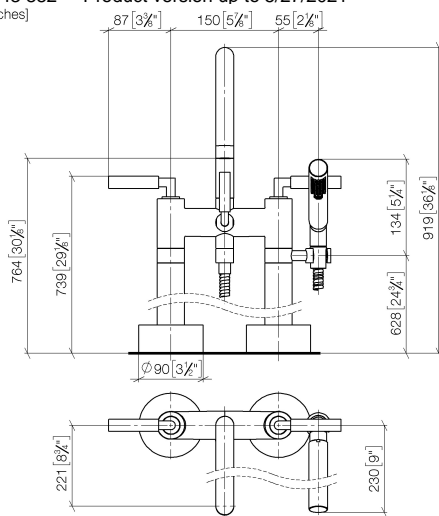
35 951 970-90
0010



TARA Two-hole tub mixer for freestanding installation with hand shower set - Brushed Platinum

TARA

25 943 882 Product version up to 5/27/2021
mm [inches]



Flow rate chart



Codes & Standards

ADA	ASME A112.18.1	cUPC	DIN 4109
EN 1717	ISO 3822	Scottish Water Byelaws	UK Water Supply Regulations

Ü-Zeichen



TARA Two-hole tub mixer for freestanding installation with hand shower set -
Brushed Platinum

TARA

25 943 882 Product version up to 5/27/2021

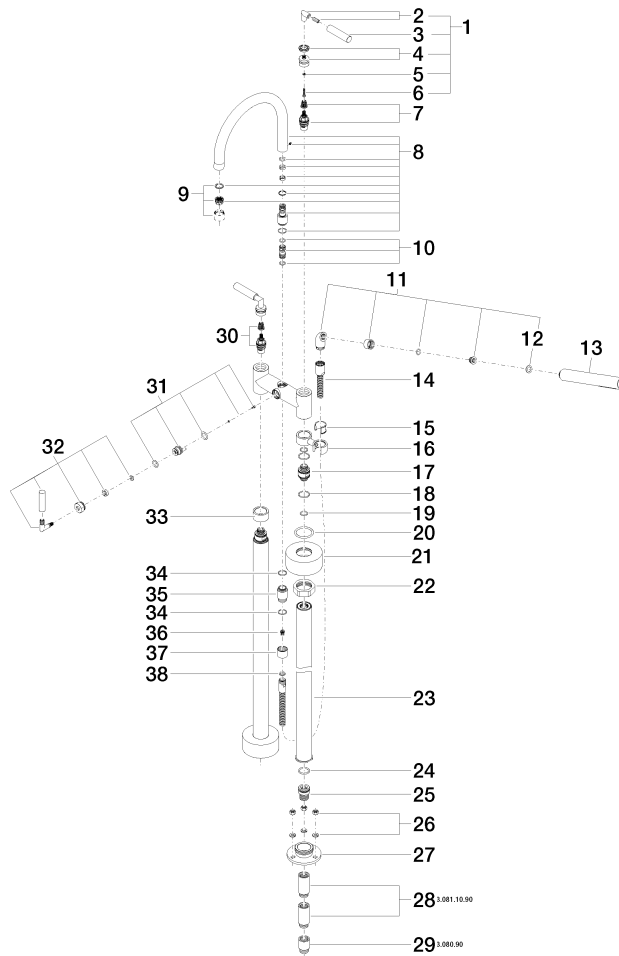
Certificates and sustainability

IAPMO_4976	WRAS_2212	LGA_18	Belgaqua_21-033-2
------------	-----------	--------	-------------------

TARA Two-hole tub mixer for freestanding installation with hand shower set - Brushed Platinum

TARA

25 943 882 Product version up to 5/27/2021





TARA Two-hole tub mixer for freestanding installation with hand shower set - Brushed Platinum

TARA

25 943 882 Product version up to 5/27/2021

Spare parts list

Number	Item Number	Designation	Number of units	Lead time
9	90 23 01 024 00-06	aerator	1.00	10
1	04 20 88 052 00-06	handle	2.00	10
4	90 12 12 007 00-06	base	2.00	10
10	90 21 10 011 00 90	diverter	1.00	2
23	04 28 22 009 20-06	connection	2.00	10
13	28 019 979-06	Hand shower - Brushed Platinum	1.00	60
14	90 30 02 072 00-06	Metal shower hose 1/2" x 3/8" x 49-1/4" - Brushed Platinum	1.00	10
16	04 28 10 029 01-06	holder	1.00	10
2	04 18 20 022 00-06	angle	2.00	10
27	09 30 11 130-07	connection	2.00	30
29	09 24 03 080 90	extension	2.00	2
20	09 14 10 041 90	seal	2.00	2
7	90 90 03 130 00 90	top	1.00	2
37	09 21 02 143-06	sleeve	1.00	10
17	09 29 05 021 20 90	nipple	2.00	2
33	09 28 10 028-06	sleeve	1.00	10
26	04 23 10 023 00 90	fixing set	2.00	2
18	09 14 10 112 90	seal	4.00	2
32	90 18 20 025 00-06	diverter	1.00	-
Spare part can no longer be ordered, please order the replacement item				
21	09 27 89 025-06	rosette	2.00	10
31	90 15 01 005 00 90	insert	1.00	2
25	09 24 03 094-07	nipple	2.00	30
22	09 23 30 040-07	nut	2.00	30
36	09 23 01 131 90	back-flow preventer	1.00	2
3	09 20 88 052-06	handle	2.00	10
11	04 24 04 189 00-06	nipple	1.00	10
24	09 14 10 081 90	seal	2.00	2
8	90 28 22 222 00-06	spout	1.00	10
35	09 24 03 121-06	nipple	1.00	10
28	09 24 03 081 10 90	extension	4.00	2
30	90 90 03 131 00 90	top	1.00	2
6	90 30 30 075 00 90	screw	2.00	2
38	90 14 20 026 00 90	seal	1.00	2
5	90 30 11 029 00 90	disc	2.00	2
34	90 14 10 032 00 90	seal	2.00	2
19	90 14 10 055 00 90	seal	4.00	2
12	90 14 20 002 00 90	seal	1.00	2
15	90 18 40 035 00 90	sleeve	1.00	2