

Shower riser without hand shower - Chrome

26 024 661 Product version from 10/1/2023



- Swiveling 180°
- Rainshower
- Rain shower with descaling system
- Rain shower water flow rate limited to max. 1.8 gpm (at 3 bar)
- Function from: 1.7 gpm
- Rain shower diameter 11-3/4"
- Showerhead holder with rosette, Ø 3-1/8"
- Metal shower hose 49-1/4" with anti-twist device
- Height from center of faucet to top of shower arm 89-3/4"
- Height from center of faucet to bottom of rainhead 76-3/8"
- Shower head/ hand shower integrated diverter
- Flanges Ø 2-1/8"
- Pipe diameter 3/4"
- with drip prevention
- This product reduces water consumption by 28% (compared to requirements of EPA Act '92)
- This product contributes to meeting the requirements of the LEED® Green Building Rating
- This product can help a building meet the requirements of Green Building Rating Systems, e.g. LEED®, BREEAM®, DGNB

Recommended spacing between bottom edge of shower riser and floor 3-5/8".

NOTE: Local building codes may require the use of an anti-scald device. Please refer to remote pressure balance valve (35 914 970 90) Internal backflow preventer.

NOTE: Hand shower sold separately. Please see hand shower options under the miscellaneous articles section of each series.

Rough to be connected to lower wall bracket

Recommended spacing between bottom edge of shower riser and floor 3-5/8".

NOTE: Local building codes may require the use of an anti-scald device. Please refer to remote pressure balance valve (35 914 970 90)

Internal backflow preventer.

NOTE: Hand shower sold separately. Please see hand shower options under the miscellaneous articles section of each series.


Rough to be connected to lower wall bracket

| | | |
|---|--------------------------------|--------------------|
|  | Chrome | 26 024 661-00 0010 |
|  | Brushed Platinum | 26 024 661-06 0010 |
|  | Platinum | 26 024 661-08 0010 |
|  | Dark Chrome | 26 024 661-19 0010 |
|  | Light gold | 26 024 661-26 0010 |
|  | Brushed Light Gold | 26 024 661-27 0010 |
|  | Brushed Durabronze (23kt Gold) | 26 024 661-28 0010 |
|  | Matte Black | 26 024 661-33 0010 |
|  | Brushed Bronze | 26 024 661-42 0010 |
|  | Brushed Champagne (22kt Gold) | 26 024 661-46 0010 |
|  | Champagne (22kt Gold) | 26 024 661-47 0010 |
|  | Brushed Chrome | 26 024 661-93 0010 |
|  | Brushed Dark Platinum | 26 024 661-99 0010 |


Shower riser without hand shower - Chrome

26 024 661 Product version from 10/1/2023


Required article

| | | |
|---|--|-----------------------|
|  | Wall mounting - •Max. rough in depth " •Min. rough in depth " | 35 003 970-90 0010 |
|---|--|-----------------------|


Required article

| | | |
|---|--|-----------------------|
|  | Hand shower FlowReduce - Chrome | 28 016 979-00 0010 |
|---|--|-----------------------|

Required article

| | | |
|---|--|-----------------------|
|  | Hand shower FlowReduce - Chrome | 28 012 979-00 0010 |
|---|--|-----------------------|

Required article

| | | |
|---|--|-----------------------|
|  | Hand shower FlowReduce - Chrome | 28 018 979-00 0010 |
|---|--|-----------------------|

Required article

| | | |
|---|---|-----------------------|
|  | SERIES-VARIOUS Hand shower FlowReduce - Chrome | 28 027 979-00 0010 |
|---|---|-----------------------|

Required article

| | | |
|---|---|-----------------------|
|  | SERIES-VARIOUS Hand shower FlowReduce - Chrome | 28 029 979-00 0010 |
|---|---|-----------------------|

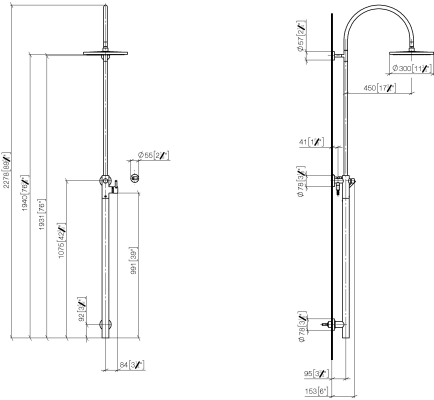
Required article

| | | |
|---|---|-----------------------|
|  | SERIES-VARIOUS Hand shower FlowReduce - Chrome | 28 025 979-00 0010 |
|---|---|-----------------------|

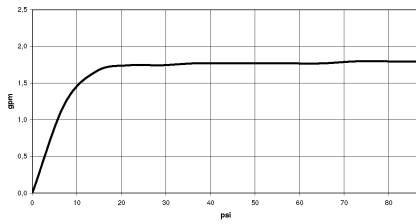
Shower riser without hand shower - Chrome

26 024 661 Product version from 10/1/2023

mm [inch]

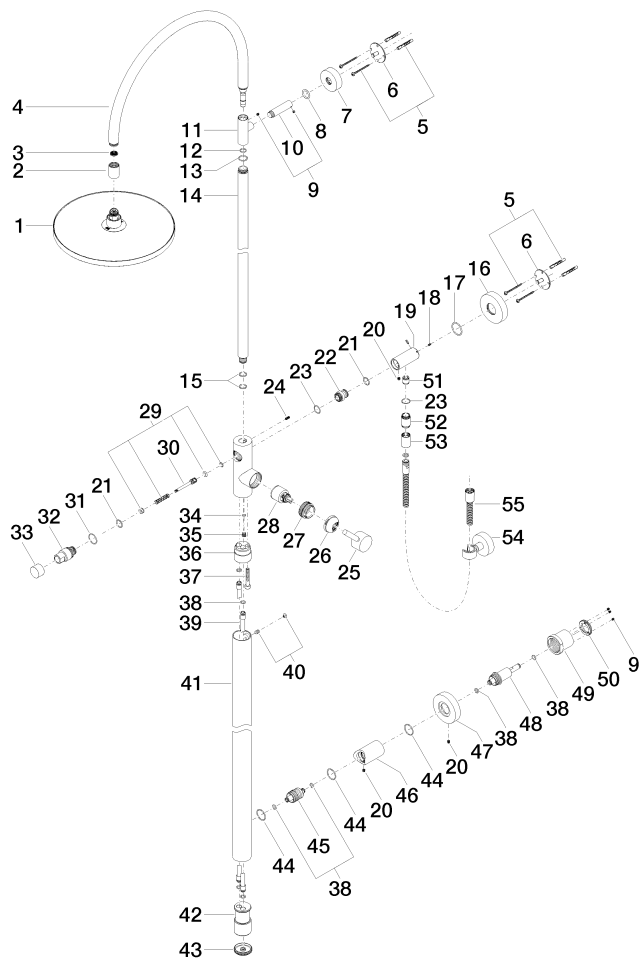


Flow rate chart



Shower riser without hand shower - Chrome

26 024 661 Product version from 10/1/2023



Spare parts list

| Number | Item Number | Designation | Number of units | Lead time |
|--------|--------------------|-------------|-----------------|-----------|
| 1 | 04 12 05 091 10-00 | shower | 1 | 10 |
| 2 | 09 24 03 163 20-00 | adaptor | 1 | 10 |
| 3 | 09 23 01 039 90 | sieve | 1 | 2 |
| 4 | 90 28 22 082 00-00 | spout | 1 | 10 |
| 5 | 05 30 31 025 00 90 | fixing set | 2 | 2 |
| 6 | 09 30 11 103 90 | holder | 2 | 2 |
| 7 | 09 27 89 000-00 | rosette | 1 | 10 |
| 8 | 09 14 10 006 90 | seal | 1 | 2 |
| 9 | 90 31 11 030 00 90 | pin | 1 | 2 |
| 10 | 09 11 10 083-00 | connection | 1 | 10 |
| 11 | 09 17 11 049-00 | holder | 1 | 10 |
| 12 | 90 14 10 077 00 90 | seal | 1 | 2 |
| 13 | 09 14 10 122 90 | seal | 1 | 2 |
| 14 | 04 28 22 134 20-00 | pipe | 1 | 10 |
| 15 | 90 14 10 055 00 90 | seal | 2 | 2 |
| 16 | 09 27 88 010-00 | rosette | 1 | 10 |
| 17 | 09 14 10 101 90 | seal | 1 | 2 |
| 18 | 09 31 11 061 90 | pin | 2 | 2 |
| 19 | 09 11 10 081 20-00 | connection | 1 | 10 |
| 20 | 09 31 11 049 90 | pin | 3 | 2 |
| 21 | 90 14 10 010 00 90 | seal | 2 | 2 |



Shower riser without hand shower - Chrome

26 024 661 Product version from 10/1/2023

| | | | | |
|----|--------------------|--|---|----|
| 22 | 09 24 03 162 20 90 | nipple | 1 | 2 |
| 23 | 90 14 10 032 00 90 | seal | 2 | 2 |
| 24 | 09 31 11 024 90 | pin | 1 | 2 |
| 25 | 90 20 66 017 00-00 | handle | 1 | 10 |
| 26 | 09 28 30 042-00 | cover | 1 | 10 |
| 27 | 09 24 04 341 90 | nut | 1 | 60 |
| 28 | 90 15 05 064 00 90 | cartridge | 1 | 2 |
| 29 | 90 16 02 023 00 90 | spring | 1 | 2 |
| 30 | 09 31 09 102 20-00 | pull-rod | 1 | 10 |
| 31 | 09 14 10 112 90 | seal | 1 | 2 |
| 32 | 09 21 34 081 20-00 | nipple | 1 | 10 |
| 33 | 09 20 88 002-00 | handle | 1 | 10 |
| 34 | 09 14 10 132 90 | seal | 1 | 2 |
| 35 | 09 31 20 027 10-00 | plug | 1 | 10 |
| 36 | 09 24 03 149 10-00 | adaptor | 1 | 10 |
| 37 | 09 30 30 111 90 | screw | 1 | 2 |
| 38 | 09 14 10 139 90 | seal | 6 | 2 |
| 39 | 04 28 22 038 00 90 | connection | 2 | 2 |
| 40 | 04 31 20 034 00 90 | plug | 1 | 2 |
| 41 | 04 28 22 034 00-00 | pipe | 1 | 10 |
| 42 | 09 17 11 024 20 90 | distributor | 1 | 60 |
| 43 | 09 21 02 132-00 | lid | 1 | 10 |
| 44 | 90 14 10 063 00 90 | seal | 3 | 2 |
| 45 | 09 24 04 215 20 90 | nipple | 1 | 2 |
| 46 | 09 11 10 080 20-00 | connection | 1 | 10 |
| 47 | 09 27 88 008-00 | rosette | 1 | 10 |
| 48 | 09 24 04 210 10 90 | nipple | 1 | 2 |
| 49 | 09 21 02 128 90 | sleeve | 1 | 2 |
| 50 | 09 24 77 002 90 | nut | 1 | 2 |
| 51 | 90 23 01 141 00 90 | back-flow preventer | 1 | 2 |
| 52 | 09 24 03 115 20-00 | nipple | 1 | 10 |
| 53 | 90 21 02 069 00-00 | cover | 1 | 10 |
| 54 | 28 050 920-00 | holder | 1 | 60 |
| 55 | 90 30 02 072 00-00 | Metal shower hose 1/2" x 3/8" x 49-1/4" - Chrome | 1 | 10 |