

Shower riser without hand shower - Light gold

SERIES SPECIFIC

26 024 661 Product version from 10/1/2023



- Swiveling 180°
- Rainshower
- Rain shower with descaling system
- Rain shower water flow rate limited to max. 1.8 gpm (at 3 bar)
- Function from: 1.7 gpm
- Rain shower diameter 11-3/4"
- Showerhead holder with rosette, Ø 3-1/8"
- Metal shower hose 49-1/4" with anti-twist device
- Height from center of faucet to top of shower arm 89-3/4"
- Height from center of faucet to bottom of rainhead 76-3/8"
- Shower head/ hand shower integrated diverter
- Flanges Ø 2-1/8"
- Pipe diameter 3/4"
- with drip prevention
- This product reduces water consumption by 28% (compared to requirements of EPA Act '92)
- This product contributes to meeting the requirements of the LEED® Green Building Rating
- This product can help a building meet the requirements of Green Building Rating Systems, e.g. LEED®, BREEAM®, DGNB

Recommended spacing between bottom edge of shower riser and floor 3-5/8".

NOTE: Local building codes may require the use of an anti-scald device. Please refer to remote pressure balance valve (35 914 970 90)

Internal backflow preventer.

NOTE: Hand shower sold separately. Please see hand shower options under the miscellaneous articles section of each series.

Rough to be connected to lower wall bracket

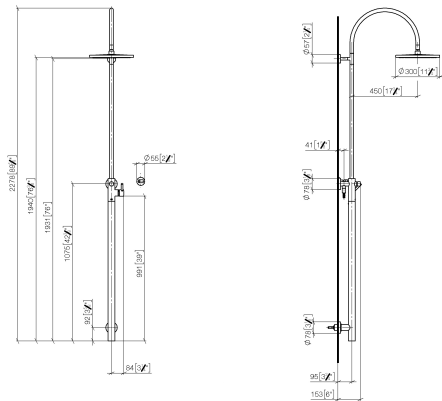
| | | |
|---|--------------------------------|--------------------|
|  | Light gold | 26 024 661-26 0010 |
|  | Chrome | 26 024 661-00 0010 |
|  | Brushed Platinum | 26 024 661-06 0010 |
|  | Platinum | 26 024 661-08 0010 |
|  | Dark Chrome | 26 024 661-19 0010 |
|  | Brushed Light Gold | 26 024 661-27 0010 |
|  | Brushed Durabronze (23kt Gold) | 26 024 661-28 0010 |
|  | Matte Black | 26 024 661-33 0010 |
|  | Brushed Bronze | 26 024 661-42 0010 |
|  | Brushed Champagne (22kt Gold) | 26 024 661-46 0010 |
|  | Champagne (22kt Gold) | 26 024 661-47 0010 |
|  | Brushed Chrome | 26 024 661-93 0010 |
|  | Brushed Dark Platinum | 26 024 661-99 0010 |

Shower riser without hand shower - Light gold

SERIES SPECIFIC

26 024 661 Product version from 10/1/2023

mm [inch]

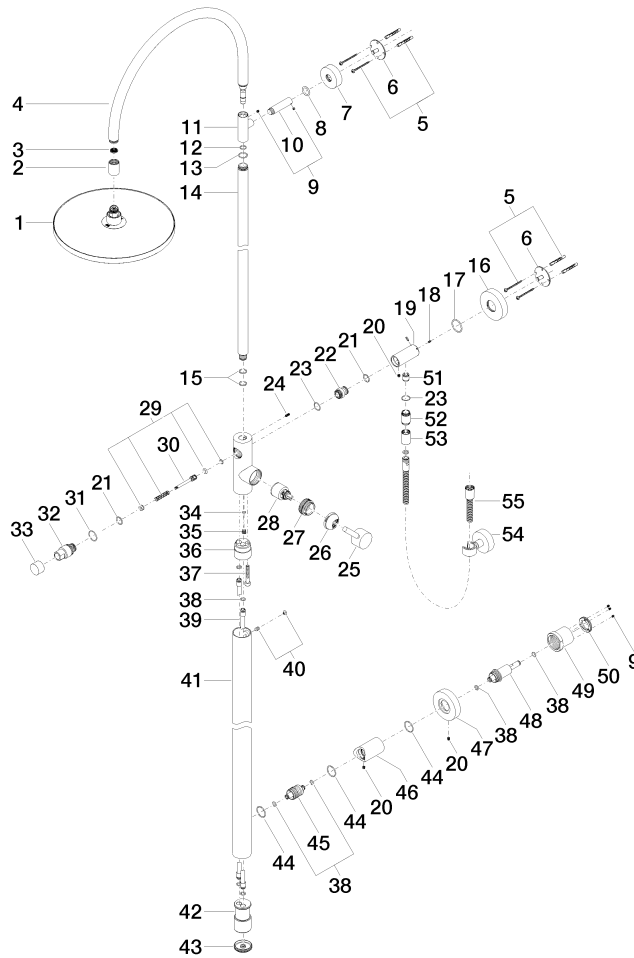


Shower riser without hand shower - Light gold

SERIES SPECIFIC

26 024 661 Product version from 10/1/2023

Parts for other finishes can be found here: [Chrome](#)



Spare parts list

| Number | Item Number | Designation | Number of units | Lead time |
|--|--------------------|-------------|-----------------|-----------|
| 30 | 09 31 09 102 20-26 | pull-rod | 1.00 | - |
| Spare part can no longer be ordered, please order the replacement item | | | | |
| 24 | 09 31 11 024 90 | pin | 1.00 | 2 |
| 41 | 04 28 22 034 00-26 | pipe | 1.00 | 60 |
| 37 | 09 30 30 111 90 | screw | 1.00 | 2 |
| 9 | 90 31 11 030 00 90 | pin | 1.00 | 2 |
| 40 | 04 31 20 034 00 90 | plug | 1.00 | 2 |
| 36 | 09 24 03 149 10-26 | adaptor | 1.00 | - |
| Spare part can no longer be ordered, please order the replacement item | | | | |
| 18 | 09 31 11 061 90 | pin | 2.00 | 2 |
| 53 | 90 21 02 069 00-26 | cover | 1.00 | 30 |
| 43 | 09 21 02 132-26 | lid | 1.00 | 60 |
| 12 | 90 14 10 077 00 90 | seal | 1.00 | 2 |
| 27 | 09 24 04 341 90 | nut | 1.00 | 60 |
| 13 | 09 14 10 122 90 | seal | 1.00 | 2 |
| 54 | 28 050 920-26 | holder | 1.00 | - |
| Spare part can no longer be ordered, please order the replacement item | | | | |
| 14 | 04 28 22 134 20-26 | pipe | 1.00 | 60 |

Shower riser without hand shower - Light gold

SERIES SPECIFIC

26 024 661 Product version from 10/1/2023

| | | | | |
|----|--------------------|--|------|----|
| 11 | 09 17 11 049-26 | holder | 1.00 | 60 |
| 47 | 09 27 88 008-26 | rosette | 1.00 | 60 |
| 46 | 09 11 10 080 20-26 | connection | 1.00 | 60 |
| 15 | 90 14 10 055 00 90 | seal | 2.00 | 2 |
| 33 | 09 20 88 002-26 | handle | 1.00 | 60 |
| 51 | 90 23 01 141 00 90 | back-flow preventer | 1.00 | 2 |
| 42 | 09 17 11 024 20 90 | distributor | 1.00 | 60 |
| 8 | 09 14 10 006 90 | seal | 1.00 | 2 |
| 16 | 09 27 88 010-26 | rosette | 1.00 | 60 |
| 21 | 90 14 10 010 00 90 | seal | 2.00 | 2 |
| 31 | 09 14 10 112 90 | seal | 1.00 | 2 |
| 29 | 90 16 02 023 00 90 | spring | 1.00 | 2 |
| 28 | 90 15 05 064 00 90 | cartridge | 1.00 | 2 |
| 32 | 09 21 34 081 20-26 | nipple | 1.00 | 60 |
| 49 | 09 21 02 128 90 | sleeve | 1.00 | 2 |
| 25 | 90 20 66 017 00-26 | handle | 1.00 | 30 |
| 5 | 05 30 31 025 00 90 | fixing set | 2.00 | 2 |
| 38 | 09 14 10 139 90 | seal | 6.00 | 2 |
| 7 | 09 27 89 000-26 | rosette | 1.00 | 60 |
| 52 | 09 24 03 115 20-26 | nipple | 1.00 | 60 |
| 3 | 09 23 01 039 90 | sieve | 1.00 | 2 |
| 19 | 09 11 10 081 20-26 | connection | 1.00 | 60 |
| 1 | 04 12 05 091 10-26 | shower | 1.00 | 60 |
| 34 | 09 14 10 132 90 | seal | 1.00 | 2 |
| 35 | 09 31 20 027 10-00 | plug | 1.00 | 10 |
| 23 | 90 14 10 032 00 90 | seal | 2.00 | 2 |
| 55 | 90 30 02 072 00-26 | Metal shower hose 1/2" x 3/8" x 49-1/4" - Light gold | 1.00 | 30 |
| 10 | 09 11 10 083-26 | connection | 1.00 | 60 |
| 20 | 09 31 11 049 90 | pin | 3.00 | 2 |
| 26 | 09 28 30 042-26 | cover | 1.00 | 60 |
| 45 | 09 24 04 215 20 90 | nipple | 1.00 | 2 |
| 4 | 90 28 22 082 00-26 | spout | 1.00 | 30 |
| 17 | 09 14 10 101 90 | seal | 1.00 | 2 |
| 44 | 90 14 10 063 00 90 | seal | 3.00 | 2 |
| 50 | 09 24 77 002 90 | nut | 1.00 | 2 |
| 48 | 09 24 04 210 10 90 | nipple | 1.00 | 2 |
| 22 | 09 24 03 162 20 90 | nipple | 1.00 | 2 |
| 39 | 04 28 22 038 00 90 | connection | 2.00 | 2 |
| 6 | 09 30 11 103 90 | holder | 2.00 | 2 |
| 2 | 09 24 03 163 20-26 | adaptor | 1.00 | 60 |