

MADISON Slide bar set without hand shower - Platinum
MADISON

26 413 370



- Shower hose connection 1/2"
- Metal shower hose 68-7/8" with anti-twist device
- Slide bar


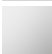




Technical dimensions:

- Center to center 33-1/2"
- Flanges, diameter 2-3/8"
- Pipe diameter 3/4"


Notes:

This article does not include a hand shower!


NOTE: Hand shower sold separately. Please see hand shower options under the miscellaneous articles section of each series.

	Platinum	26 413 370-08
	Chrome	26 413 370-00
	Brushed Platinum	26 413 370-06
	Durabrass (23kt Gold)	26 413 370-09
	Brushed Durabrass (23kt Gold)	26 413 370-28
	Brushed Dark Platinum	26 413 370-99

Recommended article

	Rough-in adapter - •Please order rough-in adapter 35 080 970-90 0010 if installed with wall elbow.	35 080 970-90 0010
---	--	--------------------


Required article

	MADISON Metal hand shower with porcelain (white) handle FlowReduce - Platinum	28 002 970-08 0010
---	--	--------------------

Recommended article

	MADISON Wall elbow - Platinum	28 450 370-08
---	--------------------------------------	---------------

Required article

	MADISON Hand shower FlowReduce - Platinum •Ø 3-3/4" •Hand shower see page {PAGE} •3-way adjustable: COMPACT RAIN, COMPACT SOFT FLOW, COMPACT AQUAPRESSURE FLOW, flow rate max. gpm (at 3 bar)	28 002 978-08 0010
---	---	--------------------

26 413 370



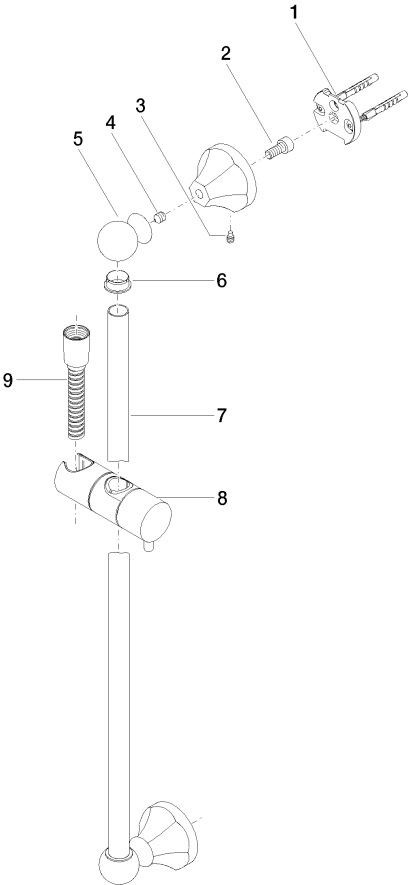
Codes & Standards

ASME A112.18.1	cUPC	Scottish Water Byelaws	UK Water Supply Regulations
----------------	------	---------------------------	--------------------------------

Certificates and sustainability

WRAS_2009	IAPMO_4976
-----------	------------

26 413 370



Spare parts list

Number	Item Number	Designation	Number of units	Lead time
8	12 580 970-08	Slider - Platinum	1.00	40
2	09 30 30 048 90	screw	2.00	2
7	08 28 22 596-08	pipe	1.00	40
9	28 204 970-08	Metal shower hose 1/2" x 1/2" x 68-7/8" - Platinum	1.00	40
1	05 17 97 507 00 90	fixing set	2.00	2
3	09 31 11 140 90	pin	2.00	60
6	09 18 40 009 90	sleeve	2.00	2
4	09 31 11 002 90	pin	2.00	2
5	09 21 40 020-08	connection	2.00	60