

TARA Slide bar set without hand shower - Platinum

TARA

26 413 892 Product version from 4/1/2024




- Slide bar
- Pipe diameter 3/4"
- Flanges, diameter 2-1/8"
- Center to center 31-1/2"
- Metal shower hose 68-7/8" with anti-twist device
- Shower hose connection 3/8"

This article does not include a hand shower!


NOTE: Hand shower sold separately. Please see hand shower options under the miscellaneous articles section of each series.

	Platinum	26 413 892-08
	Chrome	26 413 892-00
	Brushed Platinum	26 413 892-06
	Dark Chrome	26 413 892-19
	Brushed Durabronze (23kt Gold)	26 413 892-28
	Matte Black	26 413 892-33
	Brushed Bronze	26 413 892-42
	Brushed Champagne (22kt Gold)	26 413 892-46
	Champagne (22kt Gold)	26 413 892-47
	Brushed Chrome	26 413 892-93
	Brushed Dark Platinum	26 413 892-99

Recommended article

	Rough-in adapter -	35 080 970-90
	•Please order rough-in adapter 35 080 970-90 0010 if installed with wall elbow.	0010

Required article

	Hand shower FlowReduce - Platinum	28 012 979-08 0010
---	--	--------------------


Required article

	Hand shower FlowReduce - Platinum	28 018 979-08 0010
---	--	--------------------

Required article

	SERIES-VARIOUS Hand shower FlowReduce - Platinum	28 027 979-08 0010
---	---	--------------------

Recommended article

	Wall elbow - Platinum	28 450 625-08
---	------------------------------	---------------

Required article

	Hand shower FlowReduce - Platinum	28 016 979-08 0010
---	--	--------------------

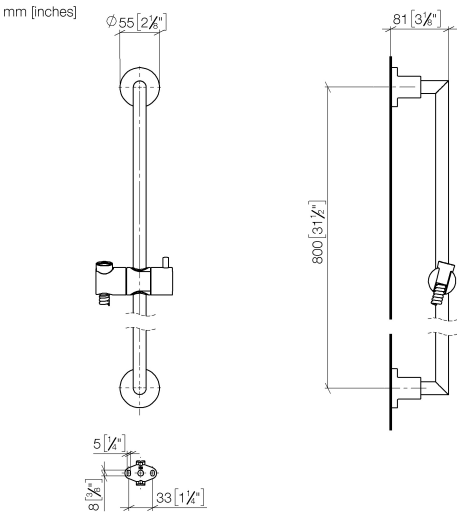
Required article

	SERIES-VARIOUS Hand shower FlowReduce - Platinum	28 025 979-08 0010
---	---	--------------------

Required article

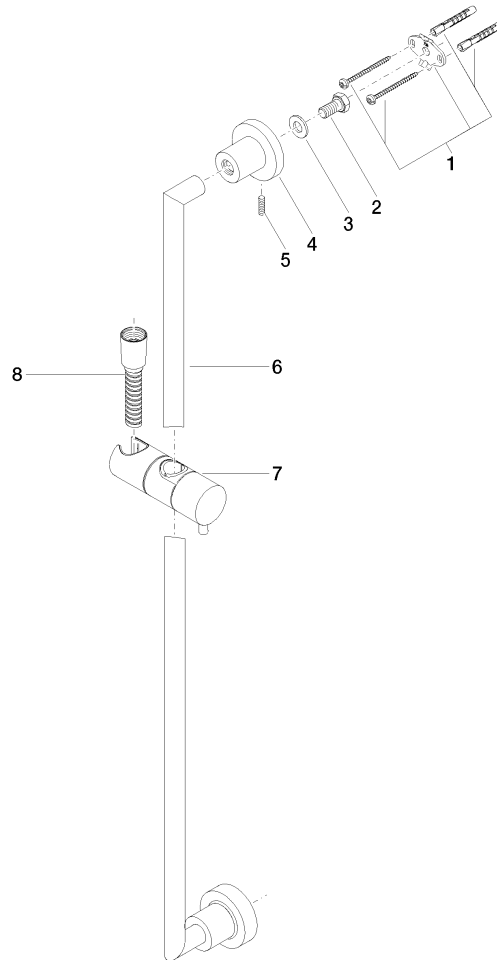
	SERIES-VARIOUS Hand shower FlowReduce - Platinum	28 029 979-08 0010
---	---	--------------------

26 413 892 Product version from 4/1/2024



Codes & Standards			
ASME A112.18.1	cUPC	Scottish Water Byelaws	UK Water Supply Regulations
XP P 41-280			

Certificates and sustainability		
WRAS_2009	ACS_20 ACC LY	IAPMO_4976



Spare parts list

Number	Item Number	Designation	Number of units	Lead time
7	12 580 970-08	Slider - Platinum	1.00	40
5	04 31 11 113 00 90	pin	2.00	2
4	08 17 89 505-08	holder	2.00	40
8	28 322 970-08	Metal shower hose 1/2" x 3/8" x 68-7/8" - Platinum	1.00	40
3	09 30 11 046 90	disc	2.00	2
1	05 17 20 739 00 90	fixing set	2.00	2
2	09 30 30 071 90	screw	2.00	2
6	05 28 22 590 00-08	bar	1.00	40