

Slide bar set without hand shower - Brushed Platinum

SERIES-VARIOUS

26 413 979 Product version from 10/1/2023




- COMPACT RAIN, flow rate max. gpm (at 3 bar)
- Center to center 33-5/8"
- Shower hose connection 3/8"
- Metal shower hose 68-7/8" with anti-twist device
- Slide bar
- Pipe diameter 3/4"
- Internal back flow preventer

This article does not include a hand shower!


NOTE: Hand shower sold separately. Please see hand shower options under the miscellaneous articles section of each series.

	Brushed Platinum	26 413 979-06
	Chrome	26 413 979-00
	Platinum	26 413 979-08
	Dark Chrome	26 413 979-19
	Light gold	26 413 979-26
	Brushed Light Gold	26 413 979-27
	Brushed Durabronze (23kt Gold)	26 413 979-28
	Matte Black	26 413 979-33
	Brushed Bronze	26 413 979-42
	Brushed Champagne (22kt Gold)	26 413 979-46
	Champagne (22kt Gold)	26 413 979-47
	Brushed Chrome	26 413 979-93
	Brushed Dark Platinum	26 413 979-99


Recommended article

	Rough-in adapter - •Please order rough-in adapter 35 080 970-90 0010 if installed with wall elbow.	35 080 970-90 0010
---	--	--------------------

Recommended article

	LISSÉ Wall elbow - Brushed Platinum	28 450 845-06
---	--	---------------

Required article

	Hand shower FlowReduce - Brushed Platinum	28 016 979-06 0010
---	--	--------------------

Required article

	SERIES-VARIOUS Hand shower FlowReduce - Brushed Platinum	28 025 979-06 0010
---	---	--------------------

Recommended article

	Wall elbow - Brushed Platinum	28 450 980-06
---	--------------------------------------	---------------

Required article

	Hand shower FlowReduce - Brushed Platinum	28 012 979-06 0010
---	--	--------------------

Required article

	Hand shower FlowReduce - Brushed Platinum	28 018 979-06 0010
---	--	--------------------

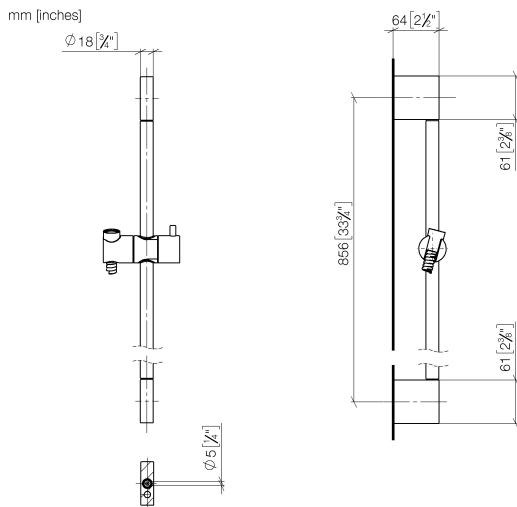
Required article

	SERIES-VARIOUS Hand shower FlowReduce - Brushed Platinum	28 029 979-06 0010
---	---	--------------------

Slide bar set without hand shower - Brushed Platinum

SERIES-VARIOUS

26 413 979 Product version from 10/1/2023



Codes & Standards

ASME A112.18.1

cUPC

Scottish Water Byelaws

UK Water Supply Regulations

XP P 41-280

Certificates and sustainability

WRAS_2009

ACS_20 ACC LY

IAPMO_4976



Spare parts list

Number	Item Number	Designation	Number of units	Lead time
7	12 580 970-06	Slider - Brushed Platinum	1.00	10
1	05 17 20 726 02 90	fixing set	2.00	2
4	04 31 11 113 00 90	pin	2.00	2
2	08 17 20 726 90	holder	2.00	2
8	28 322 970-06	Metal shower hose 1/2" x 3/8" x 68-7/8" - Brushed Platinum	1.00	2
6	90 28 22 597 00-06	holder	1.00	10
3	09 31 11 049 90	pin	2.00	2
5	08 17 97 054-06	holder	2.00	10